



From Systems of Record to Systems of Action

Optimizing Manufacturing, Procurement, Quality,
and the Shopfloor for a Smarter Future

Product Disclaimer

This document outlines QAD's general product direction. It is intended for information purposes only, and may not be incorporated into any contract. It is not a commitment to deliver any material, code or functional capabilities, and should not be relied upon in making purchasing decisions. The development, release, and timing of any features or functional capabilities described for QAD's products remains at the sole discretion of QAD.

Changing The Manufacturing World - Actual Article Headlines

2008

How Cloud Computing Is Changing the World

2013

Big Data Will Change The World

2015

Industry 4.0: how intelligent machines will transform everything we know

2020

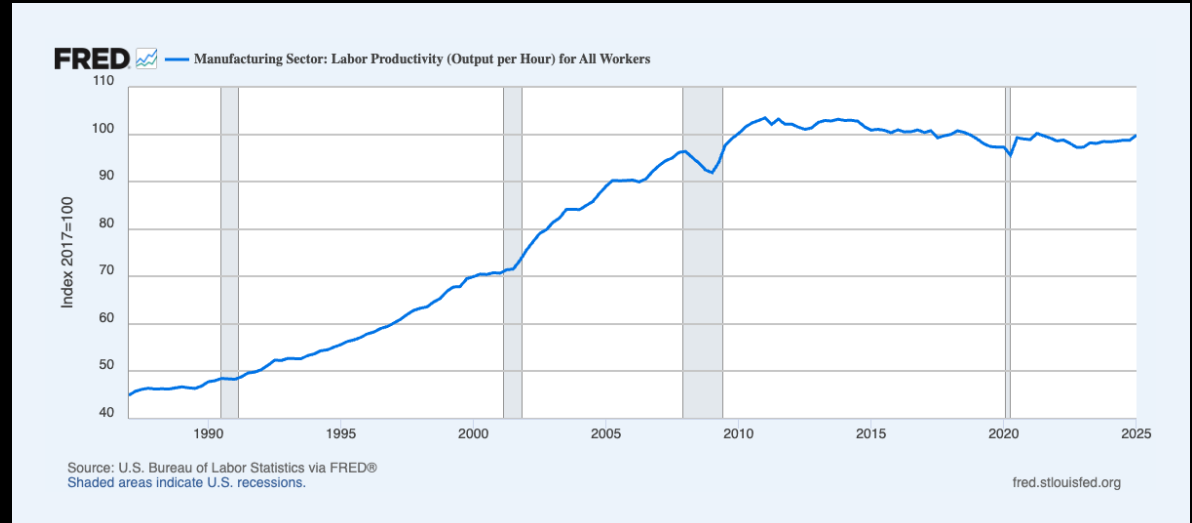
5 Ways RPA is Changing The World As We Know It

Did Technology Change Manufacturing?

Global Supply
Chain Uncertainty

Productivity
Plateau

Rampant AI
Washing



Manufacturing Companies Are Leaking EBIT

- Unplanned Scrap
- Rework
- Days in Inventory (DII)
- Unplanned premium freight
- Overhead Variance
- Overtime
- Wasted Labor time (Labor Variance)
- Asset Utilization
- Parts per Million (PPM)
- Reduction of COGS
- Customer Satisfaction
- Purchasing Savings
- Days Sales Outstanding (DSO)
- Days Payable Outstanding (DPO)
- Tariff Management
- Purchased parts and materials (Price)
- Cost of Quality
- Engineering Changes
- Warranty and Returns
- Manufacturing Cost Variance
- Maintenance Spend Variance
- Manufacturing Efficiencies
- Warehousing Efficiencies
- IT Environment
- Shared Services

How Can We Turn The Tide?

Systems today tell you what happened.

You need to know why it happened, and what actions you should take.

To turn the tide, we need to move from systems of record, to systems of ACTION

4 Themes

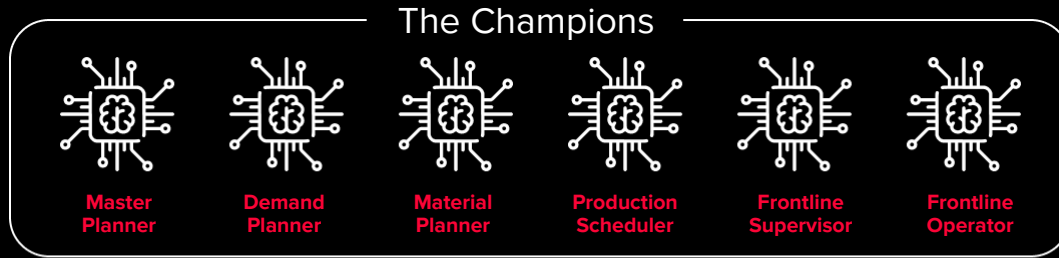
1. Manufacturing: Predictive and Prescriptive Planning
2. Procurement: Building Resilient and Intelligent Supply Chains
3. Quality: The Path to Zero-Defect Manufacturing
4. Workforce: Empowering the Connected Frontline

AI Is Powerful When Data Sources Are Optimized

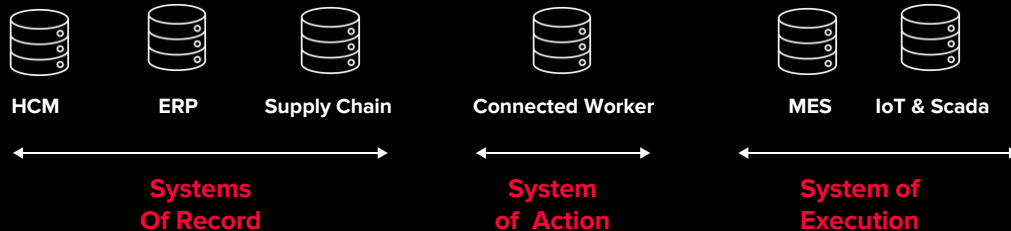


A Curated List of Agentic Capabilities living within Manufacturing Processes

Persona Driven Workflow Orchestration



Siloed Workflows & Vertical AI

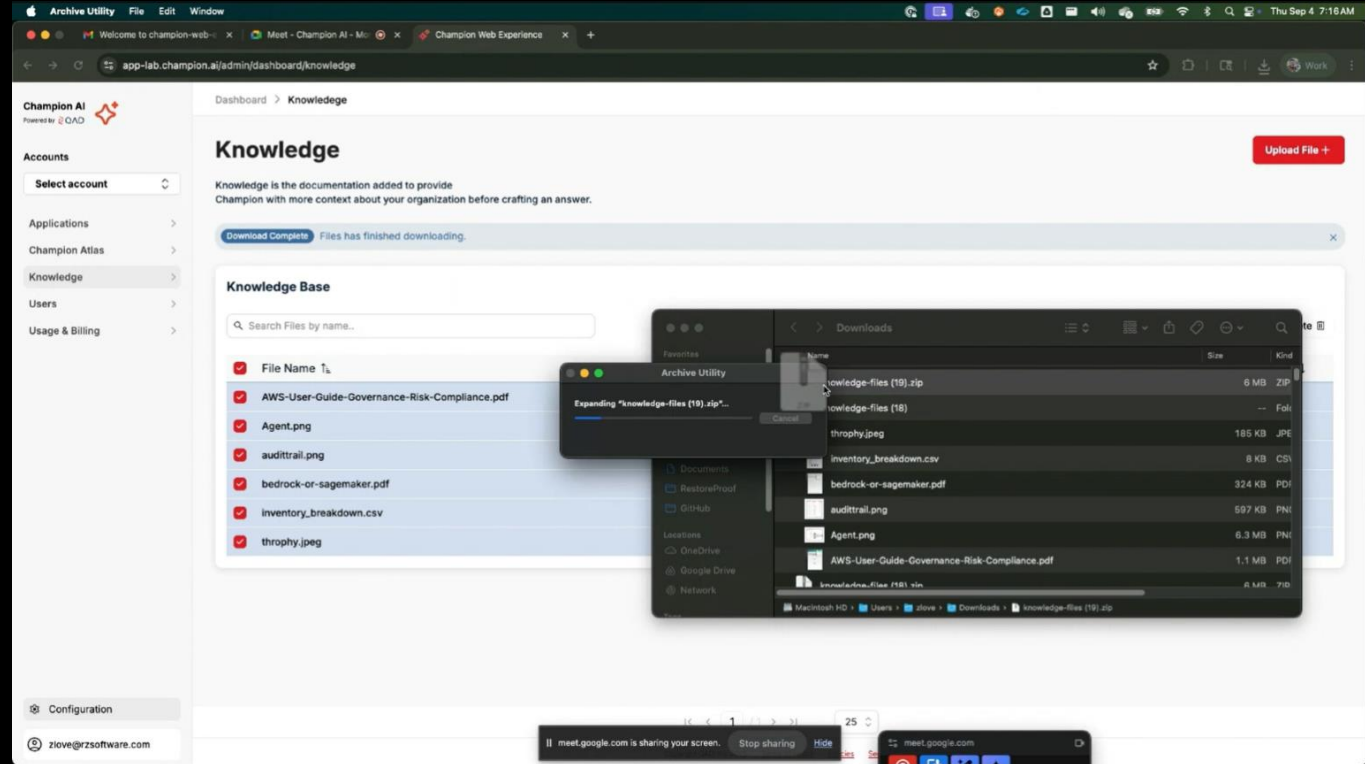


Capabilities:

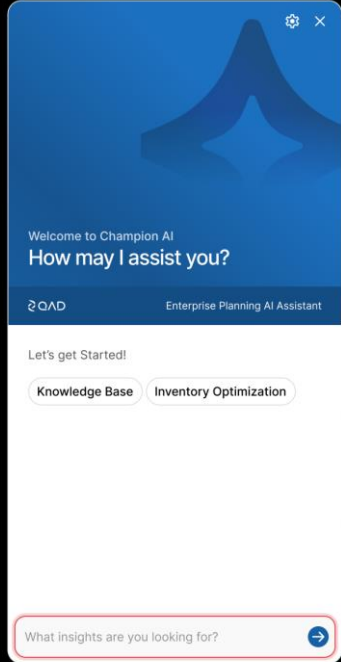
- End-to-end workflow orchestration
- Curated List of Personas matching frontline manufacturing humans
- Seeded with QAD's decades of manufacturing expertise
- Personas create a force multiplier for the human workforce
- Consuming data from any application in the Boomi ecosystem
- Agentic Capabilities (autonomy & memory)
- Powered by LiveJourney

AI Enables Faster Answers to Important Questions

1. HR Policies
1. Internal Projects
1. Product Design Processes
1. Manufacturing Processes



AI Knowledge Assist



AI assistance through intuitive chat

- Application navigation / help / command
 - How can I delegate my approvals?
 - Where do I assess customer payment adherence?
 - Help me run a supplier performance report

- How Customers Help AI Get Better
 - Feedback Loop (Thumbs up and Down)
 - Voice Interaction for Agentic Tuning

4 Themes

1. **Manufacturing: Predictive and Prescriptive Planning**
2. Procurement: Building Resilient and Intelligent Supply Chains
3. Quality: The Path to Zero-Defect Manufacturing
4. Workforce: Empowering the Connected Frontline

Production Scheduling



GENERAL

- Schedules
- Production
- Capacity
- Inventory
- Plan to Make
- Forecast
- Wheels
- Import

SETUP

- Organization
- Sites
- Materials
- Production Rates
- Changeovers
- Units of Measure

DOCUMENTATION

- Documentation

Site 1000 Schedule

+ Order Configure Export View Wheel View Statistics

Order Count: 215 (overdue: 9)

Committed: 0

Scheduled: 215

Unscheduled: 0

Line Utilization: 82%

Total Changeovers: 63.8 hours

Changeovers: 1.1 h / day

Customer Service: 48,000 Case late

Colors: Type: Sauce × Filter: By Material | All Orders

Order ID	Seq	Status	Material	M. Color	Quantity	Planned Start	Due Date	BOM Availability	Allergens	Sauce	Width group	Height	Actions	
Changeover: Height (104), 3rd shift														
<input type="checkbox"/>	P044400	4.13	scheduled	1051	Al 14	500 Case +/-	Nov 23, 22:50	Nov 25, 00:00	0 alerts.	MLK, EGG, PNT, WHT	Alfredo Sauce	Narrow	Medi	Commit Unschedule ...
<input type="checkbox"/>	P044431	4.13	scheduled	1051	Al 14	500 Case +/-	Nov 23, 23:15	Dec 02, 00:00	0 alerts.	MLK, EGG, PNT, WHT	Alfredo Sauce	Narrow	Medi	Commit Unschedule ...
<input type="checkbox"/>	P044462	4.13	scheduled	1051	Al 14	500 Case +/-	Nov 23, 23:40	Dec 09, 00:00	0 alerts.	MLK, EGG, PNT, WHT	Alfredo Sauce	Narrow	Medi	Commit Unschedule ...
<input type="checkbox"/>	P044493	4.13	scheduled	1051	Al 14	500 Case +/-	Nov 24, 00:05	Dec 16, 00:00	0 alerts.	MLK, EGG, PNT, WHT	Alfredo Sauce	Narrow	Medi	Commit Unschedule ...
Changeover: Sauce (304), 1st shift														
<input type="checkbox"/>	P044393	4.15	scheduled	1039	Al 2	2,000 Case +/-	Nov 24, 01:00	Nov 25, 00:00	lat 1 alert.	MLK, EGG, PNT, WHT	Chicken Grav...	Wide	Medi	Commit Unschedule ...
Changeover: Sauce (304), 1st shift														
<input type="checkbox"/>	P044398	4.14	scheduled	1048	SS 20	7,000 Case +/-	Nov 24, 03:10	Nov 25, 00:00	lat 1 alert.	MLK, EGG, PNT, WHT	Asian Sauce	Medium	High	Commit Unschedule ...
Changeover: Sauce (304), 2nd shift														
<input type="checkbox"/>	P044424	4.15	scheduled	1039	Al 2	2,000 Case +/-	Nov 24, 09:30	Dec 02, 00:00	0 alerts.	MLK, EGG, PNT, WHT	Chicken Grav...	Wide	Medi	Commit Unschedule ...
Changeover: Sauce (304), 2nd shift														
<input type="checkbox"/>	P044399	4.16	scheduled	1050	SS 20	3,000 Case +/-	Nov 24, 11:40	Nov 25, 00:00	0 alerts.	MLK, EGG, PNT, WHT	None	Wide	High	Commit Unschedule ...

Note: 9h 40m: Click to shorten cycle
 Planned Cycle #: Nov 25 00:00, 7 days
 Line Unavailable: Nov 25 00:00 to Nov 27 00:00

Atlas of Champions: Inventory Assist*



Expansion Of SCM Risk Mitigation

DECISION INTELLIGENCE

Navigating Israel-Iran Supply Chain Risks



4 Themes

1. Manufacturing: Predictive and Prescriptive Planning
2. **Procurement: Building Resilient and Intelligent Supply Chains**
3. Quality: The Path to Zero-Defect Manufacturing
4. Workforce: Empowering the Connected Frontline

Productivity Agents: Requisition Creation



Creating and Sending RFQs



Procurement Champion: PO Management



4 Themes

1. Manufacturing: Predictive and Prescriptive Planning
2. Procurement: Building Resilient and Intelligent Supply Chains
- 3. Quality: The Path to Zero-Defect Manufacturing**
4. Workforce: Empowering the Connected Frontline

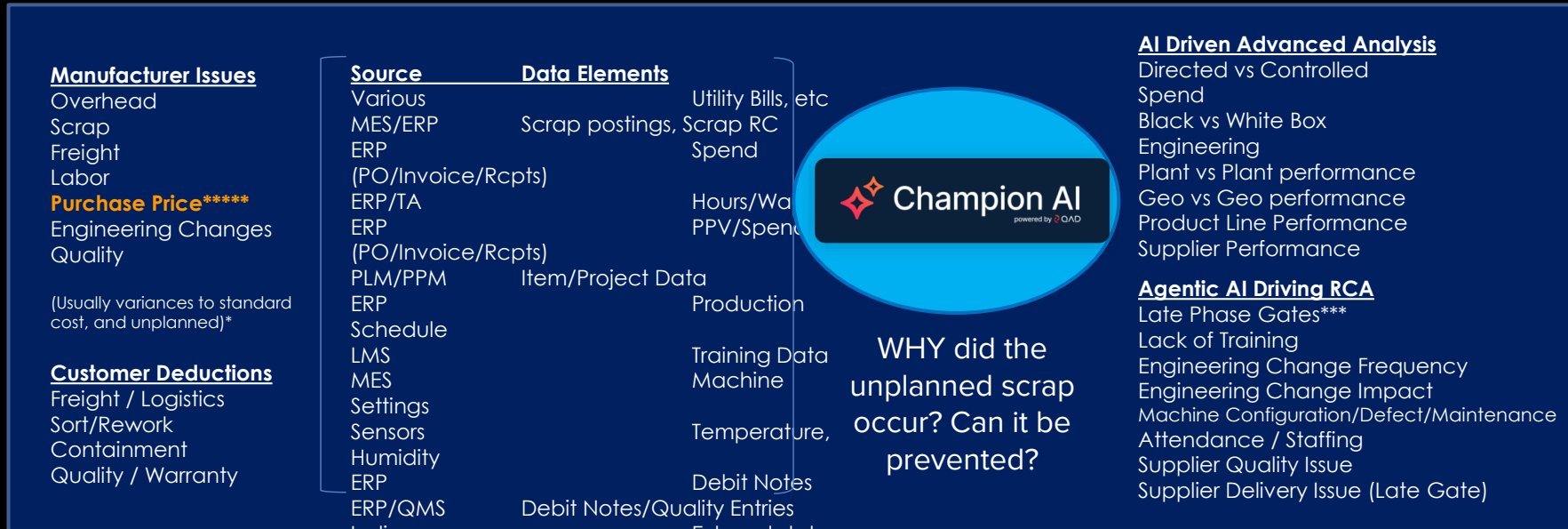
The AI Causality Engine - ROADMAP



A system of record tells you **what** happened.

Adaptive with Champion AI can tell you what happened, and then tell you **why** it happened, tell you **when** it will happen, and could prevent it altogether.

- Consuming data from any application in the Boomi ecosystem



Audit Summary Champion - ROADMAP

The screenshot displays the EQMS (Enterprise Quality Management System) interface. The main window shows the audit details for 'Production Control and Equipment Calibration Audit' (Audit Number: 0000363, Organizer: NWP Superuser, Scheduled Start Date: 3/11/2026 11:00 AM). The audit title is 'Production Control and Equipment Calibration Audit'. The audit checklist includes two items: 'ISO 9001:2015 - 7.1.5: Monitoring and measuring resources' (Checklist Number: 000008) and 'ISO 9001:2015 - 8.5.1: Control of production and service ...' (Checklist Number: 000006). The current scheduling frequency is 'Yearly'.

The 'Champion AI' chat window provides a summary of the audit. The target area is 'Production Control & Equipment Calibration (ISO 9001: 7.1.5 & 8.5.1)'. The overall status is 'Satisfactory with Required Actions'. The audit confirmed that the production floor remains generally compliant with ISO 9001:2015. Key findings and risks include: Calibration Control (Minor NC), Traceability (Minor NC), and Modernization (OFI). Action items and next steps include: Immediate Correction, Root Cause Analysis (RCA), Corrective Action Plan, and Follow-up.

Champion AI

Can you summarize Audit 0000363

11:52 PM

Champion AI

Target Area: Production Control & Equipment Calibration (ISO 9001: 7.1.5 & 8.5.1)

Overall Status: Satisfactory with Required Actions

The audit confirmed that the production floor remains generally compliant with ISO 9001:2015. Core processes including the use of work instructions and the execution of preventative maintenance are well-established and consistently followed by staff. However, **two minor lapses** in operational discipline were identified that require corrective action to prevent potential quality escapes.

Key Findings & Risks

- **Calibration Control (Minor NC):** One digital caliper was found in use past its calibration due date.
 - Risk: Use of unverified equipment could lead to the shipment of parts that do not meet dimensional specifications.
- **Traceability (Minor NC):** Two bins of WIP (Work-in-Progress) parts were found without identification tags.
 - Risk: Unlabeled parts could bypass required inspection stages or be mixed with different batches, leading to rework or scrap.
- **Modernization (OFI):** A transition from paper-based to digital work instructions is recommended to improve document control and cleanliness at workstations.

Action Items & Next Steps

1. **Immediate Correction:** The expired caliper has been removed from service, and the two WIP bins have been quarantined for retrospective inspection.
2. **Root Cause Analysis (RCA):** The Production and Quality leads must determine why the "pre-shift tool check" and "traveler verification" processes failed in these instances days.
3. **Corrective Action Plan:** A formal response for the two minor NCs is due within **14 days**.
4. **Follow-up:** A verification walkthrough will be conducted in 30days to ensure the new controls are effective.

Access Audit in EQMS

What insights are you looking for ?

4 Themes

1. Manufacturing: Predictive and Prescriptive Planning
2. Procurement: Building Resilient and Intelligent Supply Chains
3. Quality: The Path to Zero-Defect Manufacturing
4. **Workforce: Empowering the Connected Frontline**

Optimization Agents: Knowledge Assist

The screenshot displays a mobile application interface for an industrial operations dashboard. The top navigation bar includes the time '06:15 AM Fri Sep 12', the status 'Production', and various utility icons. The main content area is divided into several sections:

- Problems:** A sidebar on the left lists various operational categories like Problems, Quality, Counts, Sense, Maintenance, and Activities.
- Line Information:** Shows 'Sweet Tooth - Harrisburg Line 20' with a 'Line Active' status and '1st Shift Started: 11/04/2024 06:00'.
- OEE (Overall Equipment Effectiveness):** A large gauge shows '74.6%' with a '-5.4%' change from a 'Target 80.0%'. Below it are metrics for 'Avl 82.5%', 'Perf 92.3%', and 'Qual 98.0%'.
- Run Counts:** A section for 'Coconut Dreams' (ID: 688753) shows '73 / 50,000' units produced with a 'Tmax 7.7/min'.
- Problems Table:** A table with columns for 'Problem', 'Lost', and 'Impact'. It lists three issues: '6 X Labeler - Skipping Labels' (21 min, 1,542 EA, \$15.33), '5 X Cartoner - Mispick' (11 min, 627 EA, \$1.54), and '1 X Bagger - Film Change' (6 min, 322 EA, \$0.88).
- Line Log:** A chat-style log on the right shows a message from 'Roy Seaman' at 05:52 AM: 'We've had issues with skipping labels and cartoner mispicks. We may need some help from maintenance.'
- Summary:** At the bottom, 'Total impact & loss' is summarized as '38m' and '\$17.79'.
- Bottom Navigation:** A bar with icons for Chats, Activities, Production (highlighted), Quality, Maintenance, and Playback. A 'Message Everyone' button is also present.

Optimization Agents: Process Assist



Champion AI Is The Convergence Of Technology

2008 - How Cloud Computing Is Changing the World -

Cloud Enabled

2013 - Big Data Will Change The World -

LLMs and Data Science Are Key

2015 - Industry 4.0: how intelligent machines will transform everything we know

Machine Sensors and Smart Machines Provide Actionable Data for AI

2020 - 5 Ways RPA is Changing The World As We Know It -

Agents for Actions

Champions: Driving Return on Investment

How Do AI Enabled Productivity Workflows Drive Benefit?

of Screens navigated
*
Time to Navigate screens
*
of objects to be updated

Aggregate All Agentic Productivity Benefit Together

How Does the AI Inventory Optimization Workflow Drive Benefit?

Inventory:
Based on Finished Inventory, WIP, Obsolescence

Maximizes parameters for
Lead Time, Safety Stock, etc

Reduces Inventory Carrying Costs and Stockout Occurrences

How Does AI Stop EBITDA Leakage?

Maximizes Process Efficiency, optimizing FTE requirements, Sourcing Optimization
*

Visibility to Potential quality issues, and enablement of prediction and prevention reduce cost of poor quality

30%

Reduction in Process Cycle Times



8-12%

Improvement in Inventory Carry Costs



75%

Reduction in Stockouts



1-3%

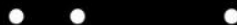
Reduction in COGS





CHAMPIONS **OF** MANUFACTURING

 QAD | **Redzone**





QAD Factbook





\$453m

Revenue
(FY25)

1,700+

Employees

100+

Countries Customers

7000+

Customer Sites

**QAD provides next generation
manufacturing and supply
chain solutions in the cloud.**



QAD Customers by Vertical Focus



Automotive



Consumer Products



Food & Beverage



High Tech



Industrial Products



Life Sciences



QAD Customers by Supply Chain Solution

	Digital Commerce	Digital Supply Chain Planning (DSCP)	Global Trade & Transportation Execution (GTTE)	Supplier Relationship Management (SRM)
Global Customer Base	