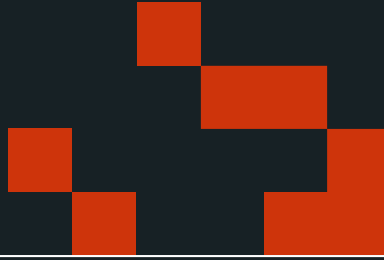


A cluster of orange squares of various sizes is located in the top left corner of the slide.

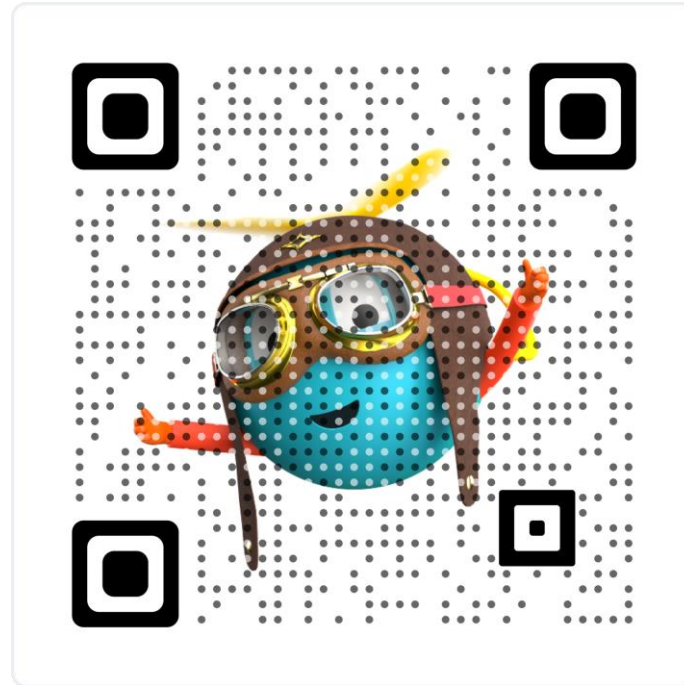
Eliminating Decision Bottlenecks, Accelerating Learning Cycles and Digital kAlzen

© 2026 UiPath, Inc. All rights reserved.

This material is for informational purposes only. No part of it may be reproduced, distributed, or transmitted without the prior written consent of UiPath, Inc. The UiPath word mark, logos, and robots are trademarks or registered trademarks of UiPath, Inc. and its affiliates in the United States and other countries. See TMEP §906.

A cluster of orange squares of various sizes is located in the bottom right corner of the slide.

Learn more



uipath.com/events/ai-in-manufacturing

EXPLICIT DATA: Not the constraint

ANALYTICS: The Dashboard Trap


IMPACT: Where to look, and the fine powder of ineffectiveness

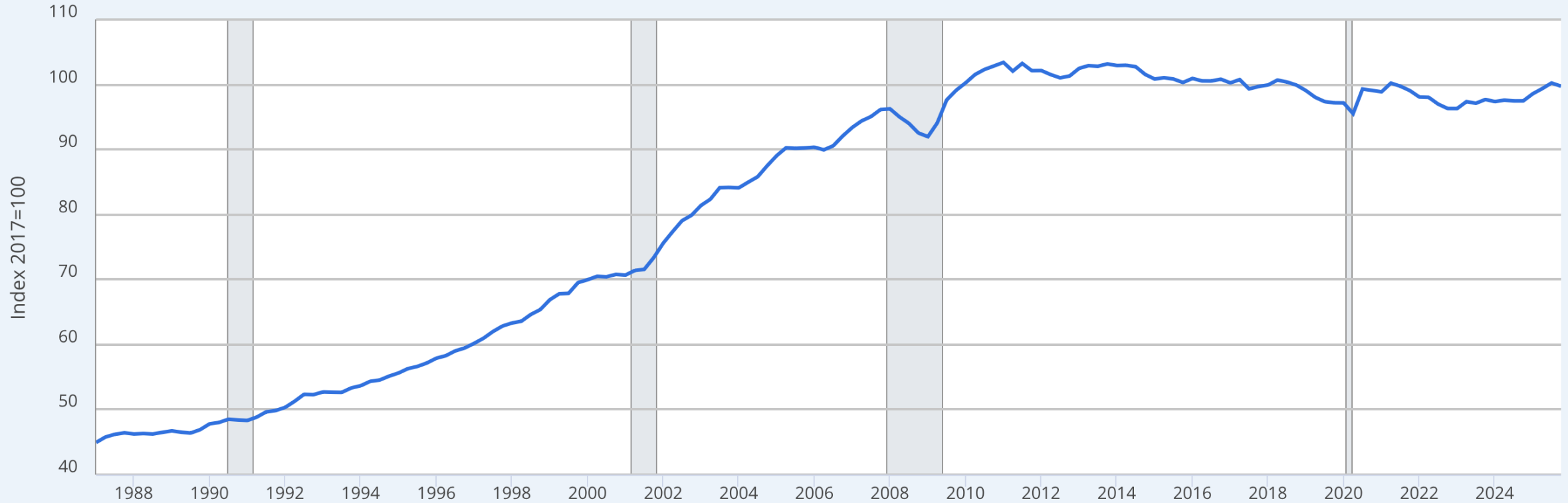
OUTCOME: a kAlzen Mentality

TRANSFORMATION: The Industry 3.9 Rut & the Robot Uprising

The Productivity Plateau & the Harsh Truth

...or Lean gone bad

FRED  — Manufacturing Sector: Labor Productivity (Output per Hour) for All Workers



Source: U.S. Bureau of Labor Statistics via FRED®

Shaded areas indicate U.S. recessions.

fred.stlouisfed.org

Fullscreen 

Effective Silo Construction

Execution
Analysis &
Review

Resource
Availability &
Certification

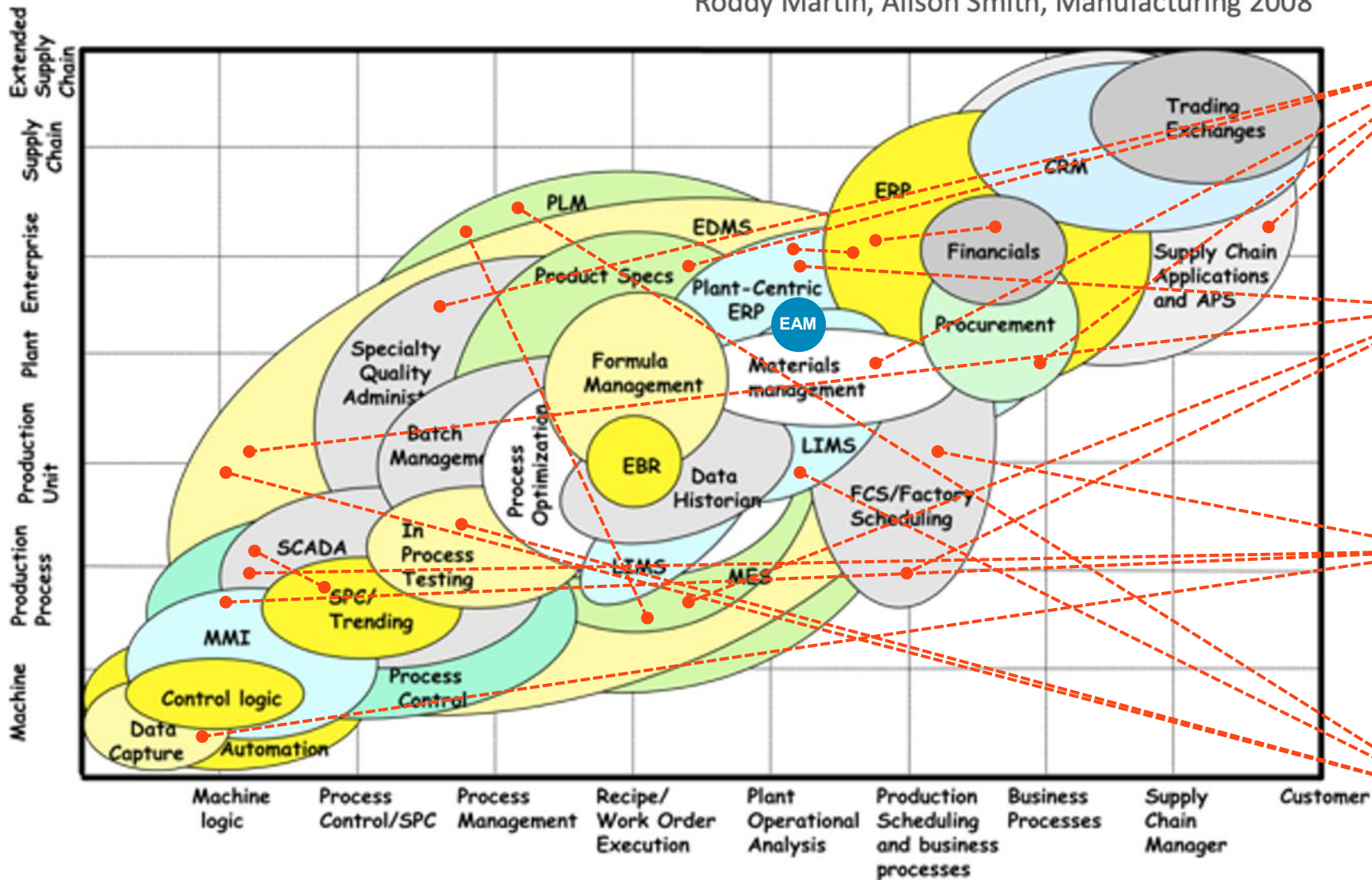
No Plan Survives
Contact...

Material &
Equipment
Performance &
Availability



Humans doing Robot Work

Manufacturing 2.0: The New Framework for Collaborative, Demand-Driven Manufacturing
 Roddy Martin, Alison Smith, Manufacturing 2008



Material & Equipment Performance & Availability

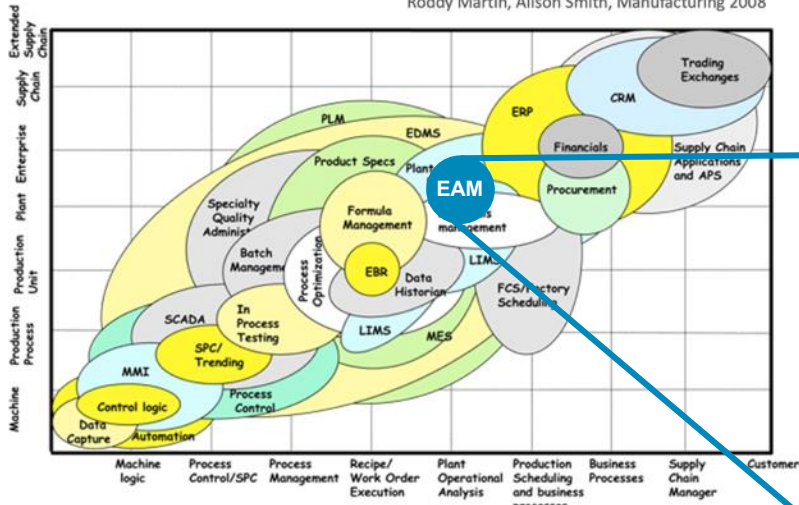
Resource Availability & Certification

Execution Analysis & Review

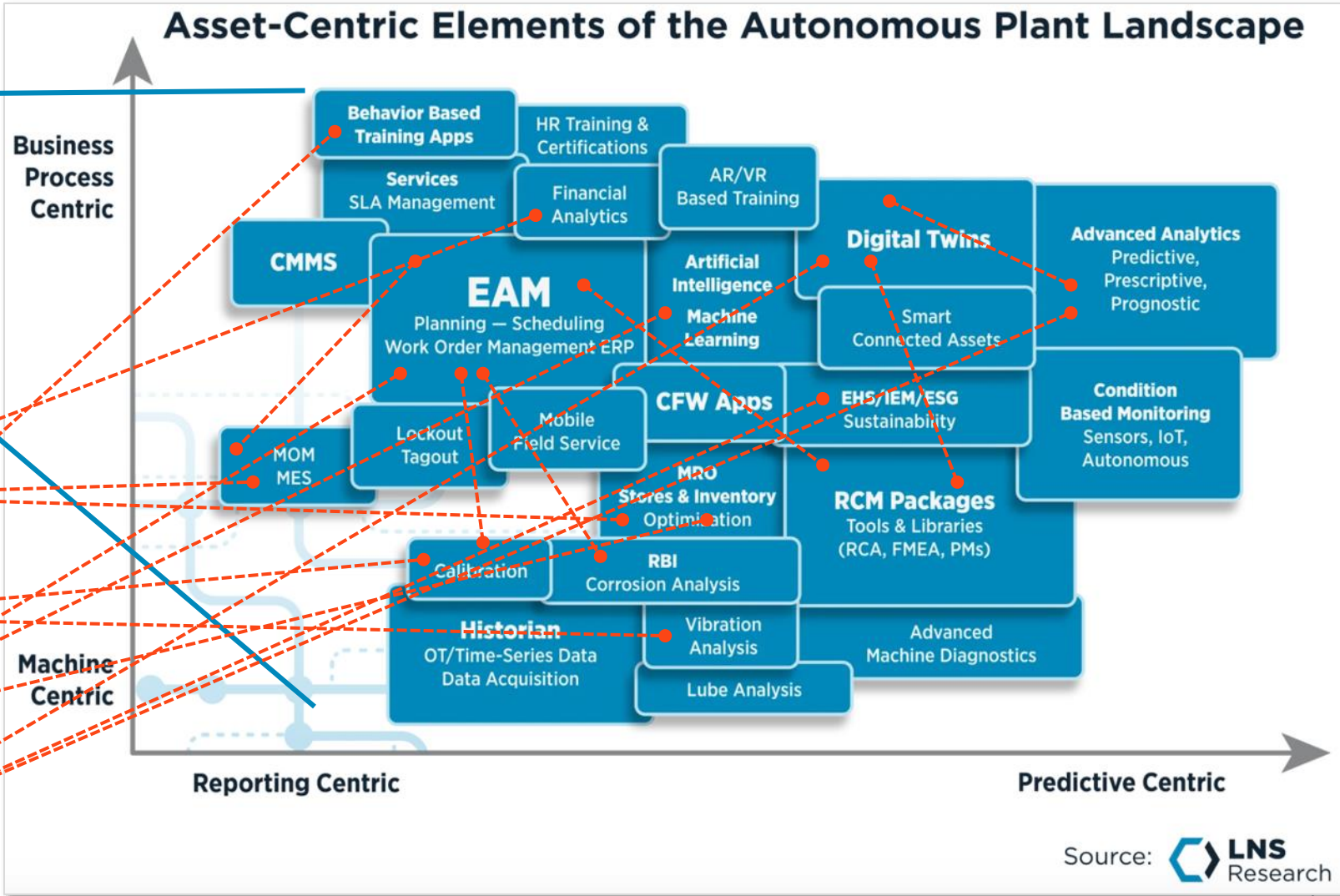
No Plan Survives Contact...

Humans doing Robot Work

Manufacturing 2.0: The New Framework for Collaborative, Demand-Driven Manufacturing
 Roddy Martin, Alison Smith, Manufacturing 2008

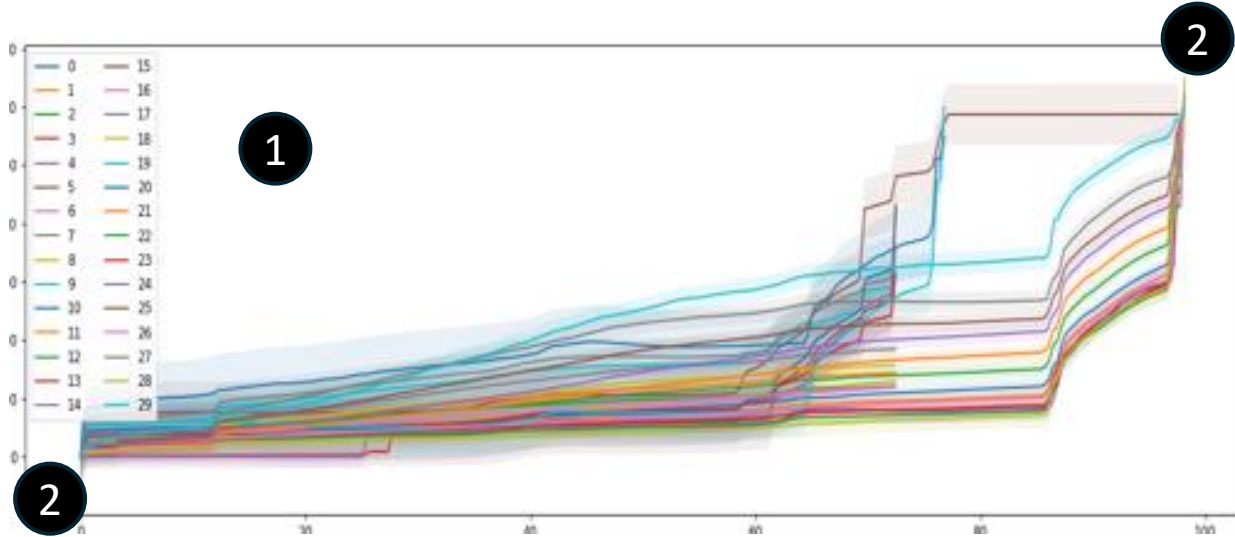


Asset-Centric Elements of the Autonomous Plant Landscape

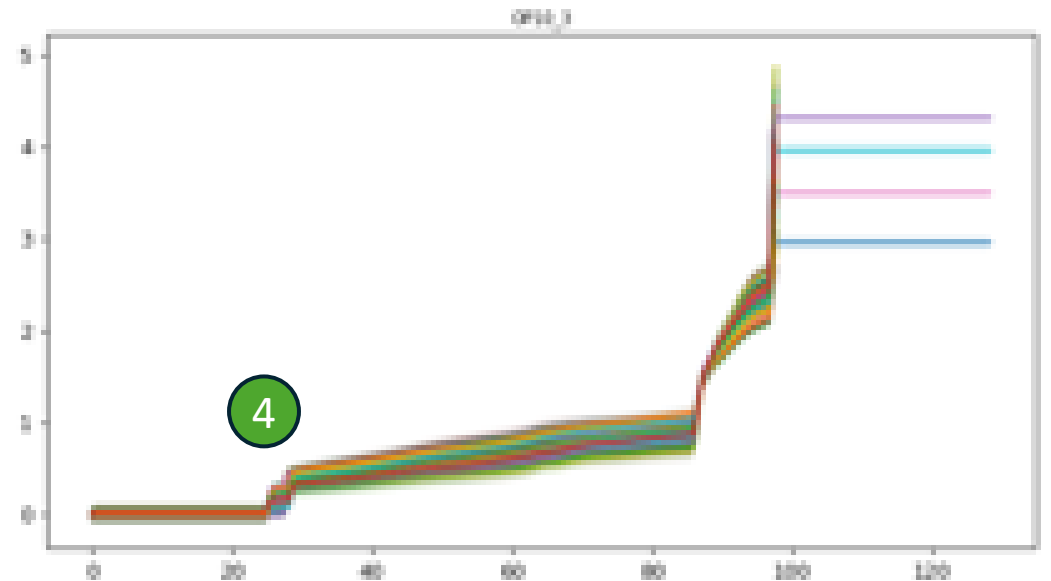
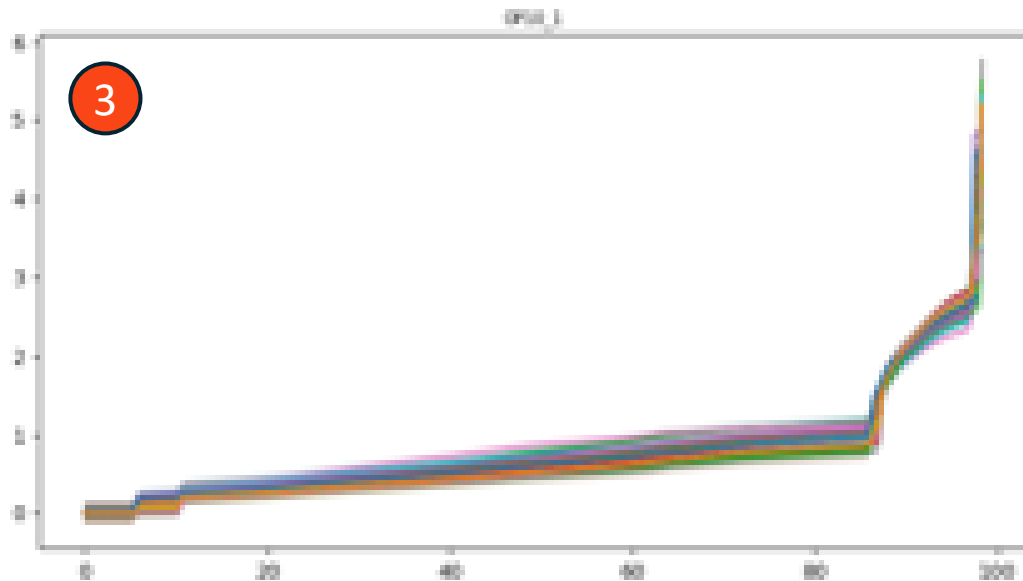


- Material & Equipment Performance & Availability
- Resource Availability & Certification
- Execution Analysis & Review
- No Plan Survives Contact...

Humans doing Robot Work Poorly



1. SCADA records performance curve for assembly
2. SCADA confirms start and end point compliance
3. Process demonstrates highly reliability
4. New cluster emerges unnoticed, **parts fail at OEM with detection only after assembly, with numerous escapes and eight-figure and reputational impact**





The Myth of Uniqueness

Belief
We do 1,000,000 different things

Reality
We really do 100 Things X
10,000 Ways



The Search for an End-to-End Unified Platform

Belief
Operational system consolidation is coming

Reality
Rip & replace “upgrades” are impossible to justify

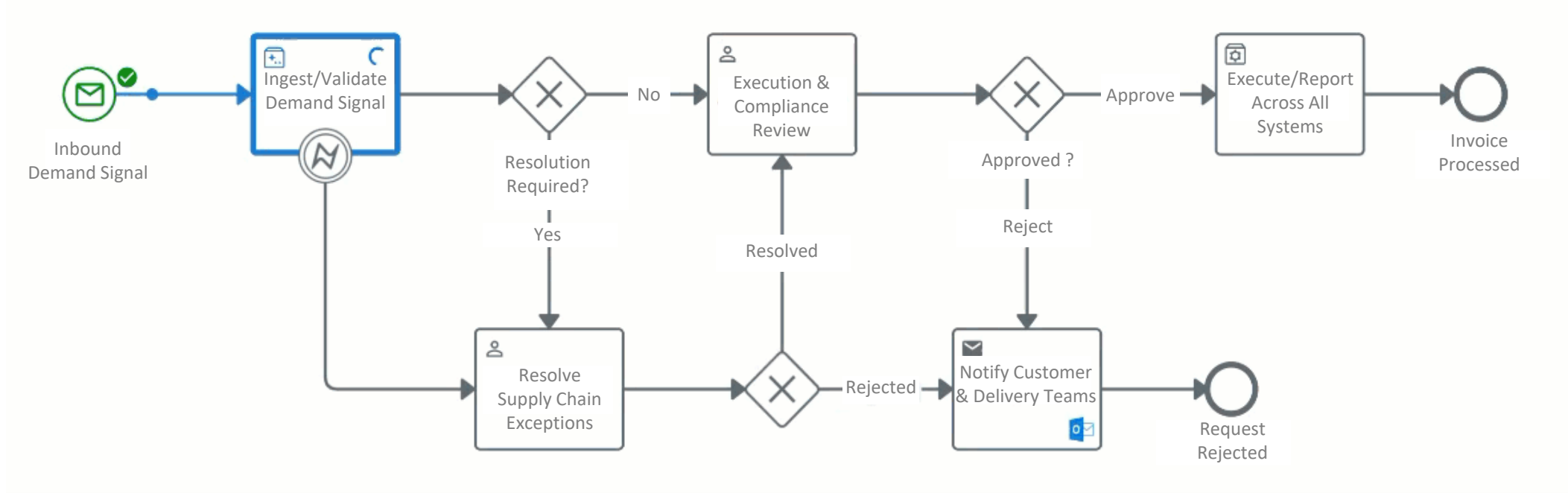


The Great Data-Lake Approach

Belief
We can collect what we need to drive machine learning

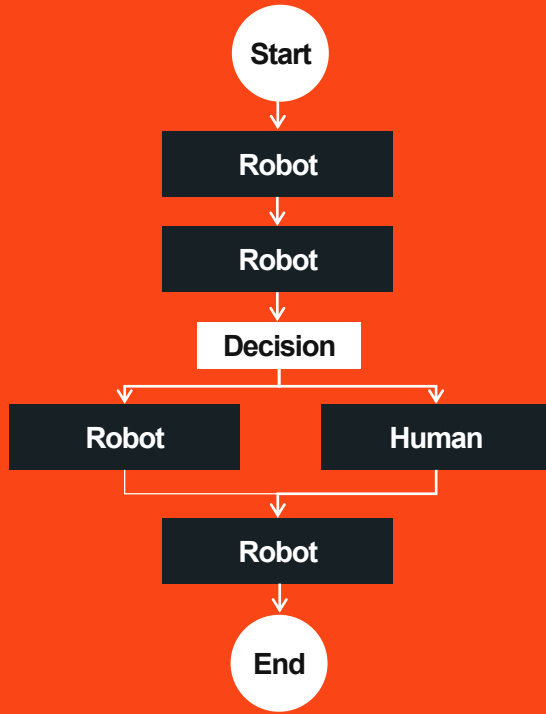
Reality
Incomplete or summarized data embeds bias

The Goal = Industrial Orchestration driving Reliable Performance



Robots

“rule-based” do-ers

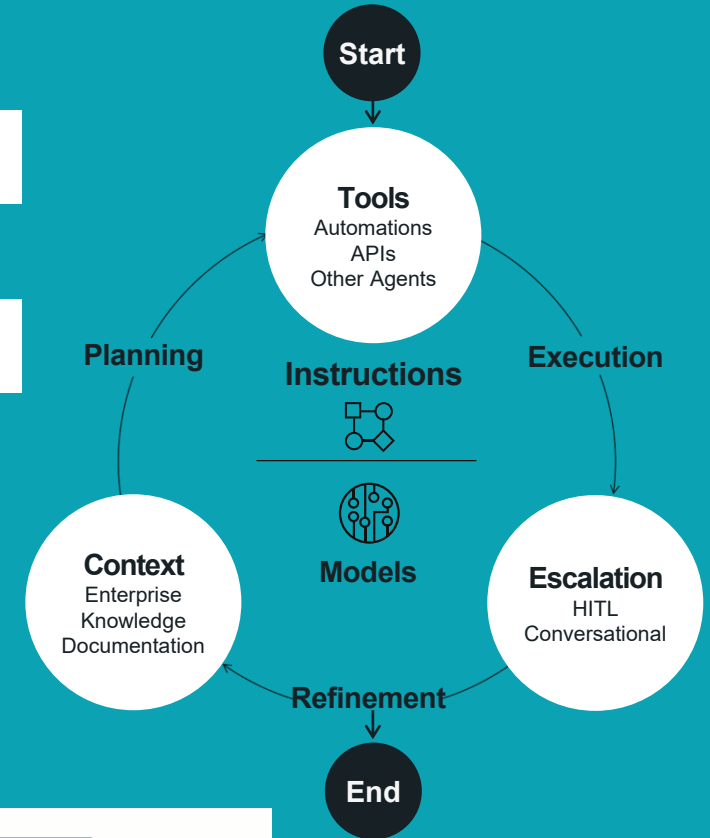


People lead.

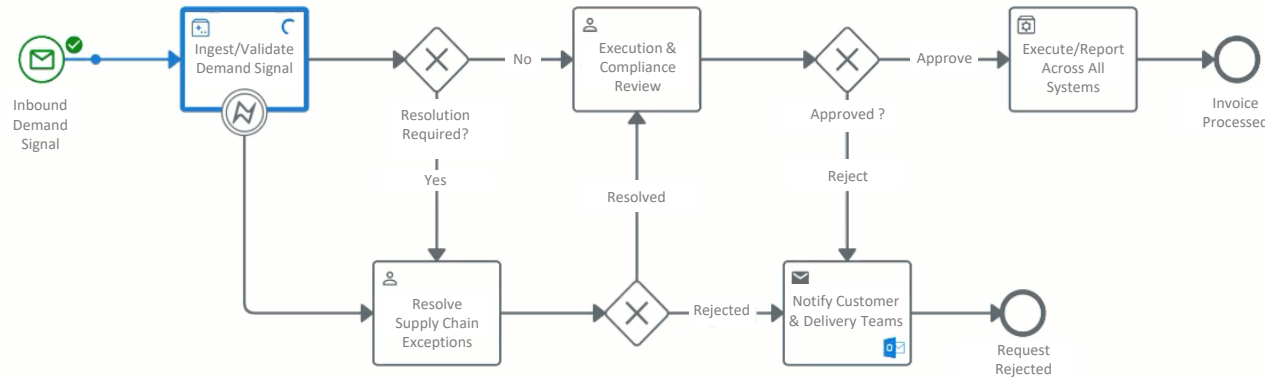
...addressing misdirected talent, mis-applied assets, and non-value-add labor.

Agents

“goal-based” thinkers

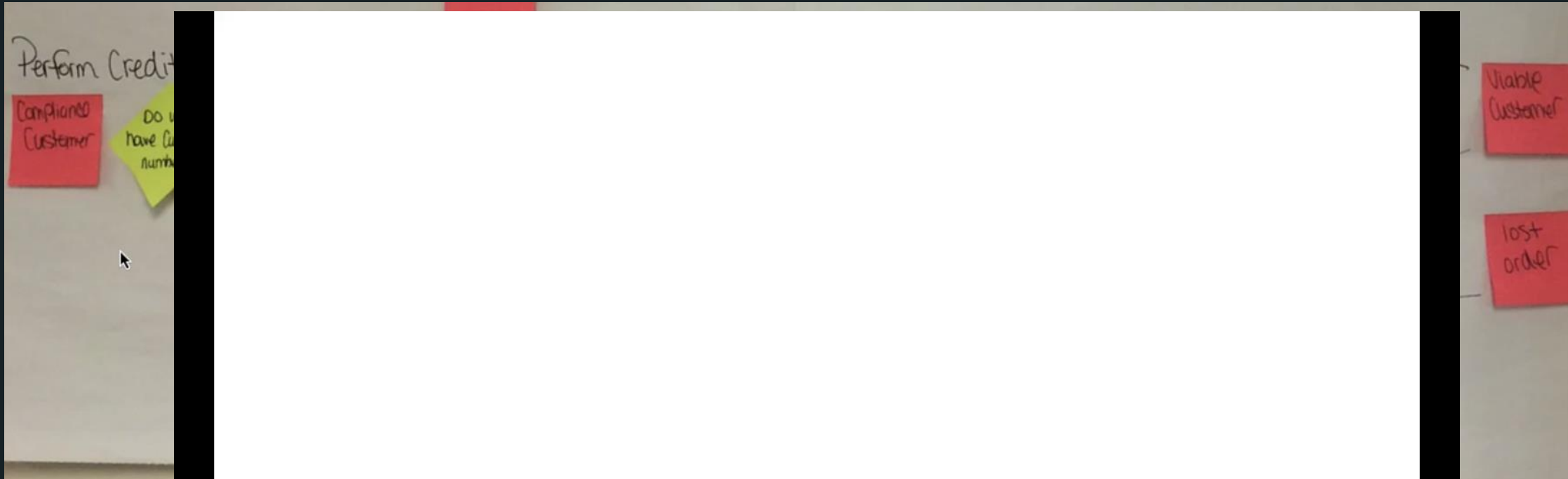
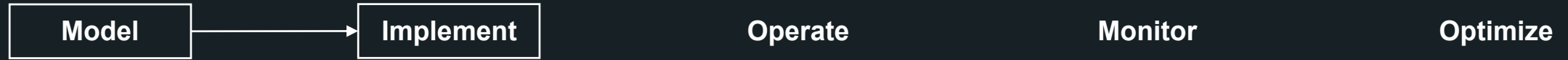


Supply Chain Twin



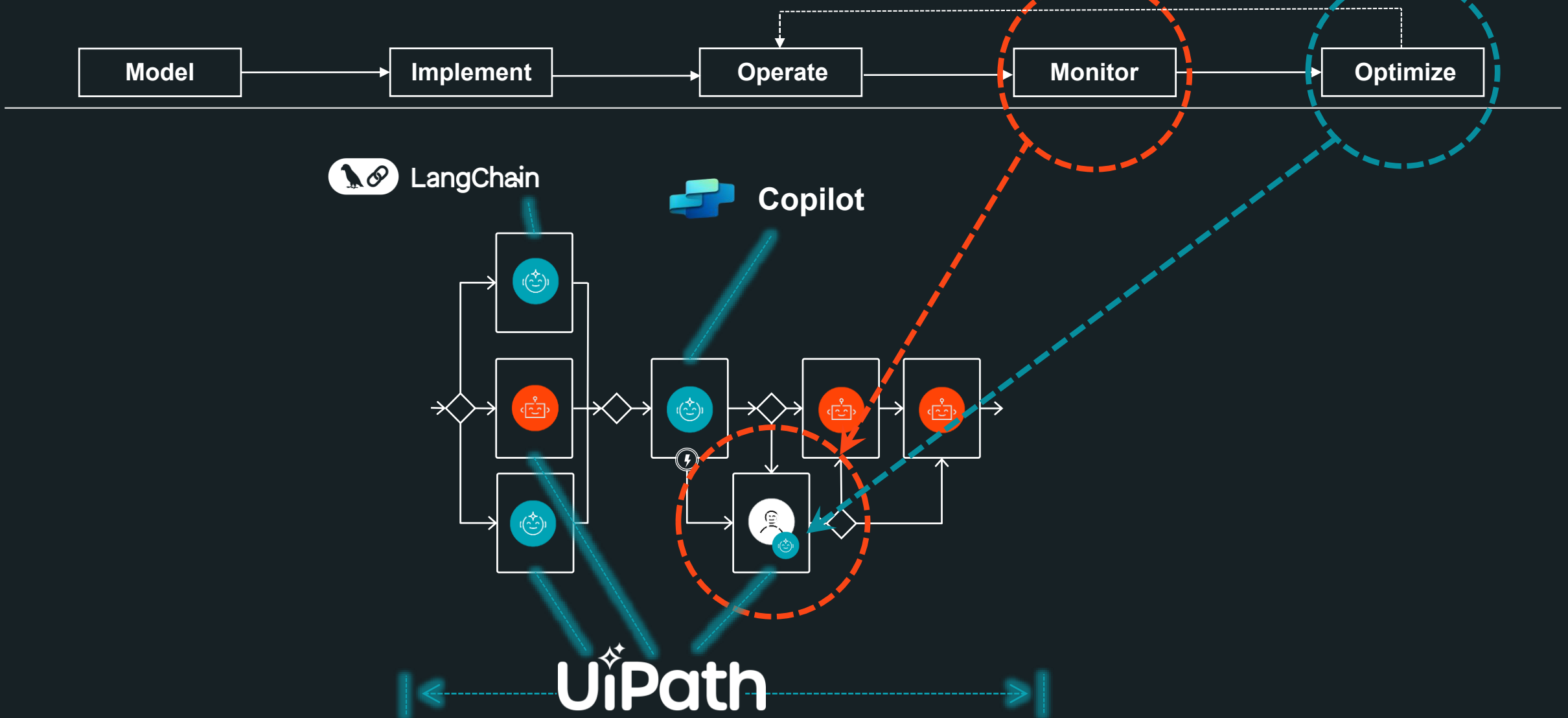
Industrial Process Orchestration

Hard ROI by Re-Directing Talent and Eliminating Non-value-added Actions



Industrial Process Orchestration

Hard ROI by Re-Directing Talent and Eliminating Non-value-added Actions



Quality control & traceability

Automate certification capture, defect detection, and learn from historical patterns to flag anomalies in real time

CASE STUDY

Automating Material Traceability at Scale

80%

Straight-through processing across 20+ document types

1.5M

MTR's processed automatically annually

Business Overview

\$2.5B global distributor with 300+ locations

Serving energy, industrial, carbon management sectors

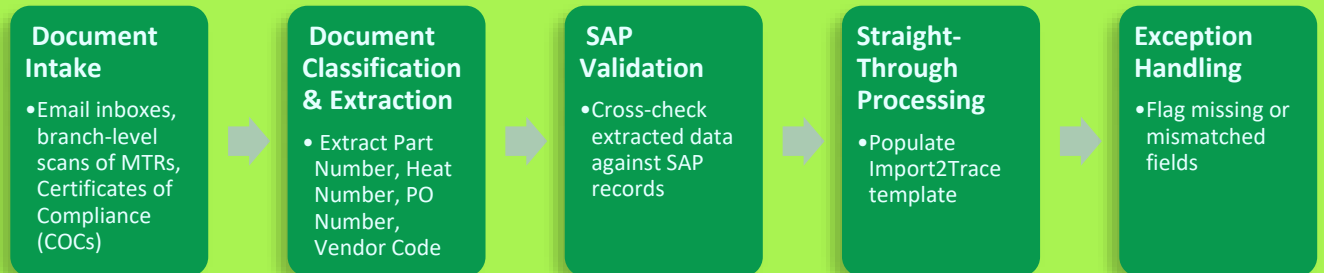
1.5M Material Test Reports (MTRs) annually,

Traceability and compliance are mission-critical.

Challenge

Manual MTR processing led to operational delays, data errors, and compliance risk. Teams spent hours scanning, renaming, and validating dense, inconsistent PDFs against SAP records—slowing operations and exposing the business to liability.

Solution & Approach



Quality control & traceability

Automate certification capture, defect detection, and learn from historical patterns to flag anomalies in real time

Automating Material Traceability at Scale

Certificate of Conformance / Test Reports

For: _____ Date: April 30, 2024
Purchase Order: 26627425 Sales Order: 4055653

Compliance: This is to certify that the items furnished against the above references are manufactured in accordance with Cameron Valves and Process Systems standard procedures and practices. Additionally, these items meet requirements of NACE- MR-0175.

TEST REPORTS / ACCEPTANCE: **SAP# 1138540**

Hydrostatic Tests	Pressure (PSI)	Duration (Minutes)	Results
Shell Test	1180.66	0.25	OK
Seat Top Right	919.624	0.25	OK
Seat Bottom Left	906.368	0.25	OK
Air Tests			
Seat Top Right	94.282	0.25	OK
Seat Bottom Left	82.7359	0.25	OK

INCLUDED IN THIS CERTIFICATION:

Serial #	Body Heat #	Teilpiece Heat #
122160184-011	R55577	R55790
122160184-012	R55947	R55963
122160184-013	R55797	R56057
122160184-014	R55822	R55790
122160184-015	R55797	R54677
122160184-016	R55822	R54690
122160184-017	R55816	R50065
122160184-018	R55947	R54579
122160184-019	R55947	R55968
122160184-020	R55981	R56065

This certifies that the statement and values specified are true, correct and conform to the original data on file at Cameron Valves and Process Systems.

UiPath Orchestrator

Quality / MTR > Queues > Transactions

Search: _____

Export

0 rows selected

Reference	Action
scenario 2 multi sp...	New
scenario 2 multi sp...	New
scenario 2 multi sp...	New
scenario 2 multi sp...	New
scenario 2 multi sp...	New
scenario 2 multi sp...	New
scenario 2 multi sp...	New
scenario 2 multi sp...	New
scenario 2 multi sp...	New
scenario 2 multi sp...	New
scenario 2 multi sp...	New
scenario 2 multi sp...	New
scenario 2 multi sp...	New
scenario 2 multi sp...	New
scenario 2 multi sp...	New

Page 1 / 1

1 - 10 / 10

Items 10

Details Comments History

Specific Data: Object

PONumber: 26627425

PartNo: 1138540

MPNNumber: Empty

HeatNumber: 122160184-019

FileName: \\SRVGC\PDMSGFS01\MTR-CRN-automation\project\BotTest\UAT\DUProcessFolder\R55947 R55968.pdf

Source: NetworkFolder

Branch: AB01

Output Data: null

Analytics Data: null

Recording: False

Stat.	Revi.	Dea.	Retr.	Pos...	Start...	Ended	R...	Exc...
N...	N...		0					

Page 1

1 - 20 / 0

Items 20

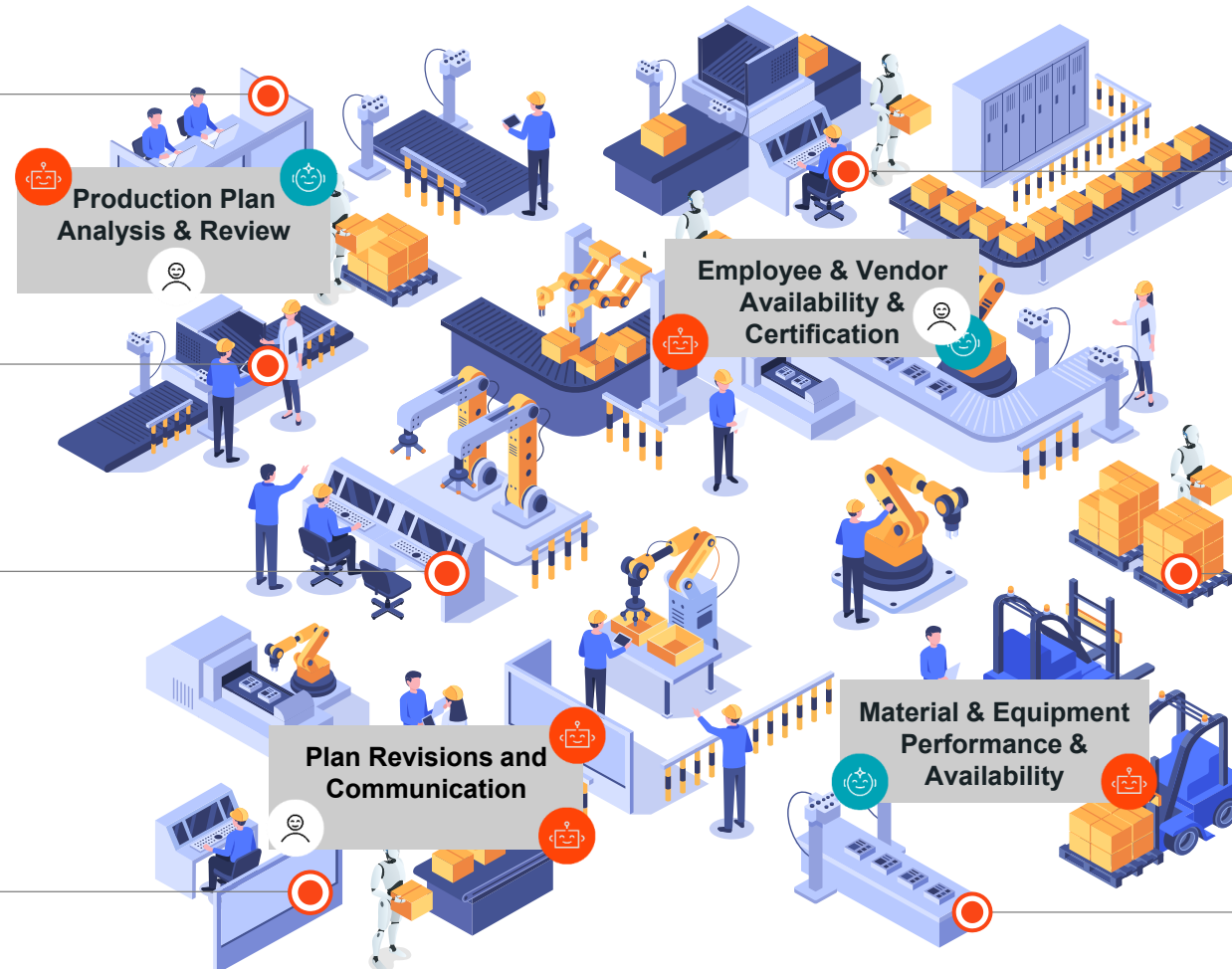
9:49 PM 11/8/2024

People lead. Agents think. Robots do.

Agentic use cases where orchestration is critical to drive reliability and performance

Production execution, predictive maintenance

AI-driven dynamic grouping and optimizing of work orders based on asset, priority, material and labor availability or performance



EH&S, FMEA, GMP, ECN

Enable real-time submissions, approvals, document tracking, and automated compliance validation

Quality control & traceability

Automate certification capture, defect detection, and learn from historical patterns to flag anomalies in real time

Vendor onboarding & management

Manage onboarding, monitor supplier performance and automate escalation based on SLA adherence

Time and attendance process

Agentic systems autonomously validate time logs and reconcile data across HR / payroll systems, confirm certification and streamline staffing decisions

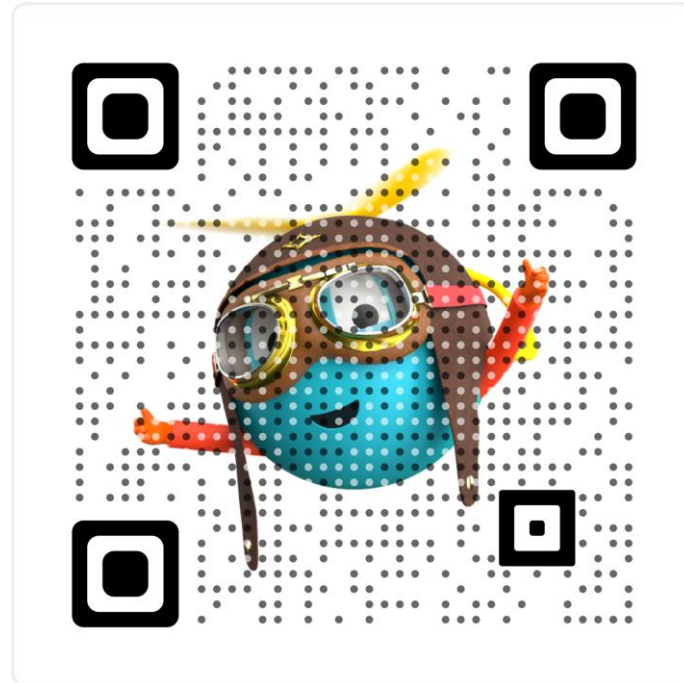
Claims and compliance

Agents extract, verify, and triage claim documents, cross-check and initiate resolution workflows, and provide insight to production orders in process

Inventory management

Real-time, AI-driven stock replenishment that predicts demand and proactively manages supply levels

Learn more



uipath.com/events/ai-in-manufacturing