

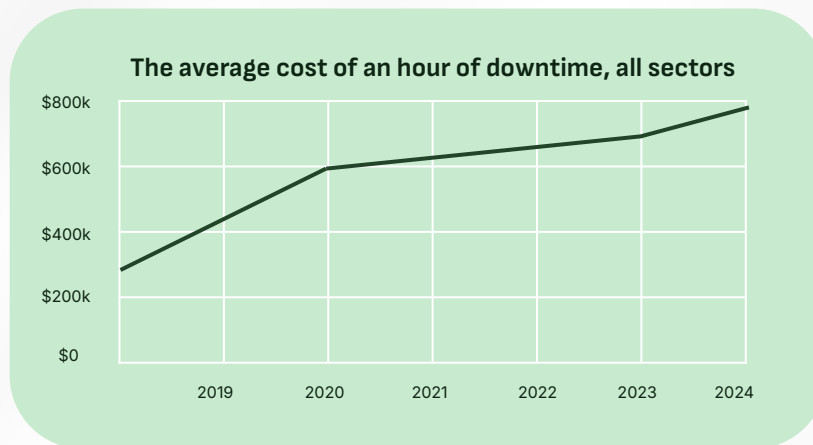
From Downtime Crisis to Control

How The Best F&B Leaders Reduce +\$50M in Annual Downtime Losses

Rob Green - Senior Manufacturing Solutions Engineer

Downtime = a **\$1.4 trillion** problem

An average large plant sees 27-60 hours of downtime per month - and it's rising!



... directly impacting your ability to **profitability meet demand**

Not all downtime is caused by equipment failure



Unplanned downtime

1. Machine breakdowns
2. Minor line stoppages
3. Material stock out and requests
4. Excessive wear
5. Contamination
6. Inadequate training
7. Poor quality raw materials



Planned downtime

1. Preventative maintenance
2. Changeovers
3. Cleaning
4. Training and skill development
5. Compliance
6. Inspections
7. Outages and rebuilds

Top contributors to downtime and escalating costs



Equipment failures

Failures resulting from machinery and equipment issues can cause severe disruptions

Component Wear & Tear
Electrical Failures
Improper Maintenance
Calibration Errors



Human errors

Mistakes made by operators, technicians, or maintenance personnel can lead to inefficiencies and downtime

Improper Operation
Maintenance Mistakes
Insufficient Training
Safety Risks



Production issues

Inefficiencies within production processes can severely disrupt operations

Bottlenecks
Lack Standard Work
Process Control Failures
Improper Scheduling



Quality problems

Issues stemming from poor quality inputs, processes, or standards disrupt production

Defective Materials
Inadequate Quality Control
Rework & Scrap
Insufficient Root Cause Analysis

L2L research on downtime*

Statement

Agree

No consistent system in place for tracking the causes of downtime

40%

Reactive approach to maintenance

67%

Delays in reporting cause a chain reaction that slows everything down

74%

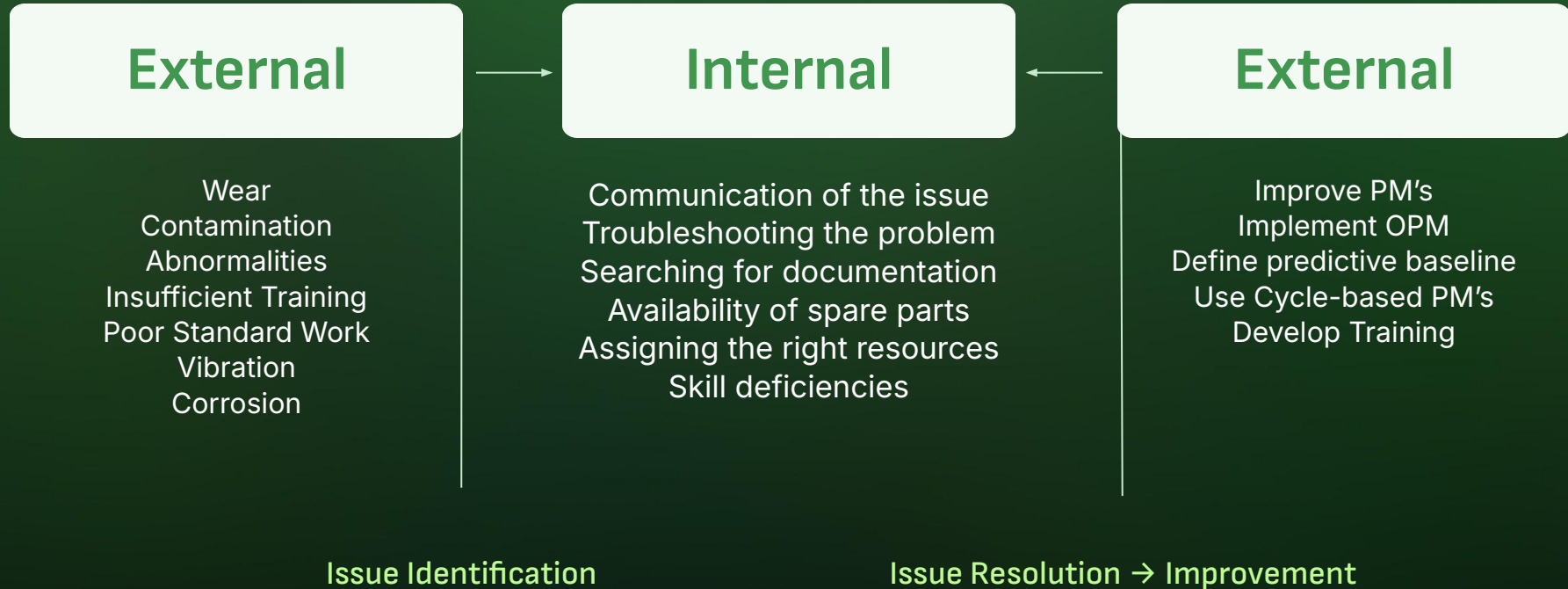


72%

of manufacturing leaders say they still need to personally check in on every downtime event.

Source: Beyond Breakdowns - The Real Impact of Downtime, Research by L2L 2025

The anatomy of downtime



Improve access to data



Connect People and Information

Present the digital documents to the worker when and where they are needed.



Reduce Troubleshooting Downtime

AI tools to suggest downtime Fixes based on historical data



Access Historical Data at a Single Touch

Historical machine and process data available immediately on downtime occurrence



Launch Real-time Notifications

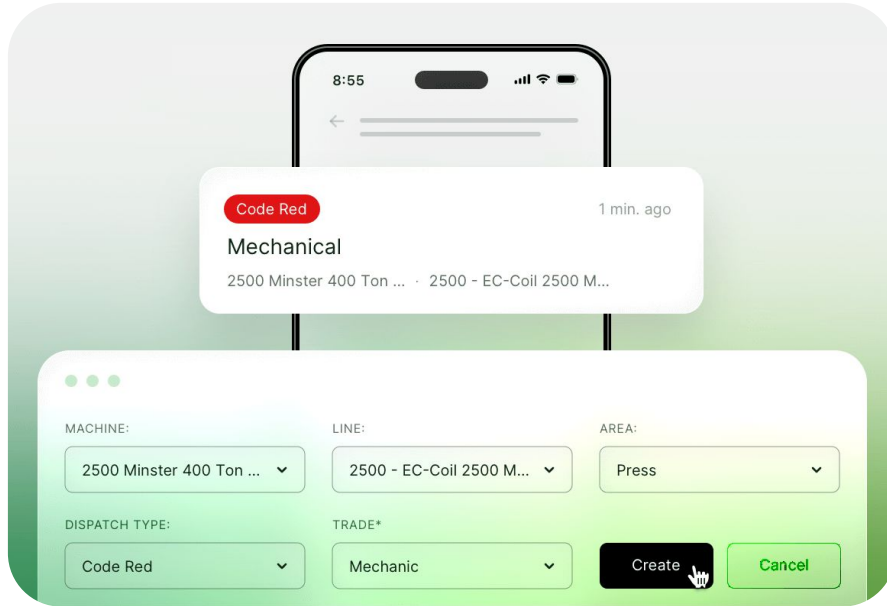
Notification protocols launched immediately when a downtime event occurs



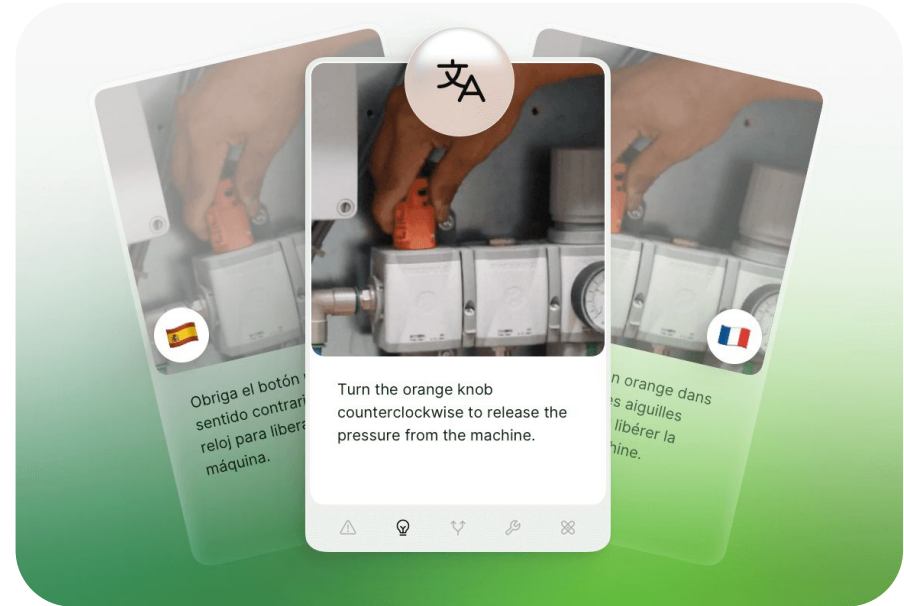
Display Data Visually

Open access to data displayed on dashboard across the facility

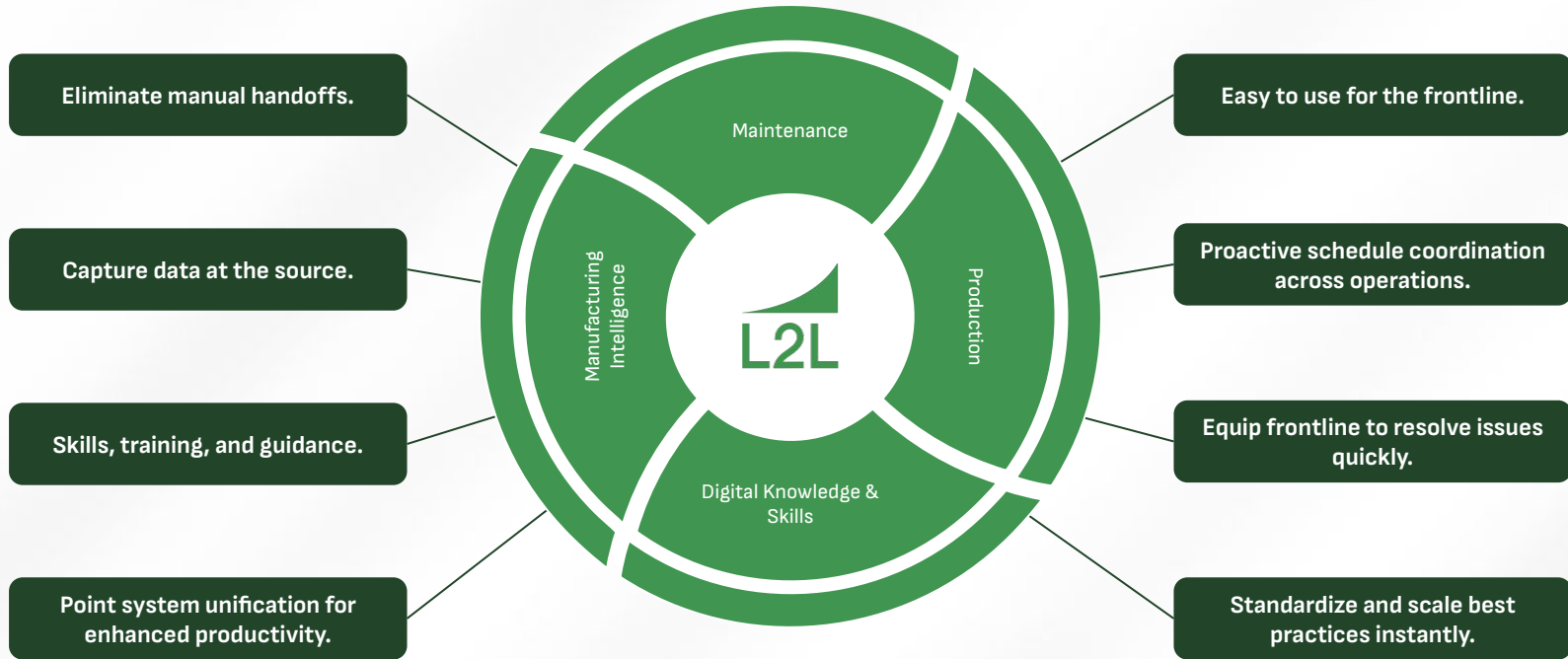
From problem...



... to solution



Connected Manufacturing Operations



Replace outdated legacy technology. Connect existing systems.

Saved \$2M in maintenance costs

"L2L helps our maintenance teams maintain a world-class standard. Everyone has real-time visibility into what's happening at our plant. If we have a problem, we can quickly get to the root cause of it. L2L has not only saved us money, but it has also improved our processes and made us more productive with the resources we have."

Chad Williams, Corporate Maintenance Manager at West Liberty Foods

- **Machine uptime:** real-time visibility into production performance, enabling proactive issue resolution and reduced downtime.
→ +11% machine uptime (from 86.6% to 96.3%)
- **Maintenance efficiency:** by identifying and addressing recurring machine abnormalities, West Liberty Foods made huge steps in efficiency and cost reduction.
→ +88.5% workforce utilization
→ \$2 million reduction in maintenance costs
- **Better collaboration:** Better communication between line operators, maintenance teams, and management, leading to faster issue resolution and improved overall operational performance.



40% less overtime

“Our PM was spotty, only done when critical failures were seen. Maintenance records were filed in a cabinet, often never used again. Things were all written down, but never accessed. Our daily maintenance huddles used to be a pot of coffee and ‘What did you do last shift?’ There was a discussion with really no data and it was based on the most recent occurrence, not data-driven improvements.”

Todd Parker, Plant Engineer at Novus Foods

- **OA improvement:** Better PM adherence and reducing unplanned downtime, Novus Foods enhanced production efficiency and reduced operational costs.
→ 34% increase in OA in 6 months
- **Reduced costs:** Enhancing maintenance efficiency reduce costs. The improved proactive maintenance and faster issue resolution.
→ +30% maintenance technician efficiency
→ -40% decrease in overtime hours
→ -15% repair costs

- **Streamlined operations:** Visibility into machine uptime, accurate spare parts inventory management, and development of more effective PM schedules.



Training time reduces by 50%, recalls by 67% → \$5M in savings

“We put new knowledge out there on the shop floor in an accessible way, and we have the technology to guide people in their way of working. L2L makes it easy to find the information you need fast and perform your tasks accurately”

Joris Stolk, TPM and Digital Transformation Manager at CCU

- Digitized operations across 138 breweries:** Transformed from scattered manual documentation to standardized digital work instructions accessible in 52 languages
 - Global knowledge sharing and faster onboarding
- Achieved measurable operational excellence:** Reduced training time by 50% and cut batch recalls by 67%
 - Saved \$5M monthly on asset care costs through improved first-time-right execution
- Empowered frontline workers:** 79K+ instructions with 150K monthly views give operators and supervisors instant access to the right information at the moment of need
 - Reduced errors and rework



Beyond Breakdowns: The Real Impact of Downtime

→ **607 total respondents from 46 states**

- Average 30 hours of downtime/month (17 of those are unplanned!)
- 60% lose \$250K+ annually
- 93% are taking action, but only 46% see results

... how do you compare?



YOUR FREE COPY



Thank you!
Don't forget to visit us at booth 32.

Book a demo of L2L



Questions?
My email: rob.green@l2l.com