



Christoph Rahn

Head of Quality A320 Family

AIRBUS

Quality Leadership
in a Volatile
Manufacturing Environment

Ramp-Up with no Compromise on
Safety & Quality!

Aviation: An irreplaceable force

4.5 billion

passengers

+48,000

routes served
globally

+3,700

airports with
scheduled
services

82.5%

cabin occupancy



Commercial Aircraft

400+

Customers

97.4k

End 2024 Employees

€50,6bn

2024 Annual revenue

19,362

A320 Family Orders

12,257

Delivered

A320 FAMILY

The best keeps getting better,
creating even more value for
airlines

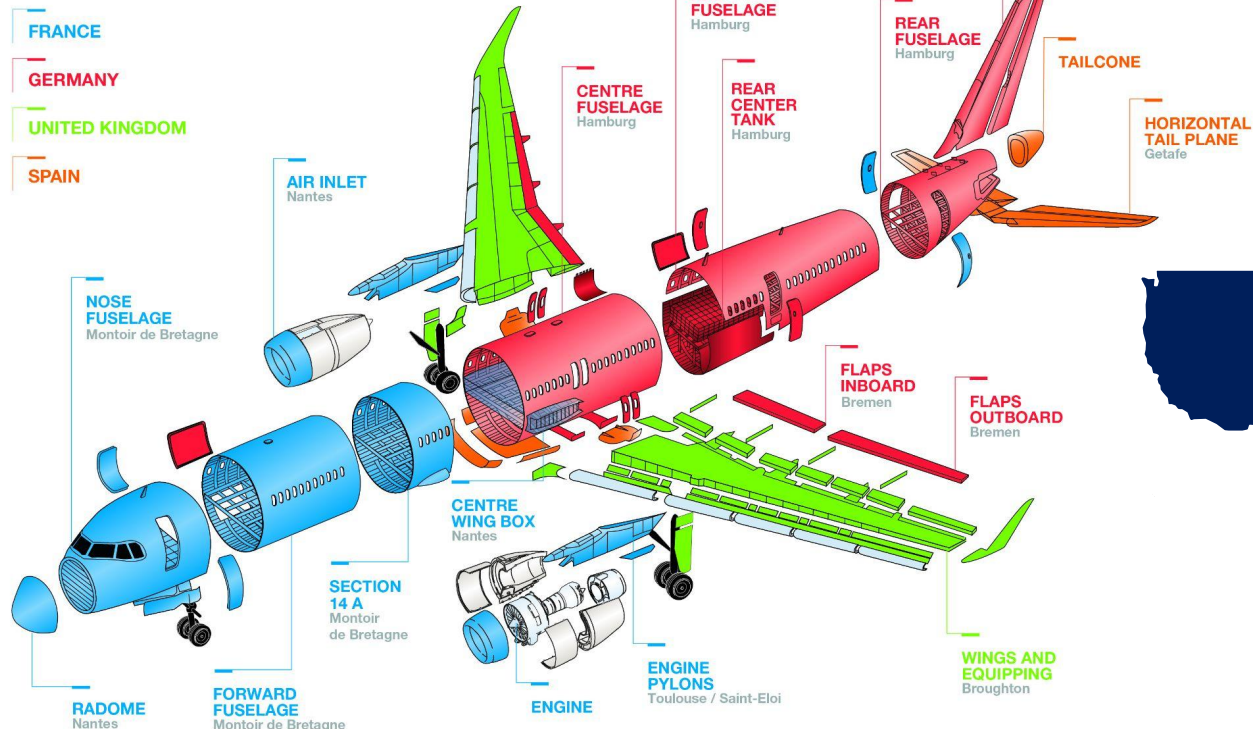
Unbeatable fuel
efficiency

Airspace cabin: perfect space
for passengers and airlines

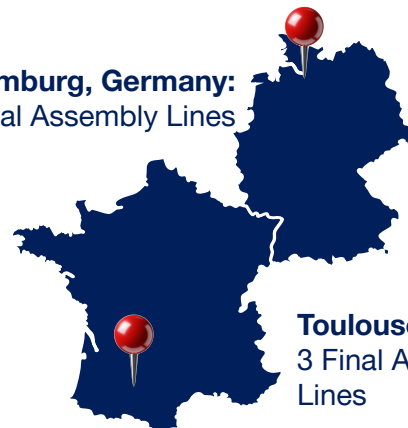
AIRBUS

A320 Family - Quality organization

A321XLR



Hamburg, Germany:
4 Final Assembly Lines



Toulouse, France:
3 Final Assembly Lines

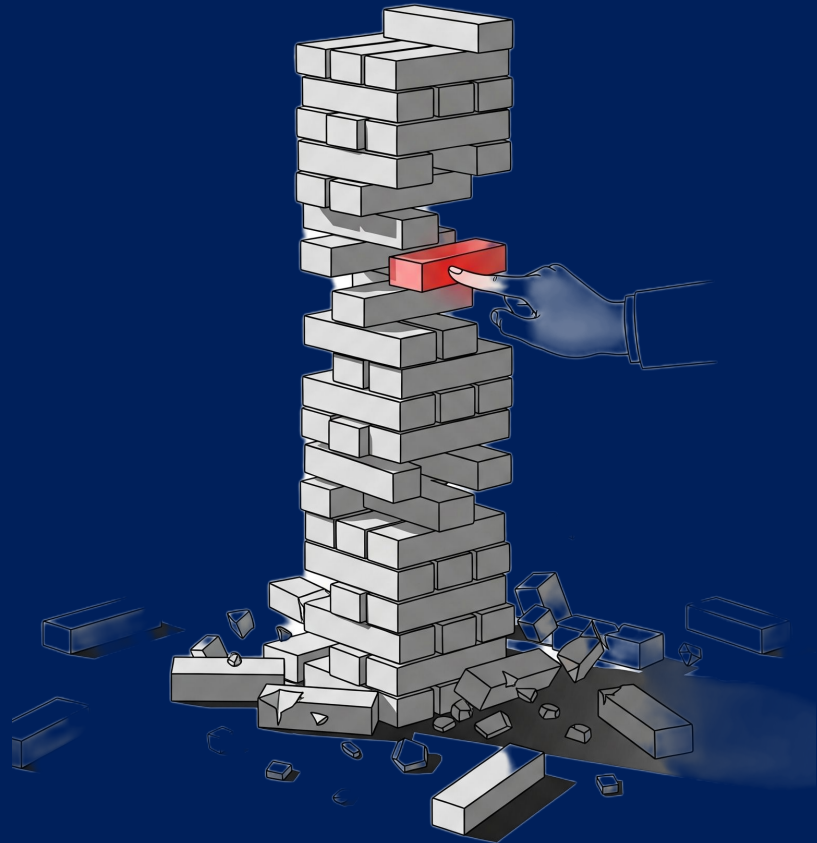


Mobile, Alabama, US:
2 Final Assembly Lines



Tianjin, China:
2 Final Assembly Lines

Why Quality matters: One mistake can jeopardize it all



Challenges



Competencies and skills

Out of sequence work

~80% buy with disrupted supply chain

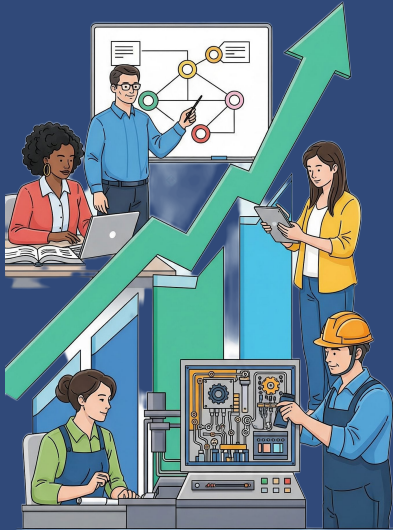
Increasing Focus on Aviation

Ramp-Up

Quality Leadership in a Volatile Manufacturing Environment

Airbus Amber

Ensuring uninterrupted
quality performance



Closing critical
competence gaps



Embedding
accountability and
continuous
improvement



Strengthening resilience
and upholding integrity
in a high pressure
environment



AIRBUS

The Quality Roadmap: A320 Quality Focus 2027

Airbus Amber



Generated with the help of Gemini

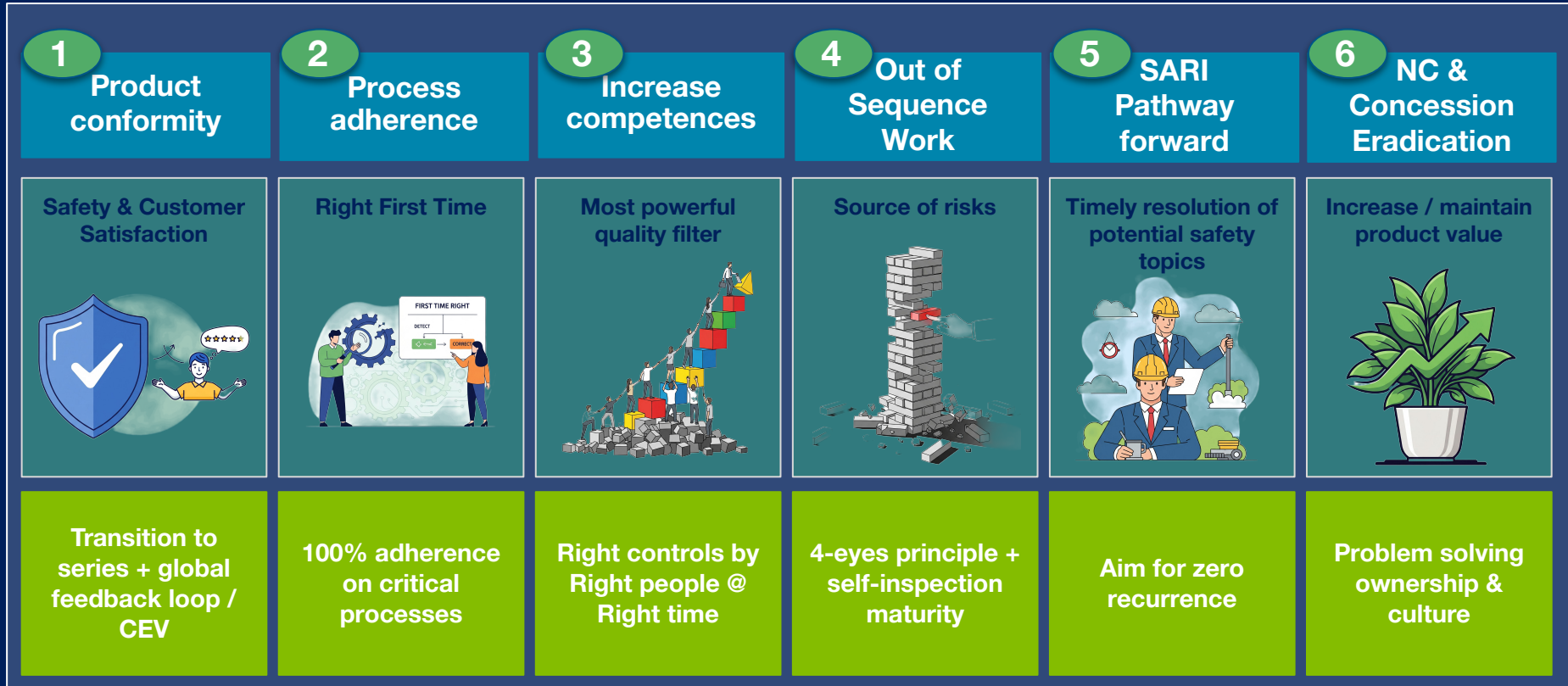
Partnership

Ownership

Simplicity

#missionpossible

Resilience as a Quality Function: The Quality Roadmap Q75



Conclusion

QUALITY =

**STANDARDS x
ADHERENCE**

**CONTROL +
SUPPORT**

**COMPLIANCE +
PERFORMANCE**

Thank you!

Feel free to contact me:
christoph.rahn@airbus.com



Christoph Rahn
Head of Quality A320 Family