

European Biomanufacturing Summit

# Bristol Myers Squibb in Cell Therapy

October 23, 2025

Anton Terwisscha van Scheltinga

Director, Manufacturing Science and Technology

We're inspired by a single vision:

# Transforming patients' lives through science™





## Our mission

To discover, develop and deliver innovative medicines that help patients prevail over serious diseases



# Our cell therapy commitment

BMS is leading the way to unlock the full promise of cell therapy and put more patients on the path to a cure

---

## 13,000+

patients have been treated with a BMS cell therapy\*

---

## 100,000+

Total patients can be treated with a BMS cell therapy by 2030

*\*As of July 2025*



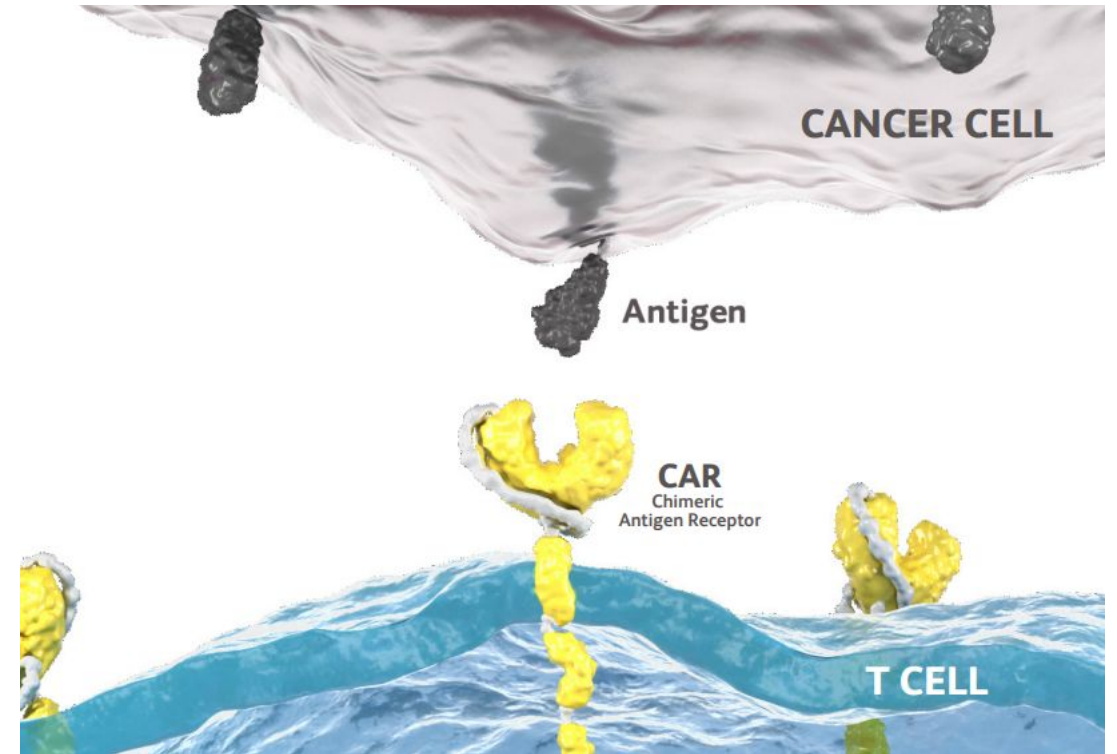
# What is cell therapy?

---

Cell therapy consists of cells that are injected, implanted or grafted to treat disease

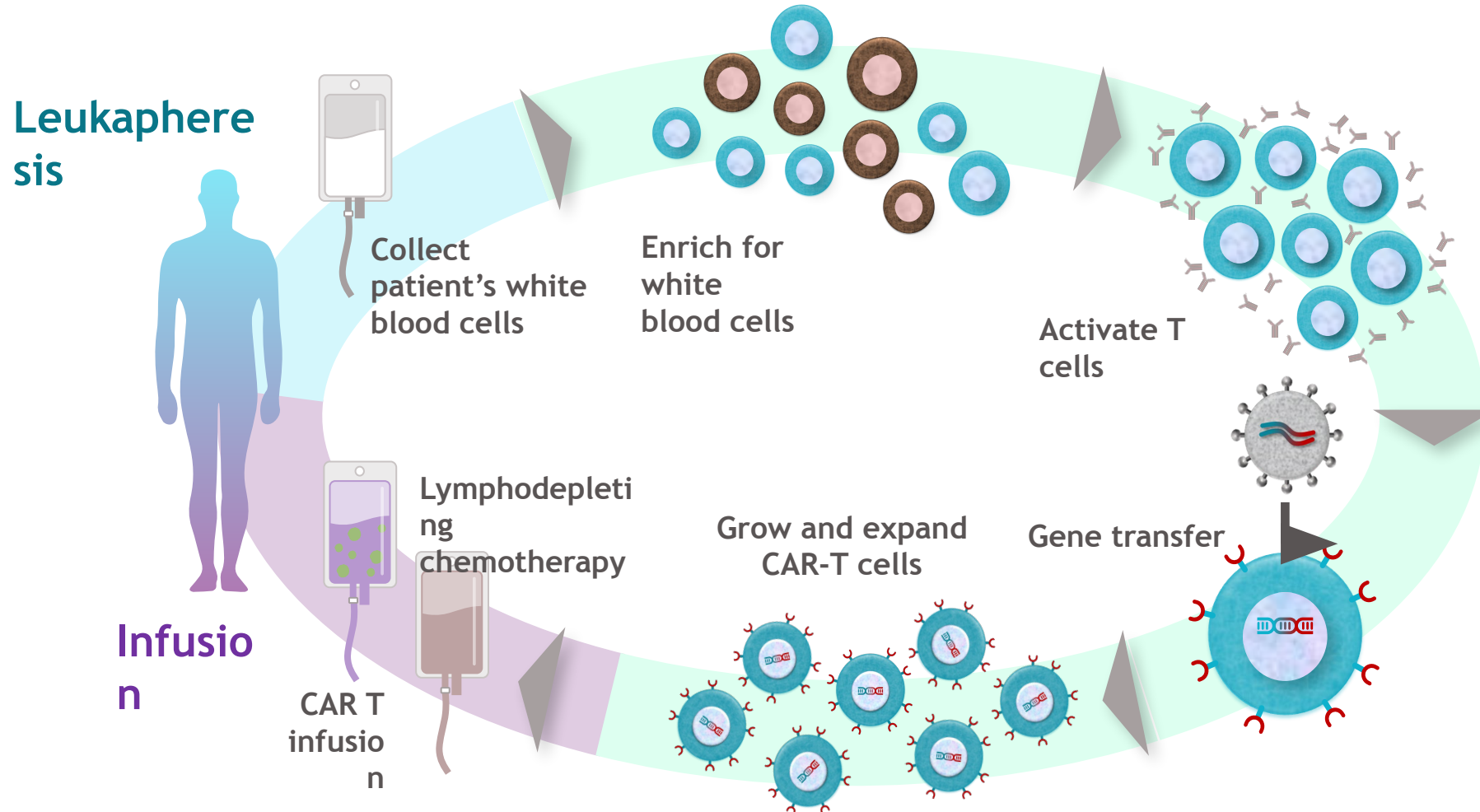
**Autologous chimeric antigen receptor (CAR) T cell therapy** is a type of cancer immunotherapy where a patient's own T cells are genetically engineered to recognize and bind to proteins found on the surface of certain cancer cells - driving T cell activation and killing cancer

**Seven CAR T cell therapies** targeting **CD19** and **BCMA** in hematologic cancers are currently **approved in the U.S. and globally**



# A highly sophisticated manufacturing process

Unlike traditional therapies, autologous CAR T cell therapies are a living drug made from a patient's own T cells, which are reprogrammed during a sophisticated manufacturing process to endow the T cells with disease targeting and potent killing activity. The cells are then delivered to patients with a **one-time infusion**.



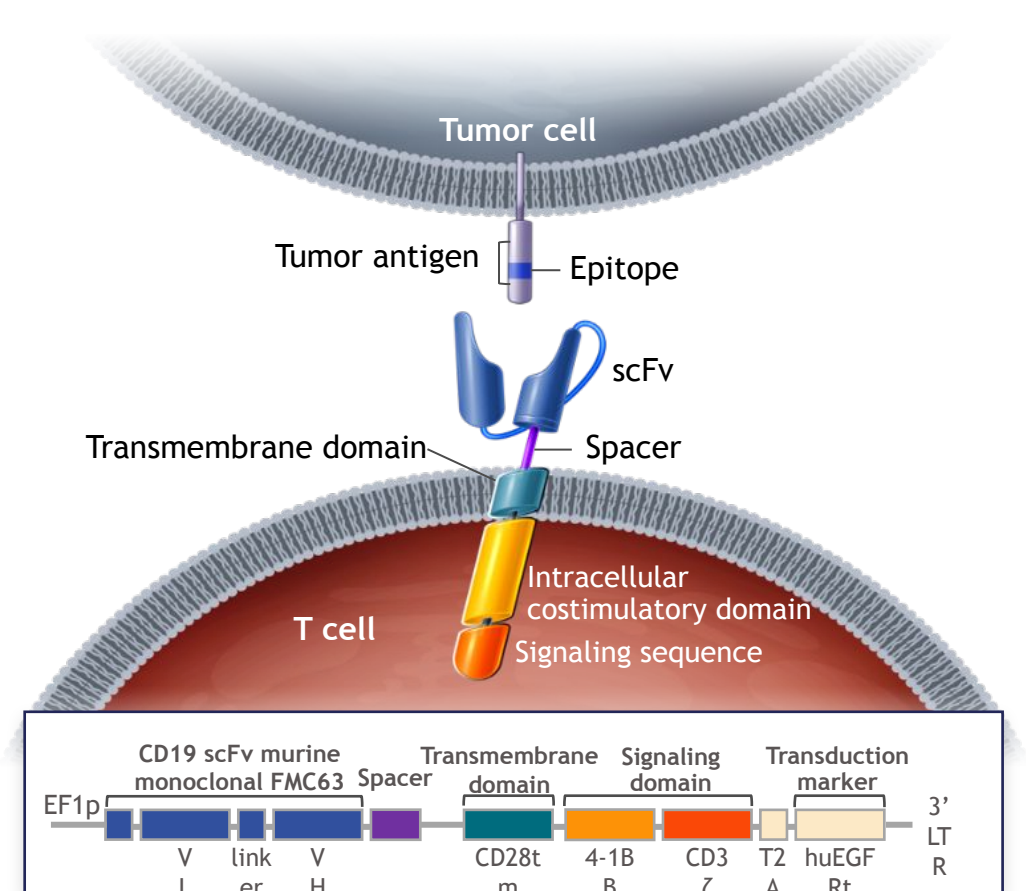
# Bringing together a complex ecosystem to deliver cell therapy to patients



# Breyanzi (lisocabtagene maraleucel)

- *Breyanzi* is a **one-time infusion** that delivers **deep and long-lasting remission**, with a well-established safety profile and a feasible outpatient administration option.
- As the **best-in-class treatment**, *Breyanzi* is differentiated as the first and only CAR T approved in the broadest range of B-cell malignancies with demonstrated favorable efficacy and safety outcomes.
  - Approved: LBCL, CLL/SLL, FL, MCL
  - Ongoing studies: MZL

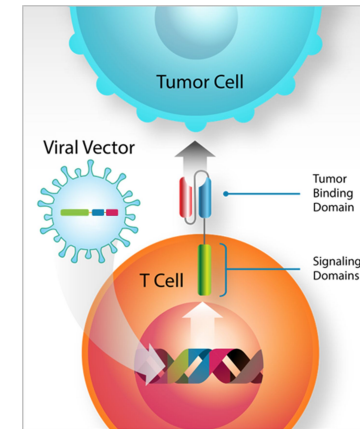
## CD19 CAR T Cell Design



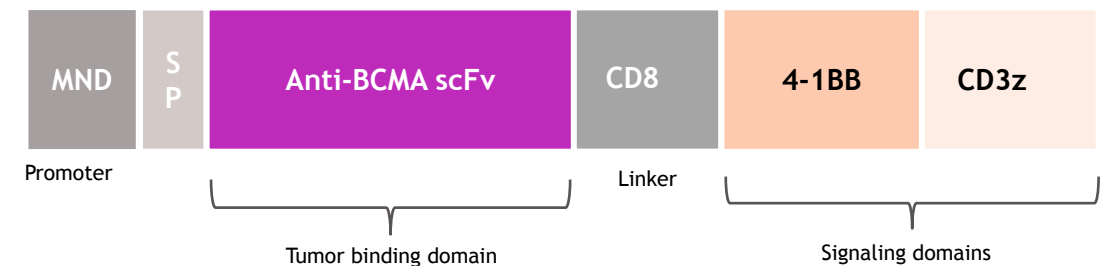
# Abecma (idecabtagene vicleucel)

- As the **first-in-class anti-BCMA CAR T cell therapy** and **first approved CAR T cell therapy for multiple myeloma**, *Abecma* revolutionized treatment of triple-class exposed relapsed or refractory multiple myeloma.
- As demonstrated by the pivotal KarMMa-3 data and reinforced by real world evidence, *Abecma* offers patients:
  - Deep & durable efficacy
  - Well-established safety profile
  - Treatment-free intervals

## BCMA CAR T Cell Design



## Abecma CAR Design



# Looking forward: Our promising near-term pipeline

Key Pipeline Assets

*GPRC5D (arlo-cel)*

*BCMAxGPRC5D Dual Targeting*

*CD19 NEX-T*

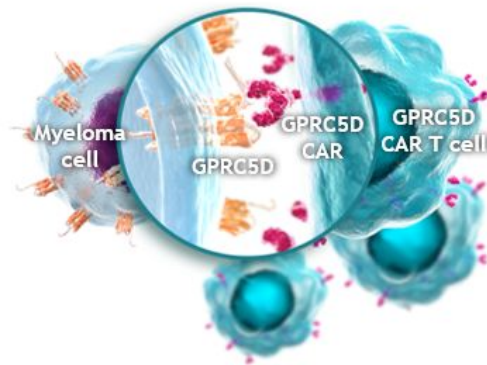
Patient Population

Quadruple-class exposed (post-BCMA) **multiple myeloma**

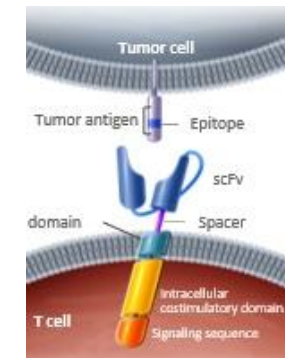
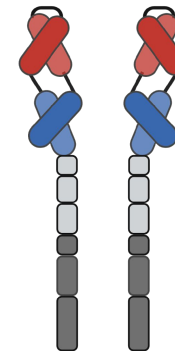
Earlier line **multiple myeloma**, potentially including NDMM

Relapsed & refractory **autoimmune diseases**, including lupus, scleroderma & multiple sclerosis

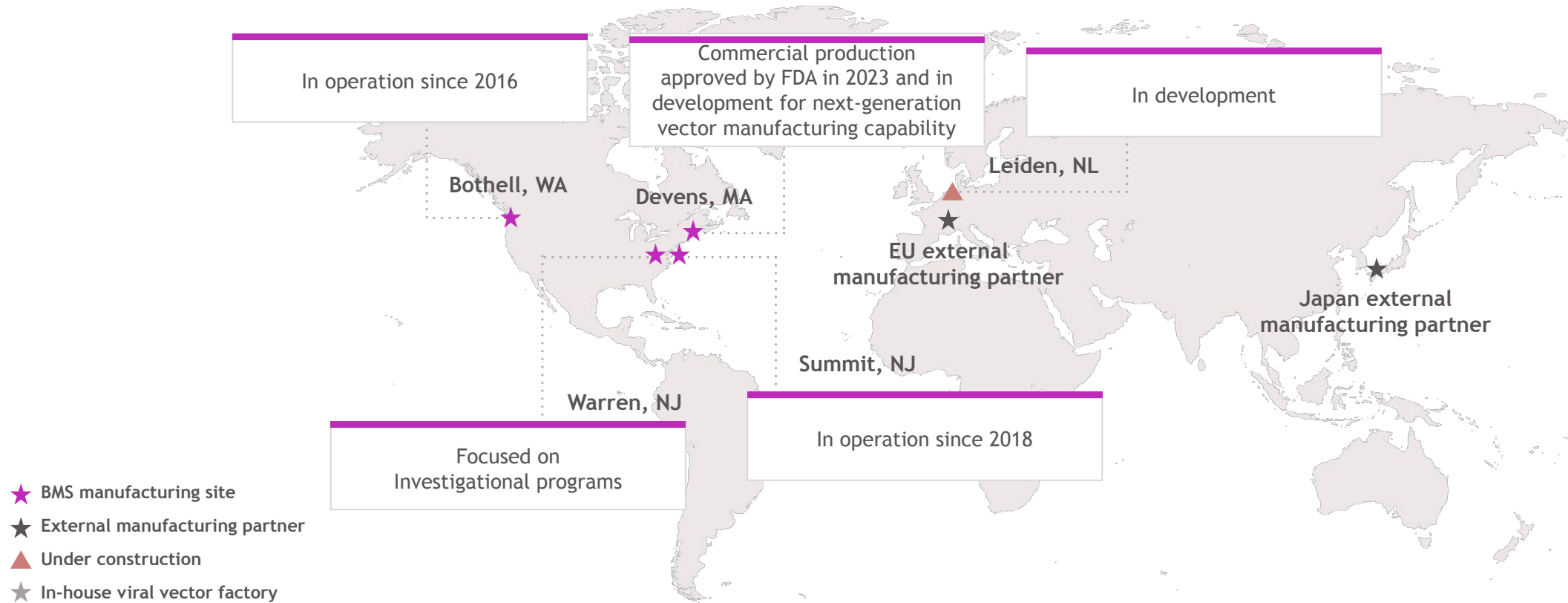
A glimpse at the construct



Optimized bispecific construct



# BMS Cell Therapy manufacturing footprint & network



4 state-of-the-art manufacturing facilities and one additional facility underway, ~5,000 employees, numerous strategic partnerships to meet global patient needs

# Leiden, Netherlands

---

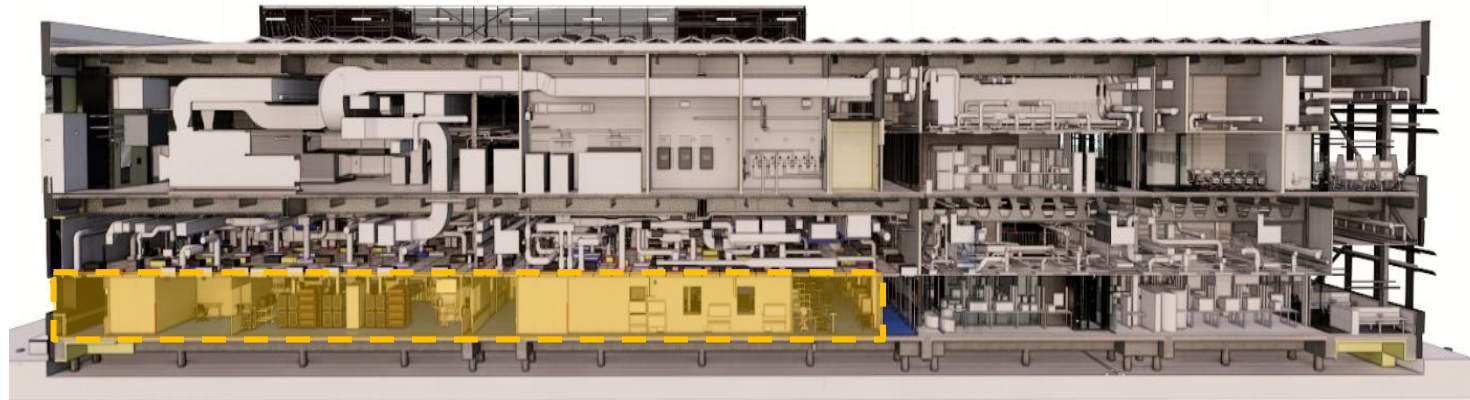
BMS' first European cell therapy facility will be located in Leiden, a flourishing life science region. The site will eventually be the home to several hundred employees working in clinical operations and commercial production. The site will help provide patients in Europe with a faster turn-around time of their CAR T cell therapy.





# Facility Summary

- Dedicated Cell Therapy Manufacturing Facility in Leiden, The Netherlands.
- Key GMP areas:
  - APH Receipt Area
  - Isolation suite
  - Laboratories
  - Cell Processing Suites
  - Filling Suites
  - Media Preparation Suite
  - Kitting Area
  - Future expansion shell space
- Abecma and Breyanzi commercial and clinical capabilities for greater EU



# What is our current focus and what's next?



Construction

- Commissioning and Qualifications
- Tech Transfers
- Validation studies
- GMP inspections
- Filing

- Ramp project
- Clinical and Commercial manufacturing
- Next Tech Transfers

# Thank you