

Enhancing Supply Chain Performance

How a Top 10 life sciences company aligned global QC and SC functions with AI-powered planning and scheduling

October 22nd 2025



Ben Van Lancker

Partner and VP for Binocs

Technology, Bluecrux

A background image showing two scientists in a laboratory setting. They are wearing white lab coats, blue gloves, and face masks. One scientist is holding a pipette and transferring liquid into a small vial. The other scientist is looking down at something on the lab bench. The image is dimmed to allow the text to be the primary focus.

Integrating
Quality Control
and
Supply Chain
at a Top 10 Life Science Company

Ensuring QC has a seat at the table

MANUFACTURING

Let's not postpone this yet again, it puts the asset uptime in danger!

QC

We just finished rescheduling the lab based on the priorities we agreed 2 days ago. Can you please align with those priorities? I can't reshuffle analysts just like that!

PLANNING

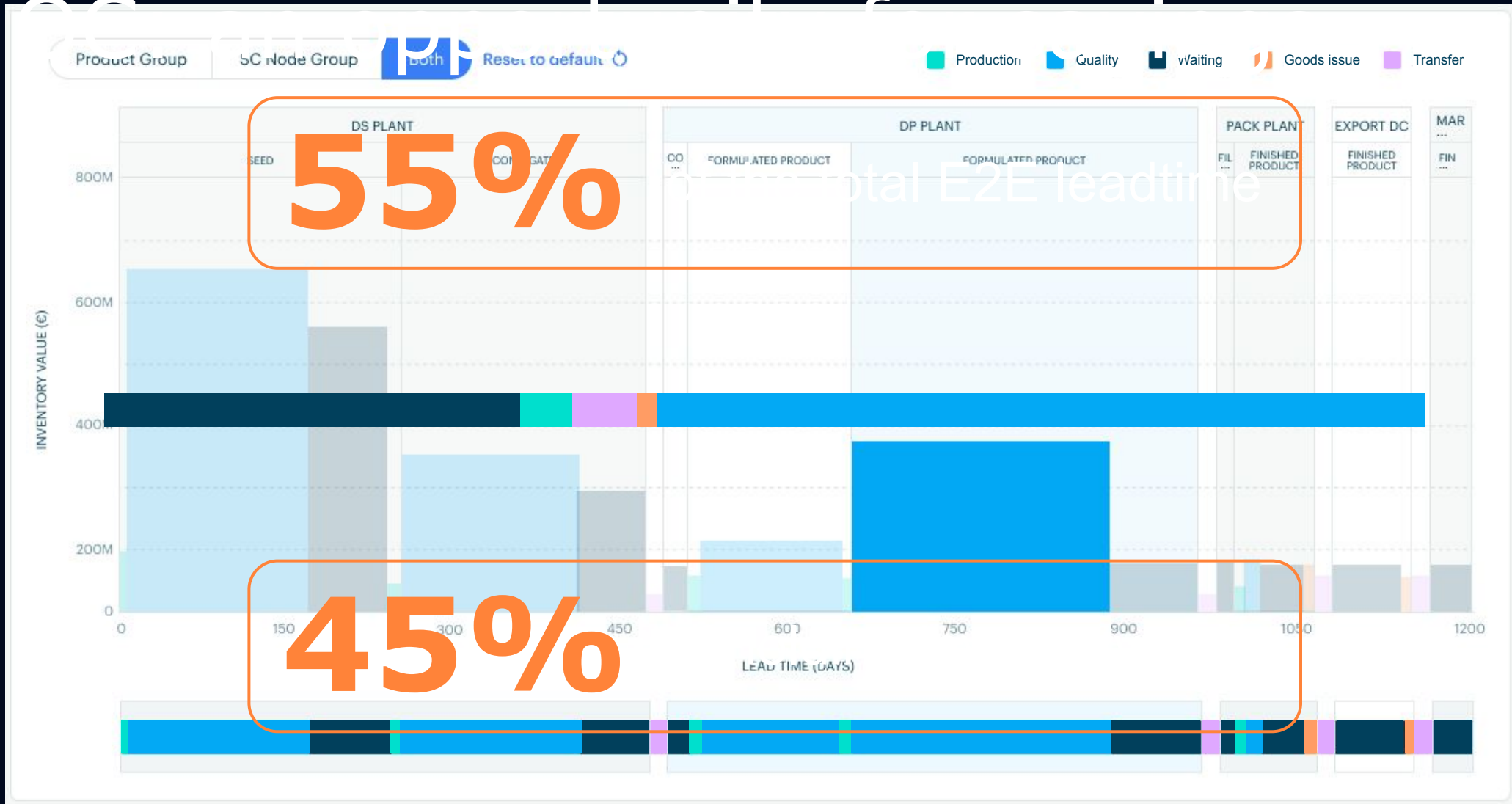
I just had a call with the markets, priorities have changed, we really need to prioritize product X as we risk going out of stock

SCHEDULING

I have no space left in the next 2 weeks, unless we postpone maintenance on the packaging line

MATERIAL SOURCING

Yes, but be sure that you have the raw materials available!



A Top 10 Life Sciences company..?

...with a
Global Vaccines
QC Network

>65k
employees
worldwide

Active in
75
countries

37
manufacturing
sites globally

2m
tests performed
annually



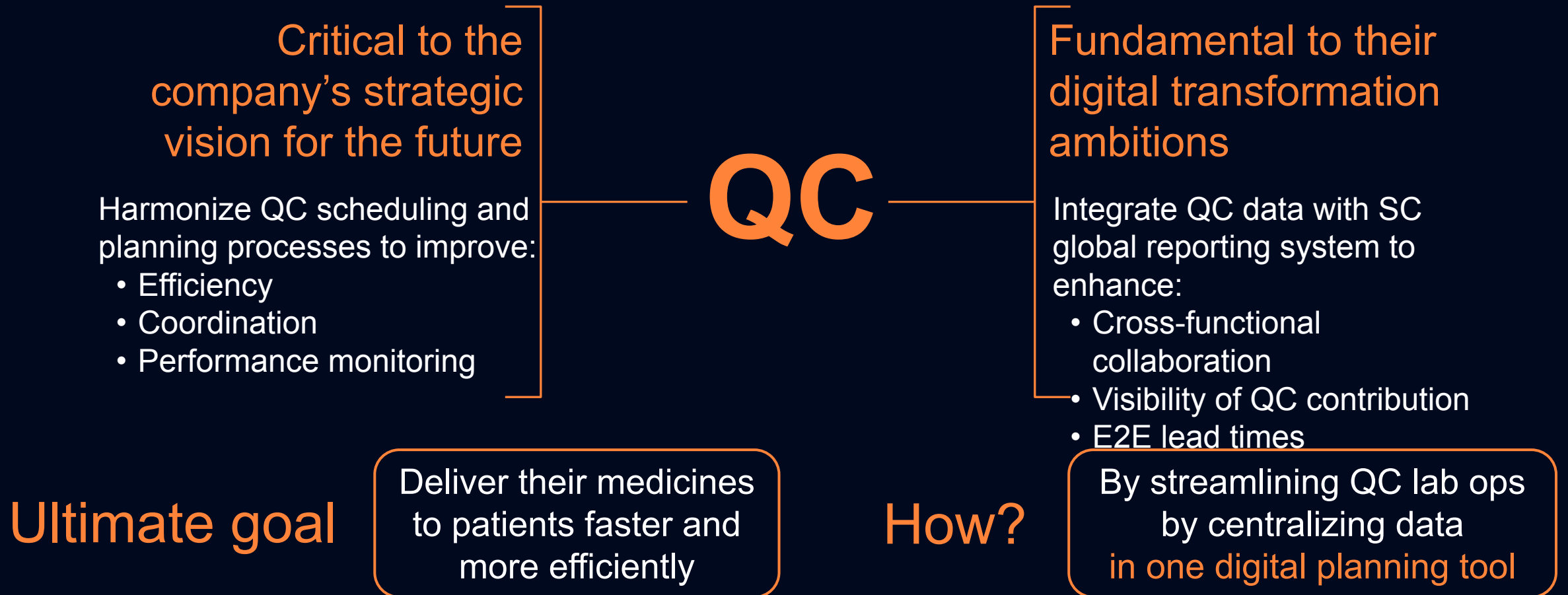
300k
tests in
release panel



12k
production
lots

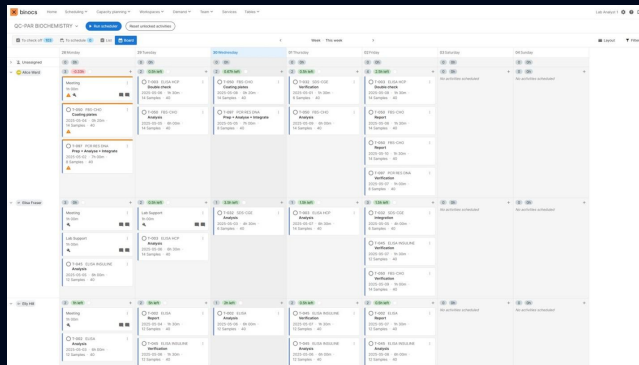
All originally scheduled manually using cards or Excel workbooks

So, why align QC and Supply Chain?



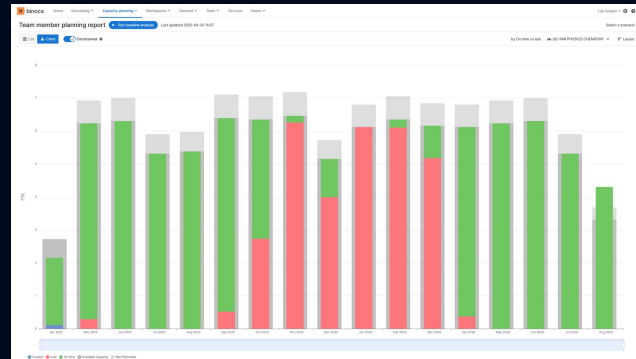
What Binocs offers QC operations

AI-powered scheduling



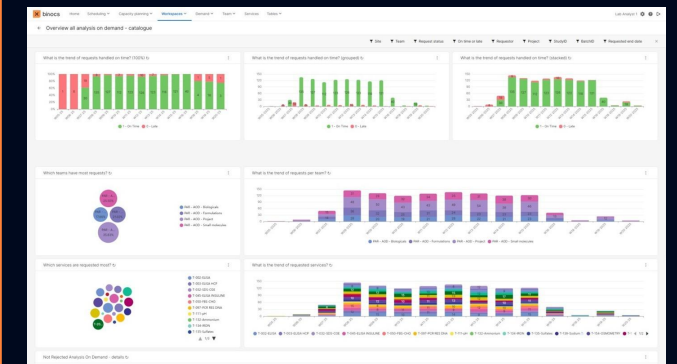
Constraint-based task allocation rooted in established standard times and business rules

Capacity planning



Avoid last minute firefighting with mid- to long-term forecasting and what-if scenario modelling

Performance management



Predictive dashboards for insights into expected batch release, resource utilization and much more

What would such a digital planning tool need to do?

Synchronize and group the execution of tests in the most efficient way

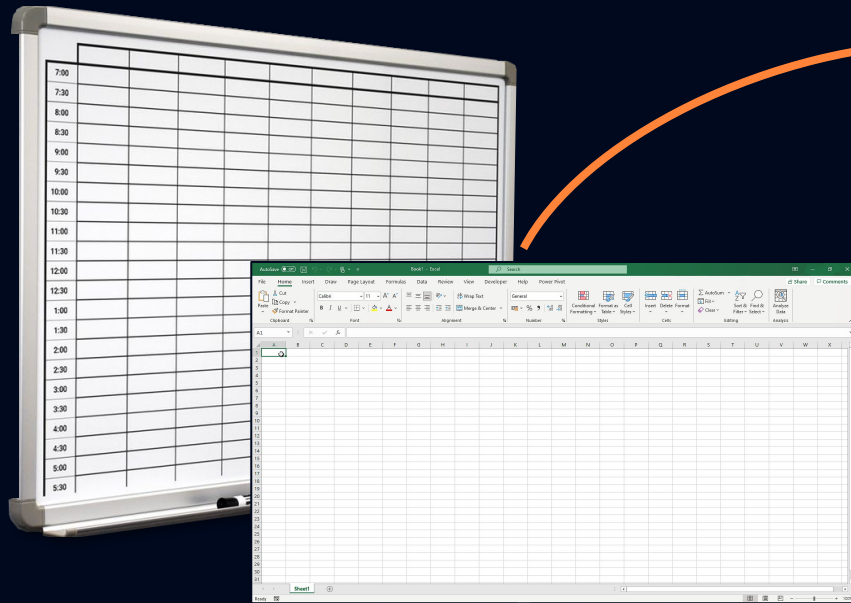
Increase on-time testing / release and enhance efficiency gains

Automatically highlight testing sequence / levelling to the different labs

Pro-actively project capacity and capability of the different QC labs

Anticipate bottlenecks in QC operations at short- and long-term horizons

The goal of digitalization

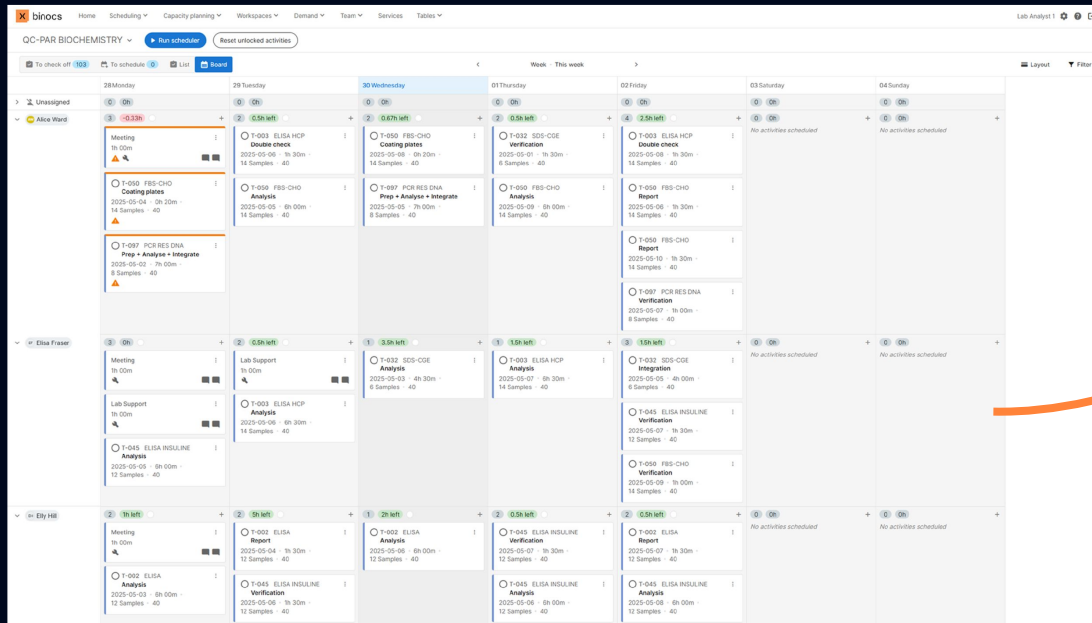


The screenshot displays the Binocs software interface for 'QC-PAR BIOCHEMISTRY'. It features a weekly calendar view from Monday to Sunday. The interface includes a navigation bar with options like 'Home', 'Scheduling', 'Capacity planning', 'Workspaces', 'Demand', 'Team', 'Services', and 'Tables'. Below the navigation bar, there are buttons for 'To check off', 'To schedule', 'List', and 'Board'. The main area shows a grid of tasks for three team members: Alice Ward, Elisa Fraser, and Ely Hill. Each task card includes details such as the task name, date, time, and sample count. For example, Alice Ward has tasks like 'Meeting' and 'T-050 FBS-CHO Coating plates' on Monday. The interface also shows 'Unassigned' tasks and 'No activities scheduled' for some days.

The goal of digitalization

Targets

1 year after implementation



Average QC lead time

▼10 days

Efficiency gains across network

▼32 HC

Binocs implemented over 18 months

across
10
sites globally

covering
>100
QC teams

onboarding
>900
users

Lab
manager
s

Planners

Analysts

Global
process
owner

Global template approach



Owens the templating process and safeguards the global character of the template that drives standardization

How?

Global data definitions

Global IT integration

Global reporting standards

Global configuration options

Global data definitions

Global IT integration

Global reporting standards

Global configuration options

Naming conventions and master data governance

- Common naming conventions and Master Data governance across all sites and labs

Global data definitions

Global IT integration

Global reporting standards

Global configuration options

E2E integration in company IT architecture

- Binocs synced with existing IT infrastructure through seamless integration with SAP QM/EM, LES, MSP Tasks & Investigations and Training platform



Global data definitions

Global IT integration

Global reporting standards

Global configuration options

Common performance management

- Shared and standardized KPIs and reports
- Harmonized with the Global Productive System reporting standards
- Common language with SC
- Directly shared in Tier review meetings

Global data definitions

Global IT integration

Global reporting standards

Global configuration options

Global menu card of configuration options

- Can be turned on/off depending on each team's needs

Dynamic business rules

- Different lab teams each with specific requirements
- Different test types:
 - Release
 - Stability
 - Incoming materials
 - Environmental monitoring
 - Utilities monitoring
 - Microbiology labs

Binocs usage

in past 6 months of the implementation



Binocs usage

in past 6 months of the implementation

>10k

schedule runs

>230k

demand items created

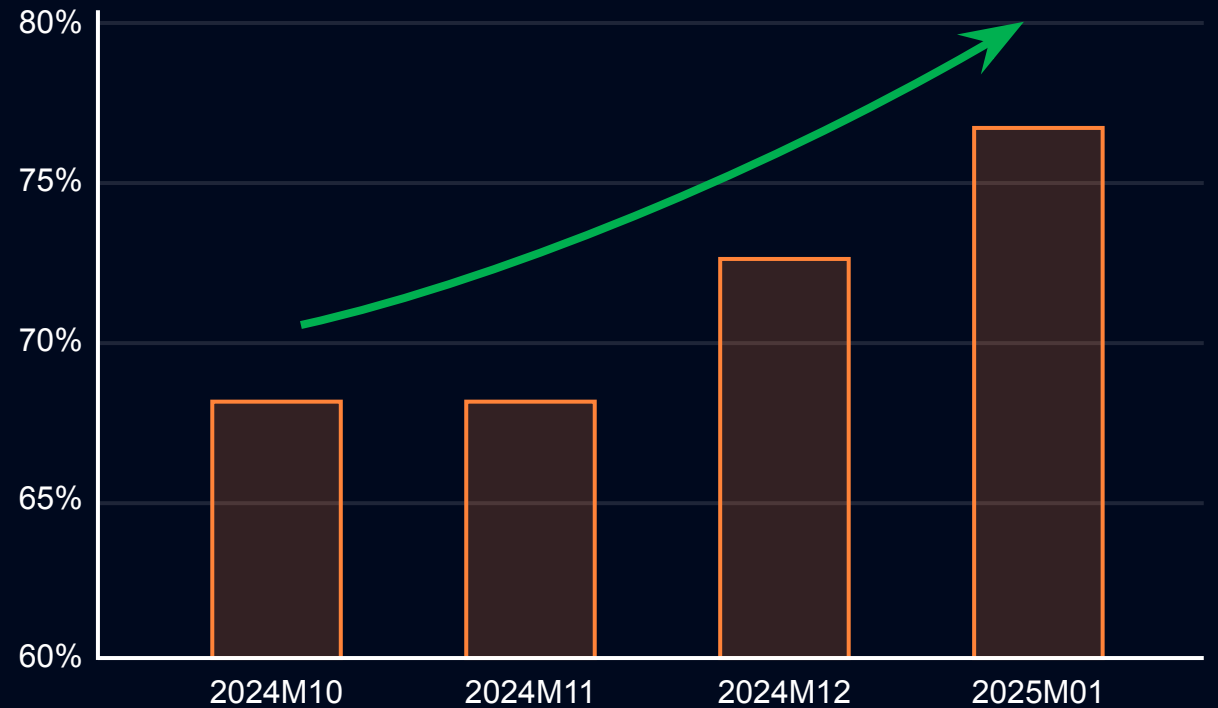
>775k

samples ▶ “authorized”
status in SAP

Performance metrics

Scheduling adherence

In the first months after go-live



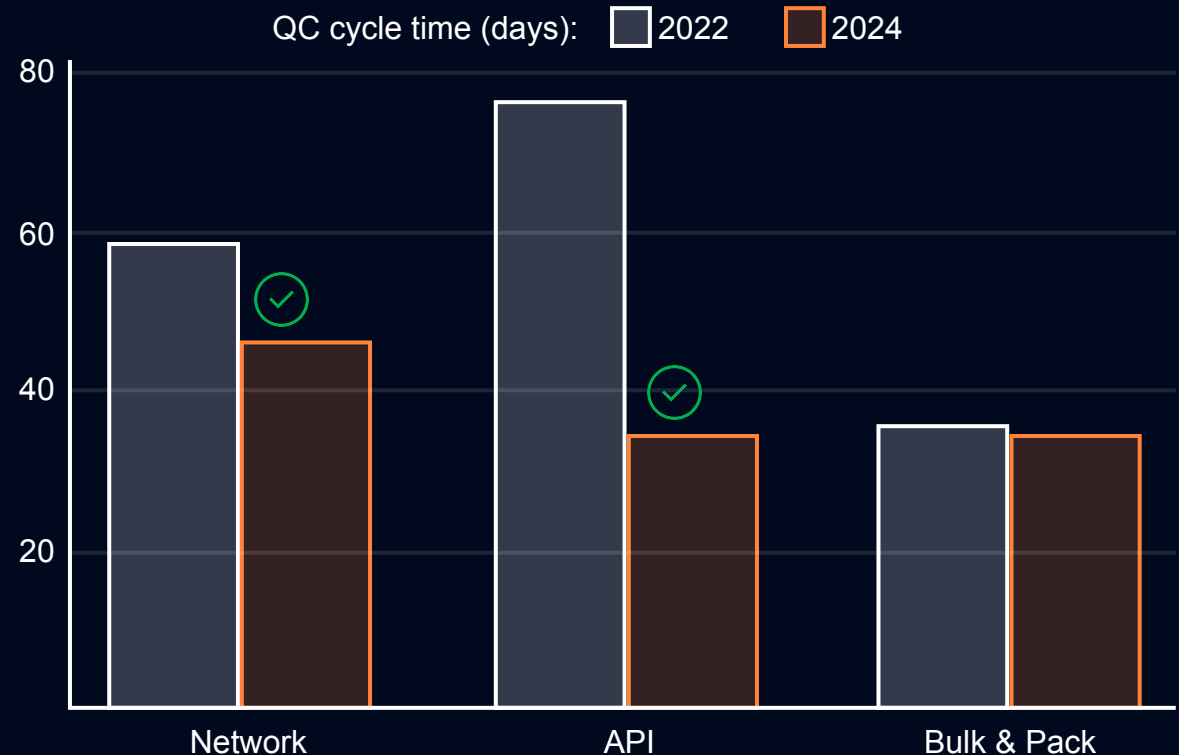
Achievements with Binocs integrated planning and scheduling

Average
QC lead time

▼ **10**
days

Targeted 1 year after implementation

Fully achieved by the end
of the implementation

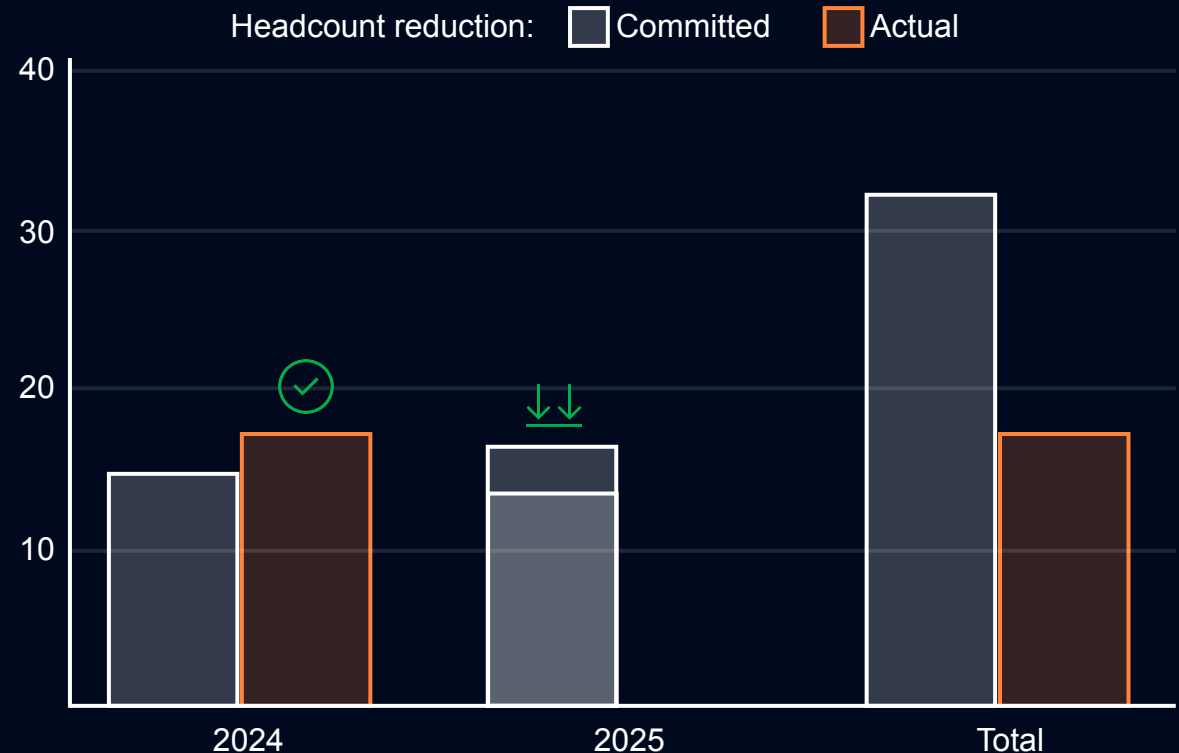


Achievements with Binocs integrated planning and scheduling

Efficiency gains
across network

▼ **32 HC**

- ▼15.5 in 2024
- ▼16.5 in 2025



Future plans for customer

“We work more closely together thanks to Binocs”

1

Deploy Binocs across
pharma network

- Repeat the template approach
 - Implement across 13 sites globally
 - >70 teams
 - >600 analysts

Future plans for customer

“We work more closely together thanks to Binocs”

1

Deploy Binocs across pharma network

- Repeat the template approach
 - Implement across 13 sites globally
 - >70 teams
 - >600 analysts

2

Binocs – OMP handshake integration

- E2E integration with OMP's *Unison Planning*
 - Integrating SC and QC across all planning layers to synchronize the E2E supply chain
 - Pilot project planned for 2026

Future plans for customer

“We work more closely together thanks to Binocs”

1

Deploy Binocs across pharma network

- Repeat the template approach
 - Implement across 13 sites globally
 - >70 teams
 - >600 analysts

2

Binocs – OMP handshake integration

- E2E integration with OMP’s *Unison Planning*
 - Integrating SC and QC across all planning layers to synchronize the E2E supply chain

3

Diagnose QC operations through Binocs data

- Pilot project planned for 2026
- Drive process improvements across QC network
 - Advanced reporting on different levels in the organization
 - Identify bottlenecks and opportunities in the network

Creating value for our customers at every level

X bluecrux

Our consultants go deep to transform our customers' Supply Chain Operating Models

X binocs

Our Binocs technology changes the way QC and CGT are planned across the end-to-end network

X axon

Our Axon technology supports value chain management with AI-powered analytics and decision intelligence

CGT and Advanced Therapies



Network level

Site level

A small selection of our customers

X



A person wearing a white lab coat and a blue hairnet is holding a clear glass vial containing a dark liquid. The person is looking at the vial. The background is blurred, showing other people in a laboratory setting.

Thank you!

www.bluecrux.com/binocs

bluecrux |  binocs™



Sign up for a free demo today and
ask about integration with OMP

Or come visit us at booth

16