

MARS

Tomorrow starts today

AI Transforming the Food Ecosystem

Dr. Abigail Stevenson
Chief Science Officer for Mars

Agenda

History

AI across the supply chain

Use cases transforming the supply chain

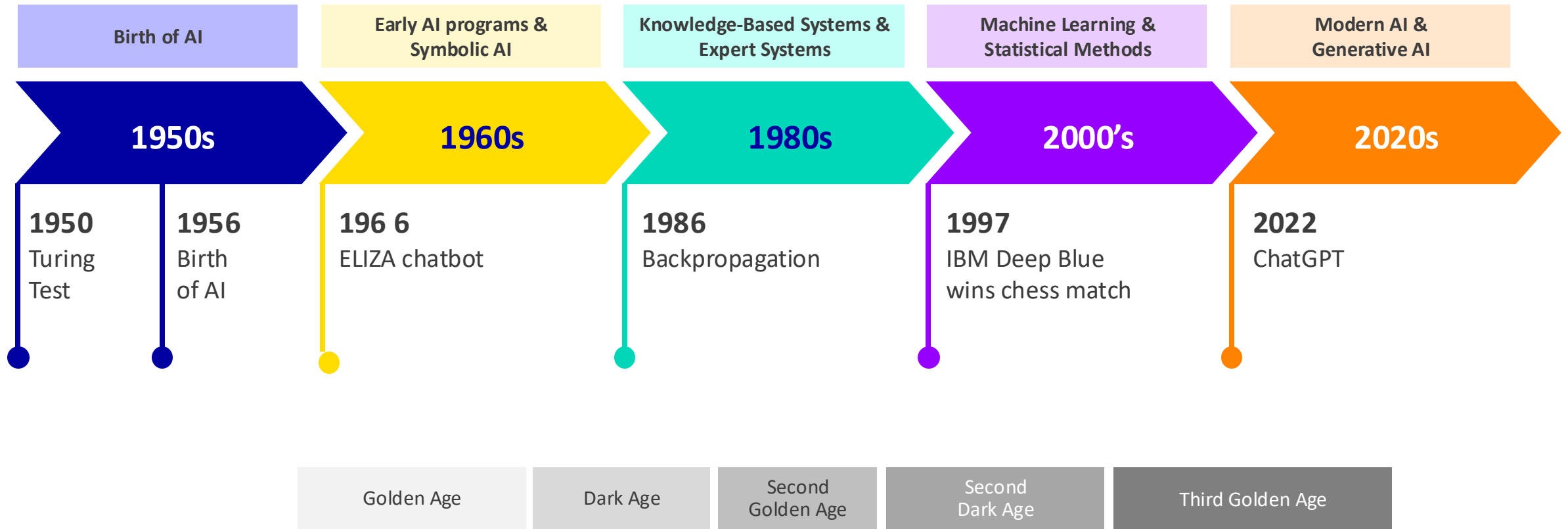
The future

Q&A

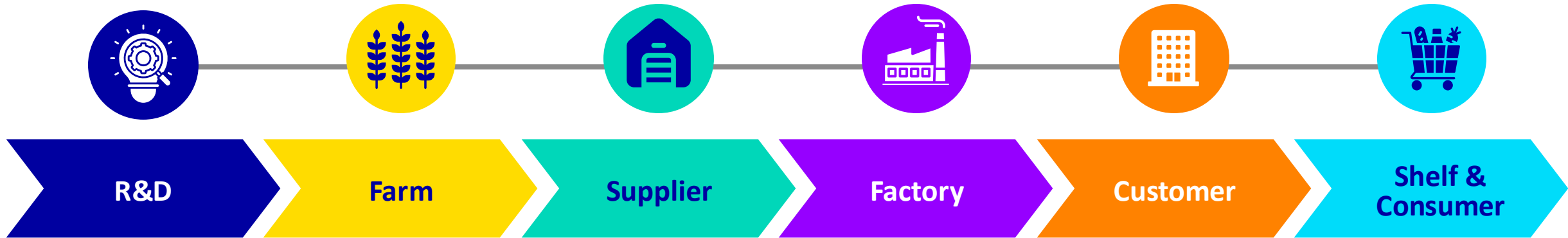
AI transforming food ecosystems



AI is not new



AI across the food supply chain



- AI Science Discovery
- Modelling and simulation

- Precision agriculture
- Automated machinery
- Crop monitoring

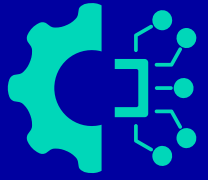
- Supply chain optimization
- Quality control of materials
- Automation of processes

- Smart Robotics
- Predictive maintenance
- Quality control

- Demand forecasting
- Inventory management

- Chatbots, virtual assistants
- Feedback analysis
- Nutritional optimization

Use cases across the food supply chain



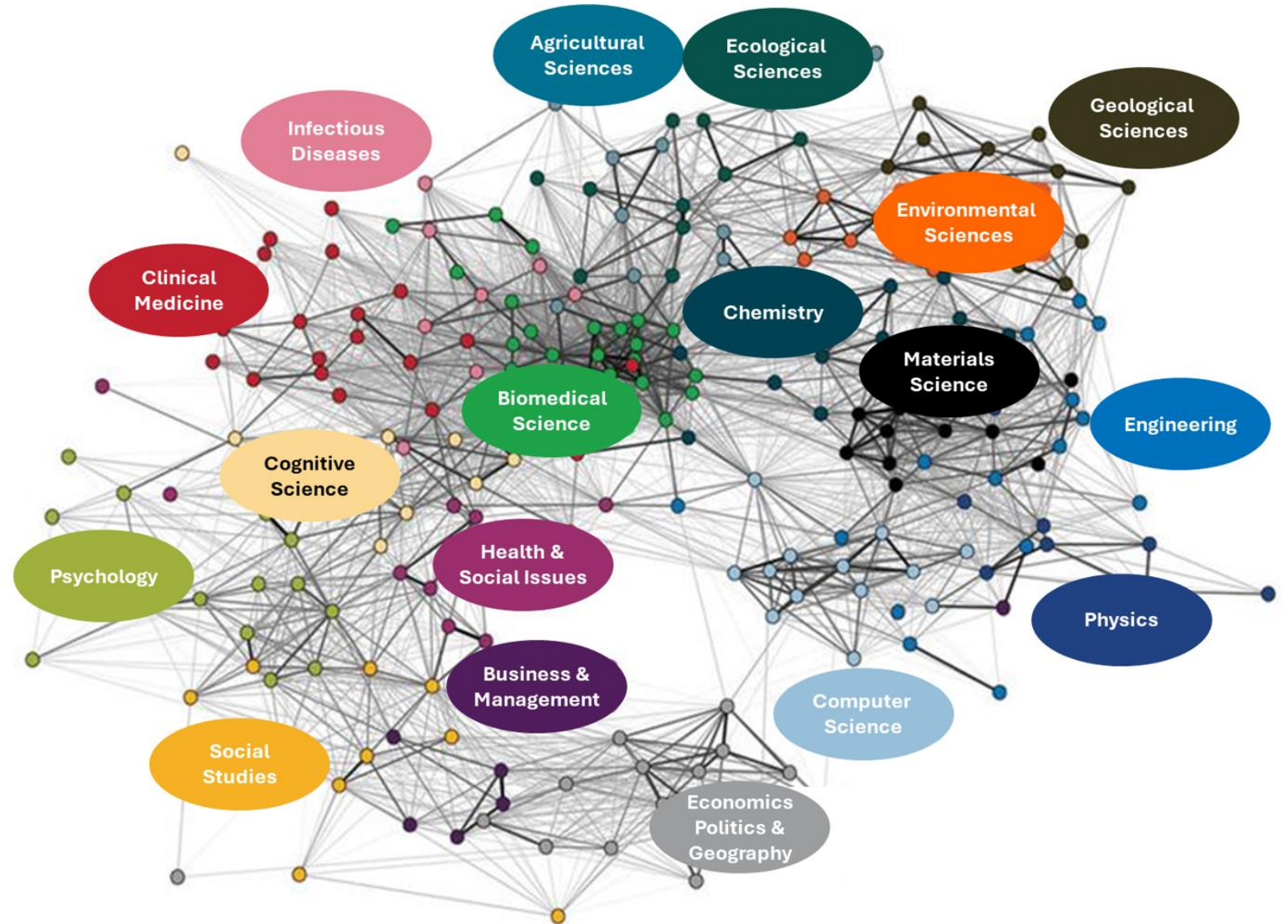
AI-led scientific discovery

In partnership with



MARS

AI research assistant - Predictive Horizon Intelligence (PHI)



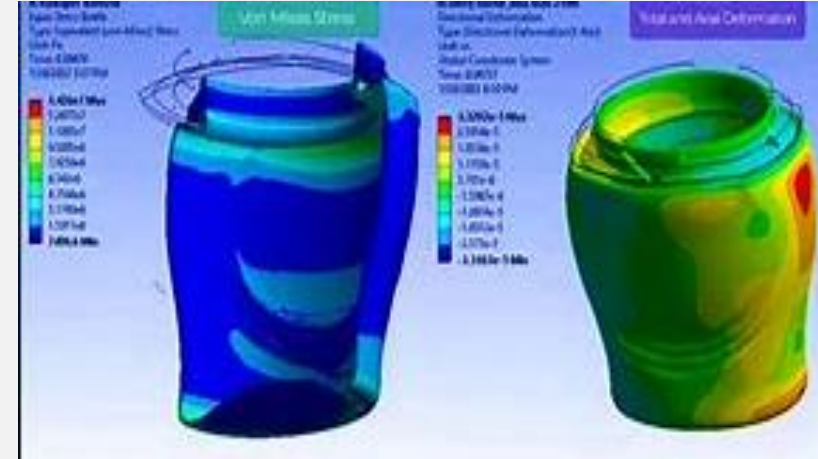


Packaging development

In partnership with



Ansys revolutionize its packaging development process using advance simulation technology



40%

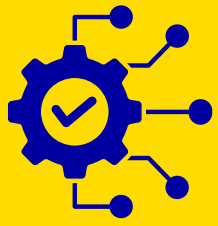
Faster Development through simulation-led packaging design

246

Tons of Plastic Saved by reducing physical testing

12,000+

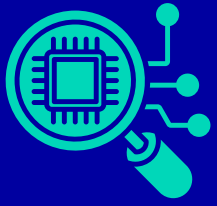
Packages being redesigned for recyclability



Digital twin

**A virtual replica of the chocolate
manufacturing process**





AI-powered predictive maintenance

A machine-learning approach to predictive maintenance, fueled by real time data



The Future

The challenges we face today



Data



Talent +
Capabilities



Responsible Use

The potential of AI and the food ecosystem



Winning with
Consumer



Food of
the Future



Feeding
the planet

Questions





Thank you

[@marsglobal](#)

[linkedin.com/company/mars/](https://www.linkedin.com/company/mars/)

[facebook.com/mars](https://www.facebook.com/mars)

[mars.com](https://www.mars.com)