

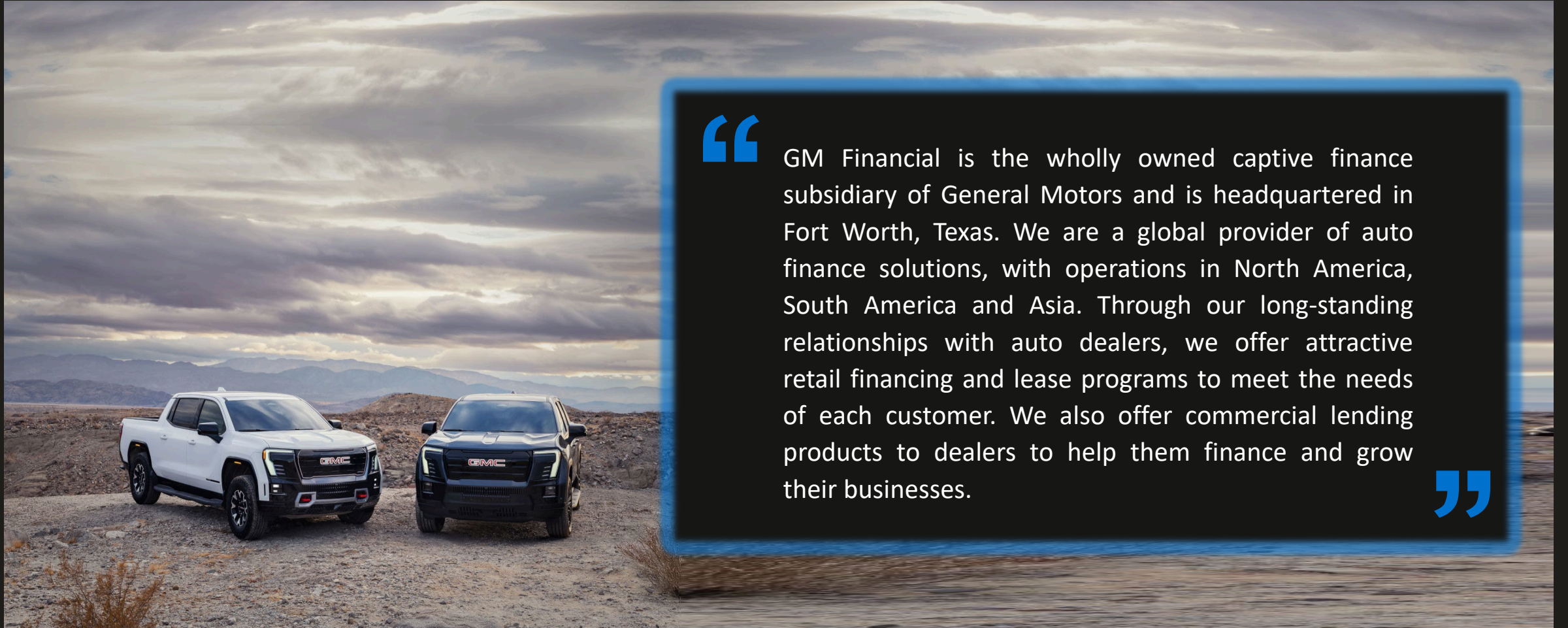


# From Architecture to Execution

*Enabling Scalable Innovation Across the Enterprise*

Yaron Yaniv  
Global Chief Architect  
June 2025





“

GM Financial is the wholly owned captive finance subsidiary of General Motors and is headquartered in Fort Worth, Texas. We are a global provider of auto finance solutions, with operations in North America, South America and Asia. Through our long-standing relationships with auto dealers, we offer attractive retail financing and lease programs to meet the needs of each customer. We also offer commercial lending products to dealers to help them finance and grow their businesses.

”

# Agenda

*Key objectives and the plan for today*

## Driving Business Success



Connect architecture strategy to business execution through outcome-driven frameworks

## Fueling Real-time Decisions



Enable cross-platform integration and data flow to support real-time decision-making

## Accelerating Delivery



Design scalable architectures that accelerates agile product delivery and innovation

## Breaking Down Silos



Foster collaboration between architecture, engineering, and business teams to remove silos and improve time-to-value

# Driving Business Success

*Deliver value to our customers while obsessing over customer experience by focusing on these three tenants*



**Resilient and responsive in a dynamic, uncertain business landscape**



**Unlocking new value streams through "architectural creativity"**



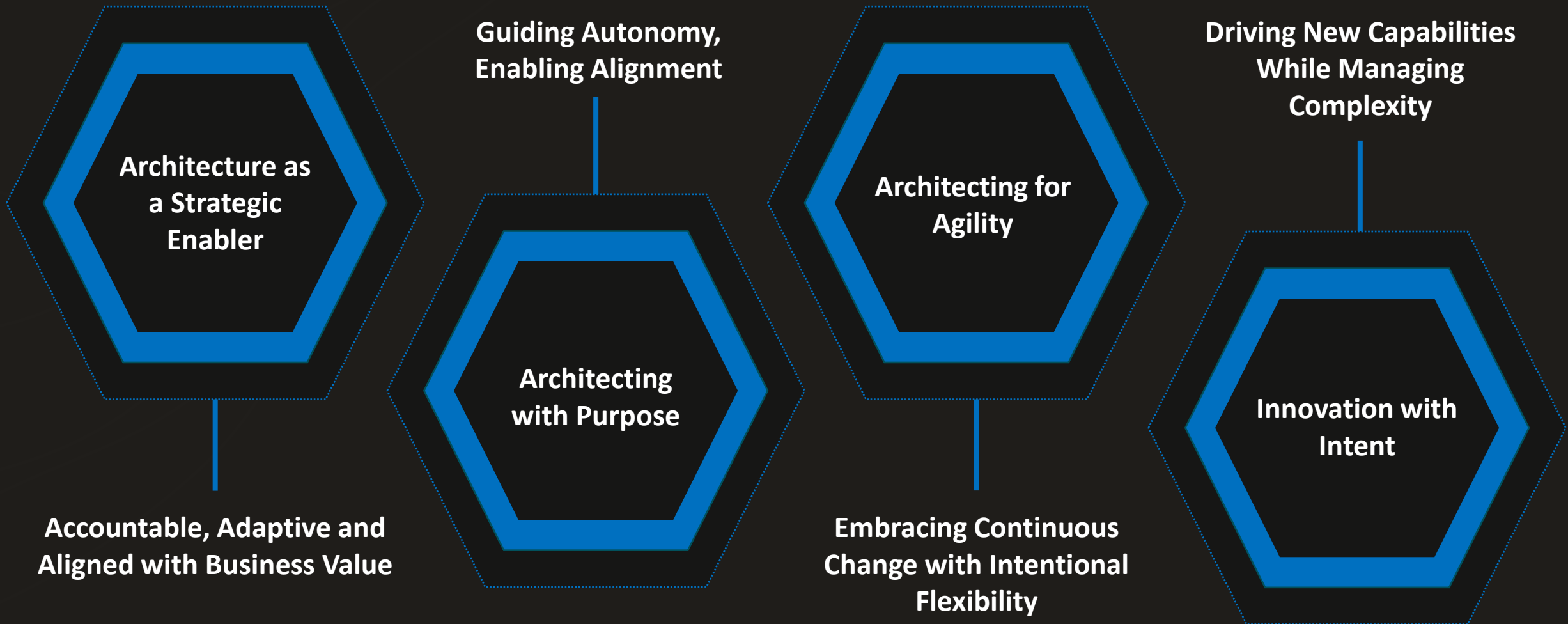
**Adaptive and resilient to dynamic user patterns and system-scale complexity**



**Build or adopt a framework that aligns Architecture with Business priorities**

# Driving Business Success

*Connect architecture strategy to business execution through outcome-driven frameworks*



# Fueling Real-time Decisions

*Enable cross-platform integration and data flow to support real-time decision-making*



## Real-Time Data Flow Enablers

- ✓ Streaming Platforms
- ✓ Edge Computing
- ✓ AI/ML Integration



## Business Impact

- ✓ Faster Decision-Making
- ✓ Improved Customer Experience
- ✓ Operational Efficiency



## Security & Governance

- ✓ Zero Trust Architecture
- ✓ Data Lineage & Observability
- ✓ Encryption & Tokenization



## Integration

- ✓ Unified APIs & Middleware
- ✓ Event-Driven Architecture
- ✓ Data Fabric & Mesh

# Accelerating Delivery

*Design scalable architectures that accelerates agile product delivery and innovation*



## CI/CD

- Streamline code integration, testing, and deployment to boost speed and reliability
- Empower rapid iteration and delivery, fueling continuous innovation at scale



## OBSERVABILITY & FEEDBACK LOOPS

- Create more measurable systems and detectable issues early
- Drive continuous learning and rapid improvement



## API

- Push seamless integration and faster digital delivery with API-first design
- Decouples teams, allowing parallel innovation across front and back ends



## MODULAR DESIGN

- Support independent innovation and deployment
- Enable parallel development, quicker iterations, and scalable component growth



## CLOUD NATIVE INFRASTRUCTURE

- Produce scalable, resilient, and portable systems
- Optimize resource use and shift focus from infrastructure to business value



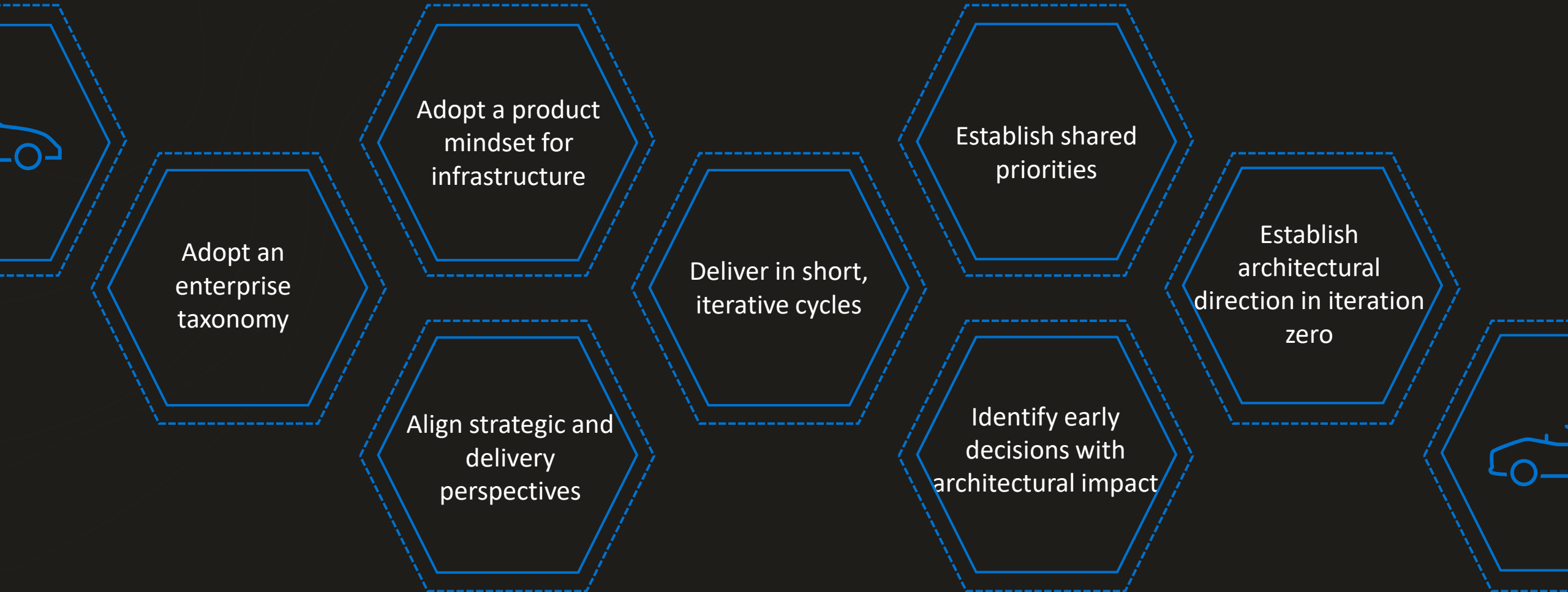
## MICROSERVICES ARCHITECTURE

- Scale independently, enhancing resilience and deployment speed
- Enable tech diversity and service-level innovation through decoupled release cycles



# Breaking Down Silos

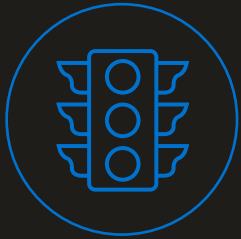
*Foster collaboration between architecture, engineering, and business teams to remove silos and improve time-to-value*



# Bringing it to Life: Innovation Lab

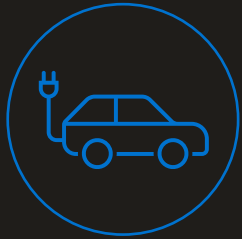
*Building a test bed for rapid experimentation*

Slow to dispense environment,  
Hardening takes a long time



Create  
“experimentation environments”

Limited ability to try out new things



Encourage innovation through  
hackathons and learnings

Internal processes and institutional guardrails, “One size fits all”



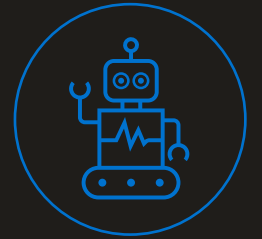
FastTrack,  
lightweight process

ROI driven decisions



Use t-shirt sizing,  
high-beta ideas acceptable

Org incentives align towards delivery of well-known, well-defined results



Invest in automation



**Thank You**