



The Cloud Advantage: How CIOs Are Driving Migration and Modernization on AWS



S P E A K E R

Christopher Belford

Senior Executive

christopher.belford@epiuse.com

Navigate Your Cloud Migration Journey with Confidence



Experienced

- 40+ Years
- 40+ Countries
- 4000+ Employees

Trusted

- 5000+ Global Clients
- 2,500+ SAP implementations



Innovative

- Custom Applications
- Low Code
- Data Science and AI
- Specialized Integrations

Knowledgeable

- AWS Premier Partner** with over 100 AWS certifications and 4 competencies



- SAP Services Competency
- Managed Service Provider
- Retail Services Competency
- Public Sector Solution Provider
- Well-Architected Partner Program
- Amazon EC2 for Windows Server Delivery
- AWS Microsoft Workloads Services Competency
- Migration and Modernization Services Competency

Purpose

1% of our revenue is applied to the protection and preservation of at-risk elephants and rhinos, through a strategy that is based on poverty alleviation.



The Cloud Advantage:

How CIOs Are Driving Migration and Modernization on AWS

For many CIOs, legacy infrastructure is becoming a critical barrier to innovation, cost control, and operational resilience. Yet large-scale migration efforts often stall due to complexity, risk, and internal resistance.

In this session, EPI-USE and AWS will share proven, real-world strategies to modernize enterprise environments through secure, low-disruption cloud migration. Attendees will gain a clear framework to move forward—regardless of where they are in their cloud journey.

This executive session will cover:

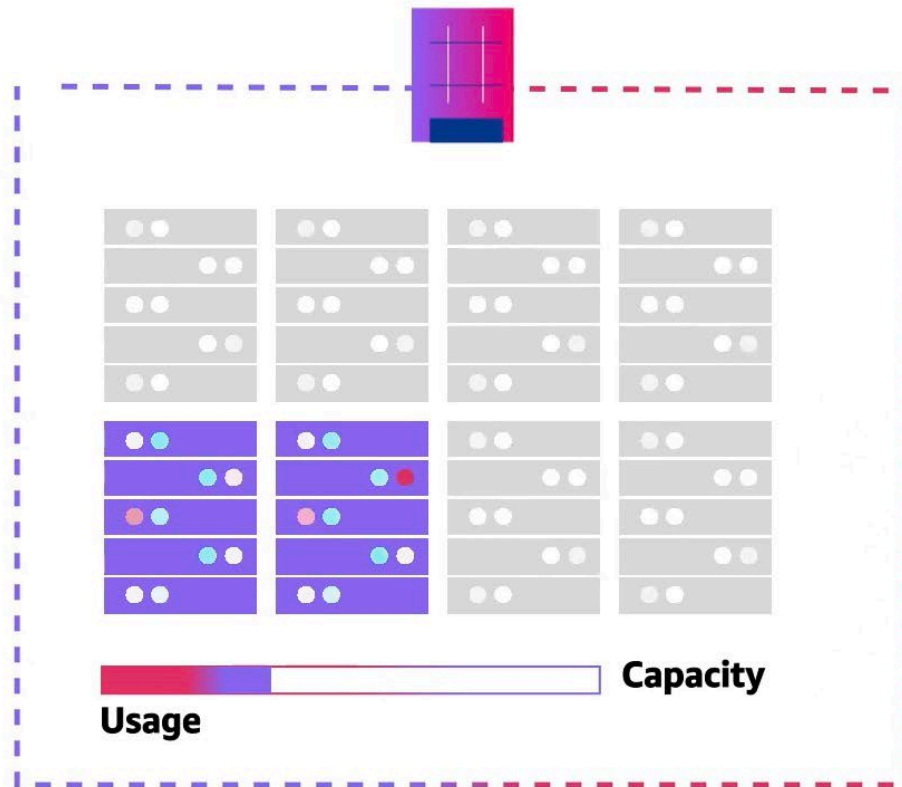
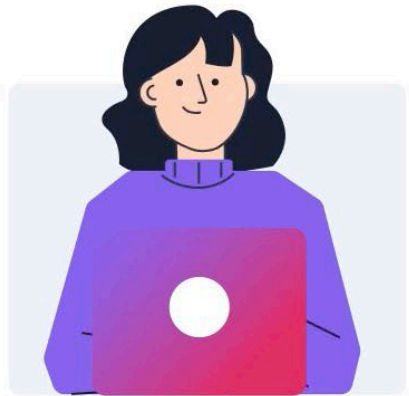
- Why legacy systems are limiting agility and business performance.
- Common pitfalls and risks in cloud migration—and how to avoid them.
- EPI-USE's SHIP™ framework for successful cloud migration and modernization.
- AWS programs that reduce migration cost, accelerate execution, and support long-term scalability.

Cloud Computing

"The on-demand delivery of IT Resources over the internet with pay as you go pricing"

Change in fundamental approach

On-Premise

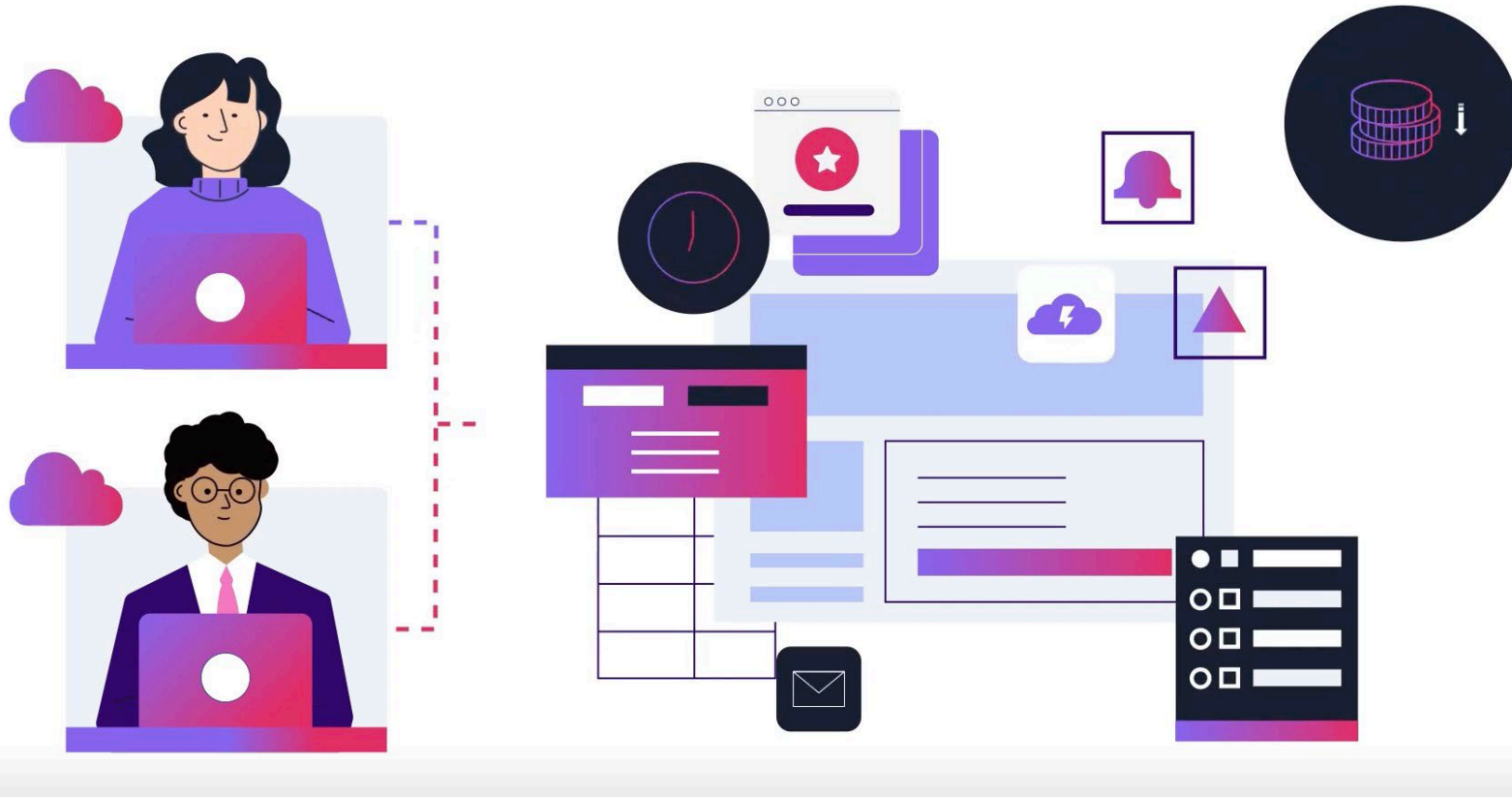


Projects, innovation and change have to include a large management effort of undifferentiated services to enable any delivery :

- *Project approval and financial planning for capex.*
- *Hardware procurement negotiation*
- *Lead time.*
- *Rack and Stack, redundant power and cooling.*
- *Network, O/S and foundation software installation and readiness.*
- *Non-production environments.*
- *Landscape Configuration Management.*
- *3-5 year refresh cycles.*

Change in fundamental approach

Cloud

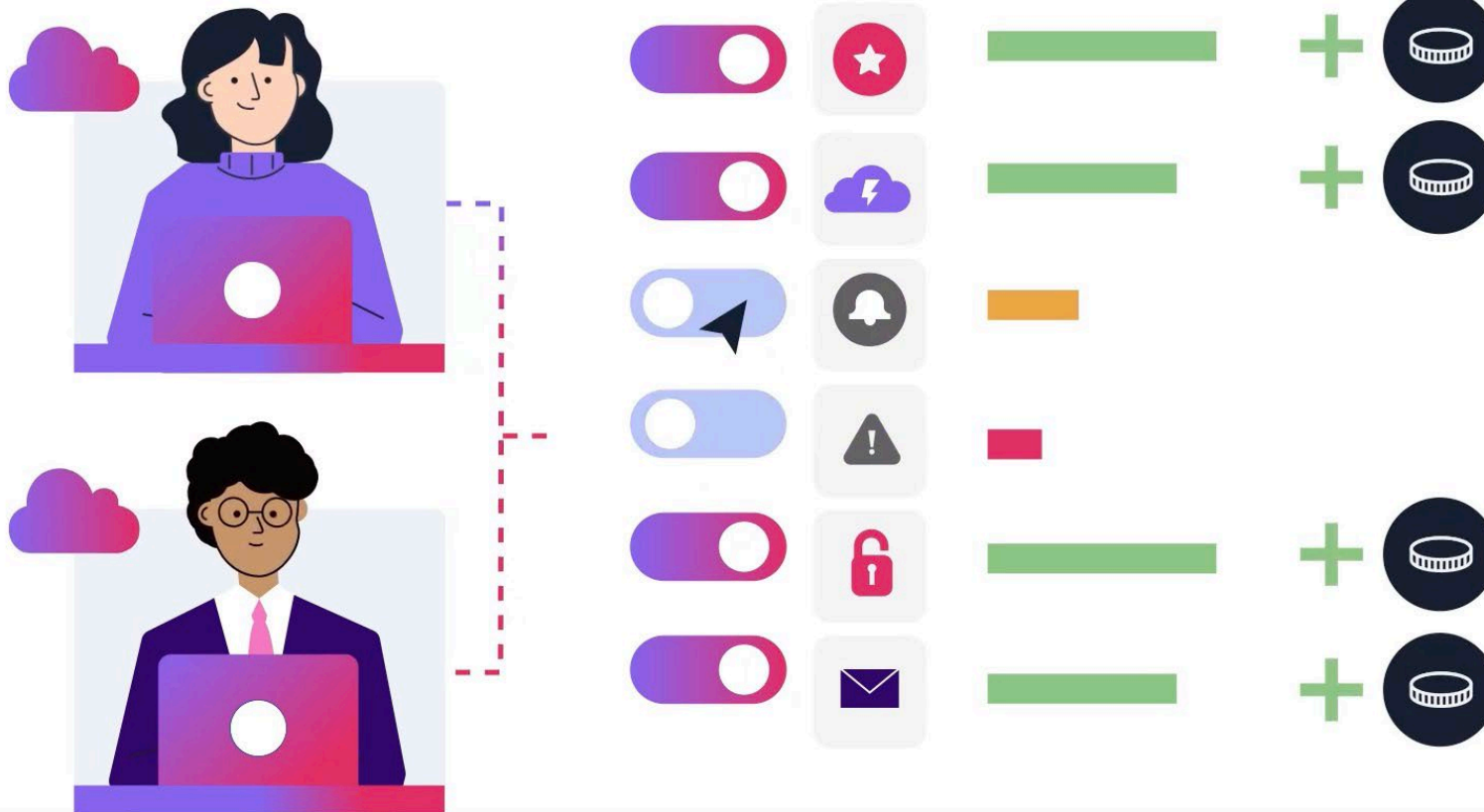


Transformation to a pay per use model with unlimited availability of services without notice or commitment:

- *Elastic infrastructure.*
- *Up-Scale and Down-Scale automatically.*
- *Terraform environments in minutes.*
- *High Availability and redundancy out of the box.*
- *Plug and Play computing services with minimal configuration required.*
- *Global infrastructure, available and uniformly deployable.*
- *Economies of scale and decrease in IT spend.*

Change in fundamental approach

Cloud Powered Transformation

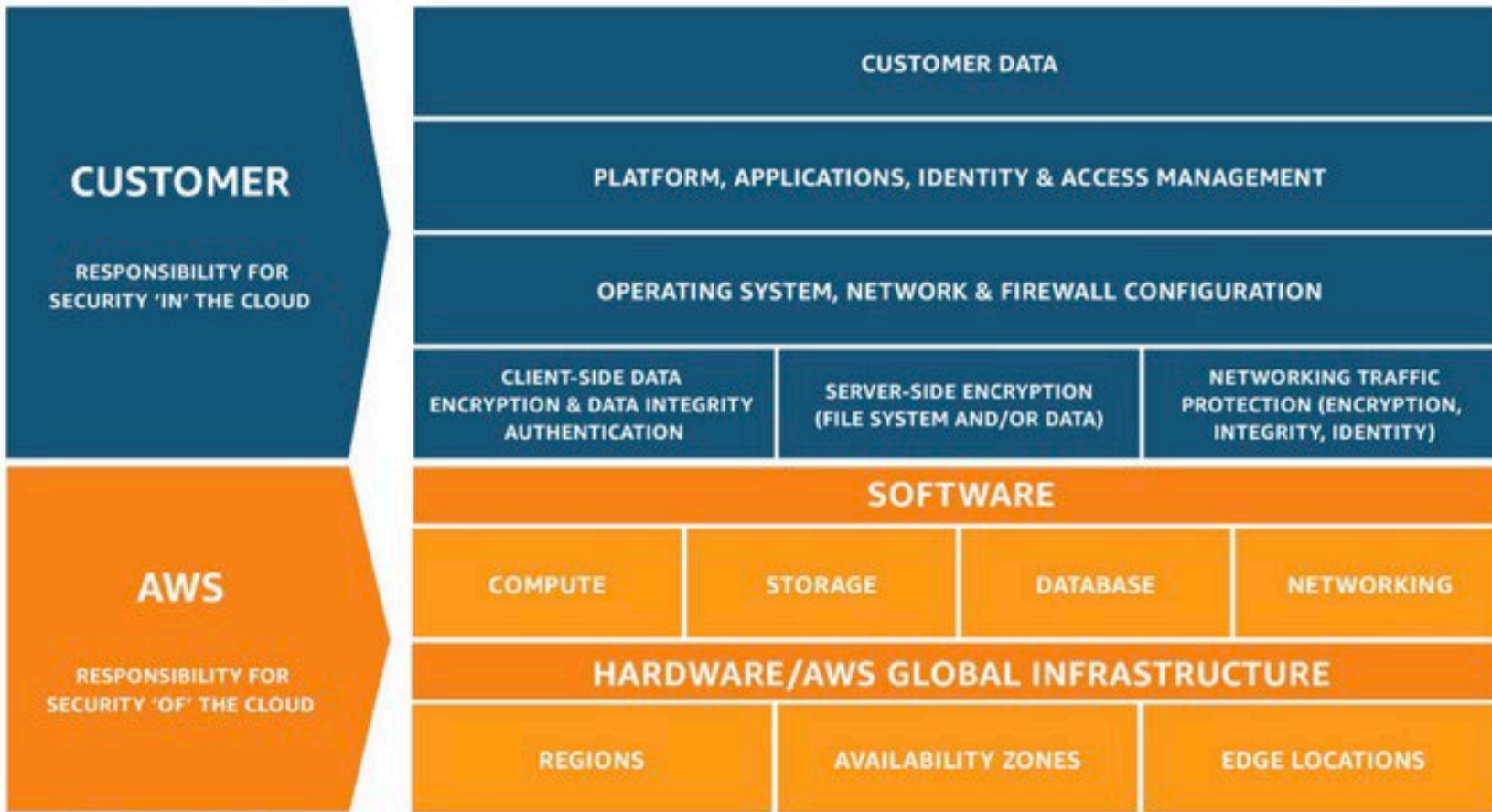


Move investment away from managing data centers to pure differentiating application transformation and modernization

End experiments that are not working and increase investment in those that are.

It is considerably easier to be agile and bold when you are no longer afraid of the consequences of failure.

AWS Shared Responsibility model



Customer responsibility "Security in the Cloud" – Customer responsibility will be determined by the AWS Cloud services that a customer selects. This determines the amount of configuration work the customer must perform as part of their security responsibilities. For example, a service such as Amazon Elastic Compute Cloud (Amazon EC2) is categorized as Infrastructure as a Service (IaaS) and, as such, requires the customer to perform all of the necessary security configuration and management tasks.

AWS responsibility "Security of the Cloud" - AWS is responsible for protecting the infrastructure that runs all of the services offered in the AWS Cloud. This infrastructure is composed of the hardware, software, networking, and facilities that run AWS Cloud services.

AWS Audit Manager



AWS Audit Manager

[ACSC Essential Eight](#)

[ACSC ISM](#)

[AWS Audit Manager Sample Framework](#)

[AWS Control Tower Guardrails](#)

[AWS Generative AI Best Practices](#)

[AWS License Manager](#)

[AWS Foundational Security Best Practices](#)

[AWS Operational Best Practices](#)

[AWS Well Architected Framework WAF v10](#)

[CCCS Medium Cloud Control Profile](#)

[CIS AWS Benchmark v.1.2](#)

[CIS AWS Benchmark v.1.3](#)

[CIS AWS Benchmark v.1.4](#)

[CIS Controls v7.1 IG1](#)

[CIS Critical Security Controls version 8.0, IG1](#)

[FedRAMP Security Baseline Controls r4](#)

[GDPR 2016](#)

[GLBA](#)

[Title 21 CFR Part 11](#)

[EU GMP Annex 11, v1](#)

[HIPAA Security Rule: Feb 2003](#)

[HIPAA Omnibus Final Rule](#)

[ISO/IEC 27001:2013](#)

[NIST SP 800-53 R5](#)

[NIST CSF v1.1](#)

[NIST SP 800-171 R2](#)

[PCI DSS v3.2.1](#)

[PCI DSS v4](#)

[SSAE-18 SOC 2](#)

The Challenge of Cloud Migration

Why organizations need clarity



Cost Uncertainty

"How much will our workloads cost in AWS?"



Complex Infrastructure

"Which workloads should move first?"



Licensing Optimization

"Are we overpaying for licenses?"

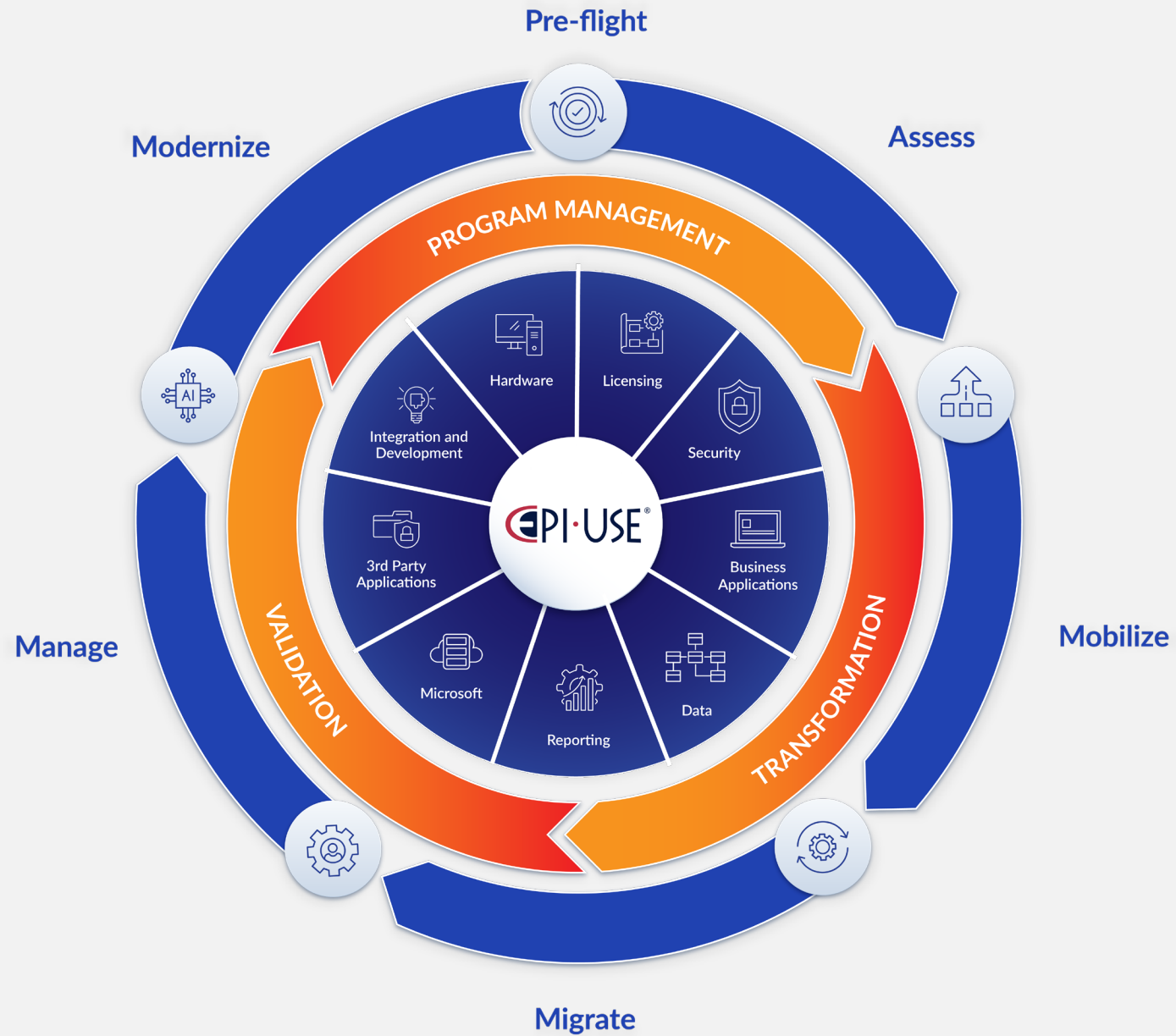


Risk Management

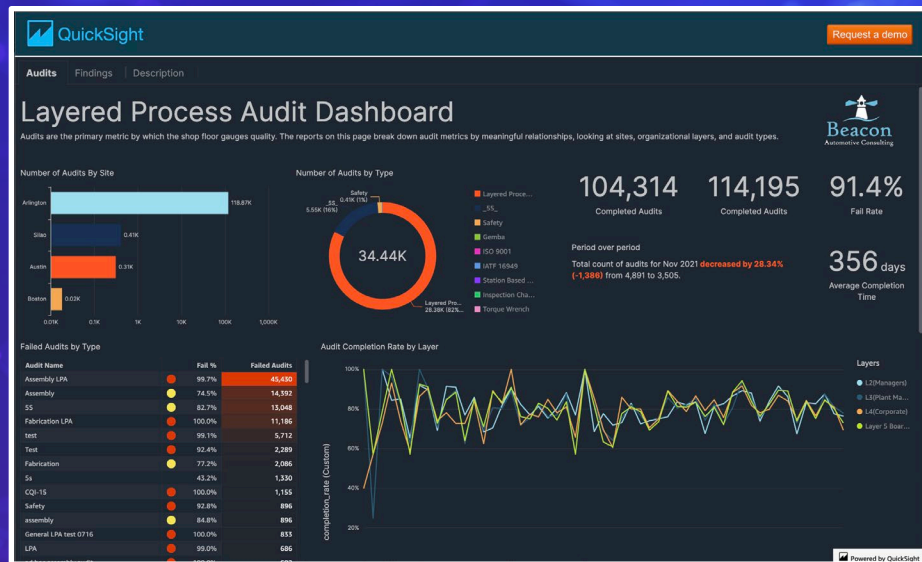
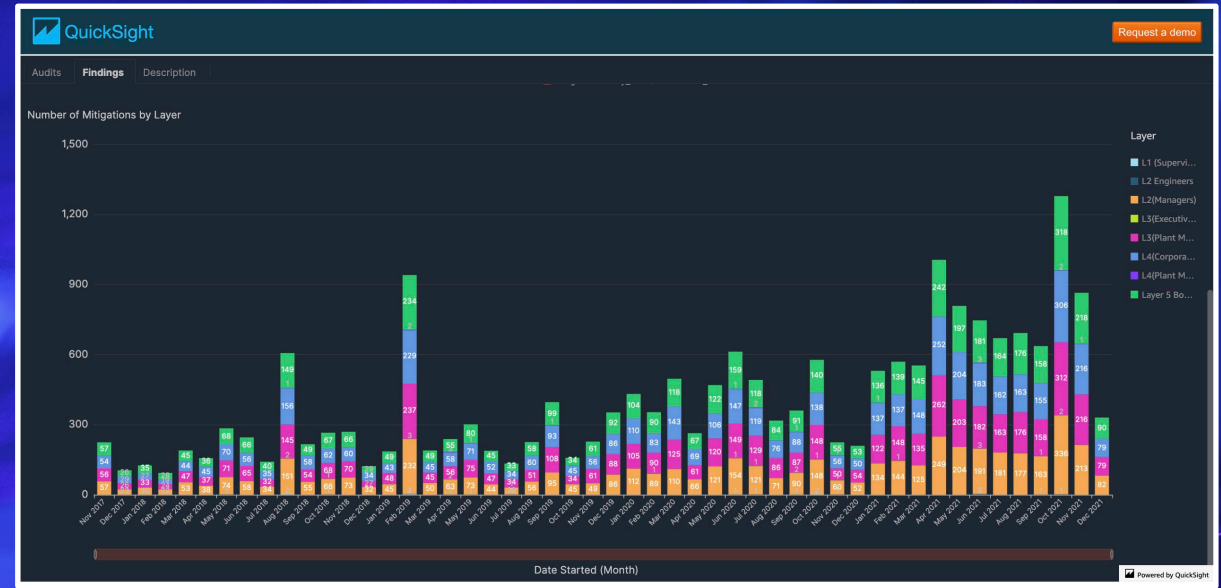
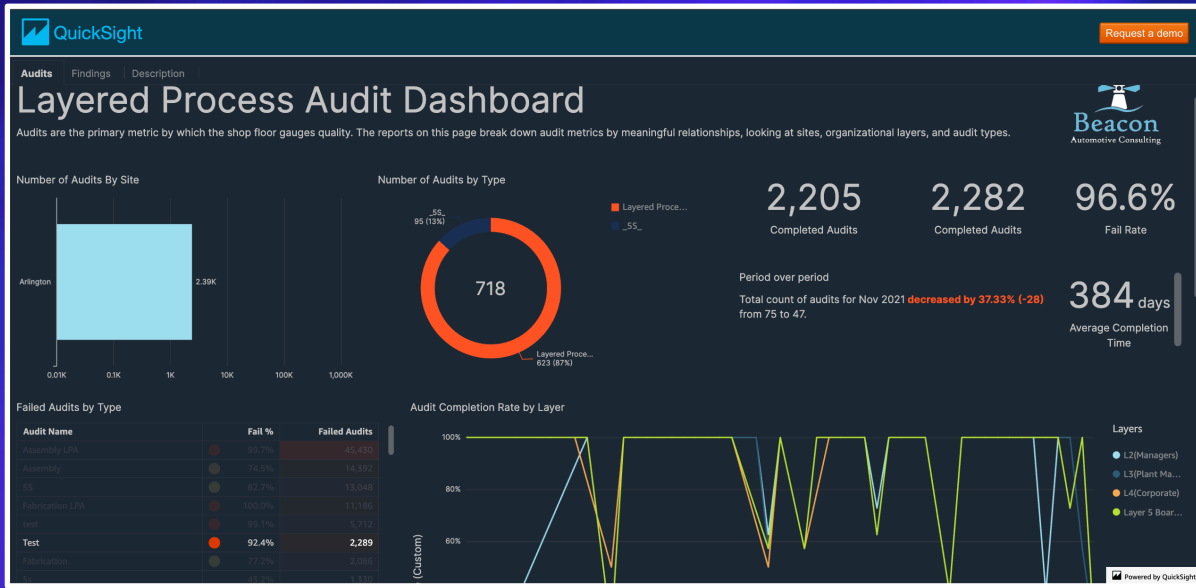
"How do we avoid migration pitfalls?"

"...managing cloud expenses has emerged as a more pressing challenge than security, highlighting an intensified focus...optimizing cloud costs and enhancing efficiency."

FLEXERA 2024 STATE OF THE CLOUD REPORT



Amazon QuickSight



Amazon QuickSight



Create and share dashboards that scale to hundreds of thousands of users on any device

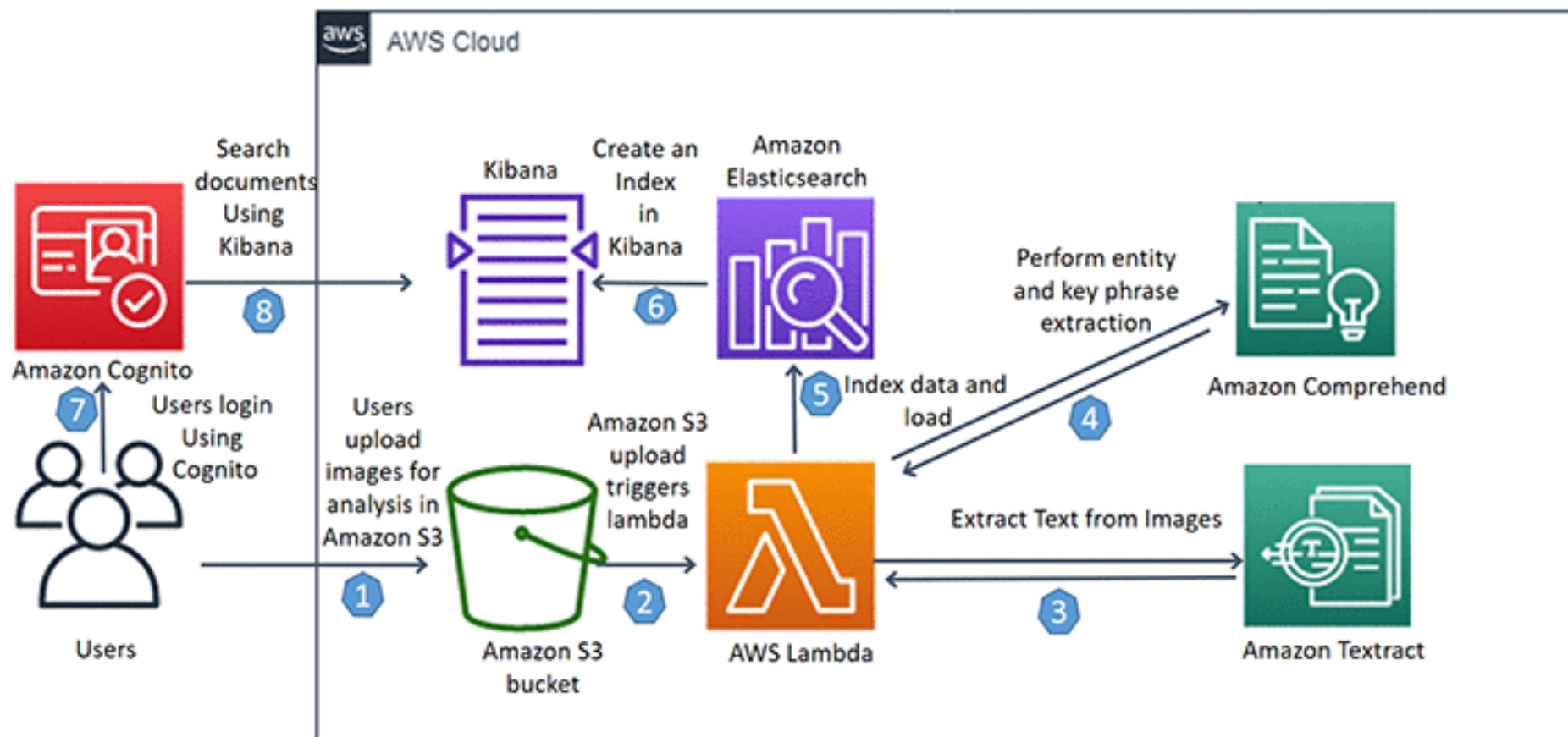
Amazon QuickSight is a cloud-native, fully managed business intelligence (BI) service by AWS that enables users to create interactive dashboards and visualizations to gain insights from data quickly and easily. It connects to various data sources including AWS services, third-party databases, SaaS applications, and files, combining them into a single dashboard for analysis.

Key features include:

- Machine learning-powered insights such as anomaly detection and forecasting.
- Natural language query capability (Amazon Q) allowing users to ask questions in plain English and get instant insights.
- Scalability from a few users to thousands without infrastructure management.
- Secure access with enterprise-grade security, role-based access, and multi-device support including mobile.
- Embedded analytics for integrating dashboards into applications and portals.
- Usage-based pricing with pay-per-session, reducing upfront costs.
- It replaces traditional on-premises BI tools with a cost-effective, fast, and easy-to-use cloud solution that supports real-time data exploration and decision-making.

Amazon QuickSight is a scalable, secure, and intelligent BI platform designed to help organizations visualize and analyze data efficiently to drive better business decisions.

Amazon Textract



Amazon Textract



Automatically extract printed text, handwriting, layout elements, and data from any document

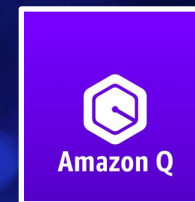
Amazon Textract is a machine learning (ML) service from Amazon Web Services (AWS) designed to automatically extract text, handwriting, layout elements, and data from scanned documents and images. Unlike traditional optical character recognition (OCR) solutions, which often produce unstructured text dumps, Amazon Textract goes further by identifying, understanding, and extracting structured data from complex layouts such as forms and tables.

Key capabilities of Amazon Textract include:

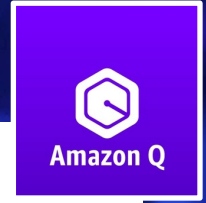
- Text and Handwriting Extraction: Detects both printed and handwritten text in a variety of documents, including financial reports, medical records, and tax forms.
- Form and Table Extraction: Recognizes key-value pairs in forms (e.g., "First Name: John") and preserves the structure of tables, making it easier to import data into databases or applications.
- Layout Analysis: Extracts layout elements such as paragraphs, titles, lists, headers, and footers, providing context to the extracted data.
- Query-based Extraction: Allows users to specify what information they need from a document by asking natural language questions (e.g., "What is the customer name?"), and returns the relevant data without requiring knowledge of the document's structure.
- Signature Detection: Identifies handwritten and electronic signatures on documents, useful for legal and financial workflows.
- Customization: Offers custom queries and adapters to improve extraction accuracy for specific business needs.
- Scalability and Integration: Easily integrates into applications via APIs, scales to process millions of documents, and supports both synchronous and asynchronous processing for single or multipage documents.

Amazon Textract is widely used in industries such as financial services, healthcare, and the public sector, where it helps automate data capture, reduce manual processing, and accelerate decision-making. Users pay only for the documents they process, with no minimum fees or upfront commitments.

Amazon Q – Generative AI Assistant



Amazon Q – Generative AI Assistant



The most capable generative AI-powered assistant for accelerating software development and leveraging companies' internal data

Amazon Q is a generative AI-powered assistant developed by Amazon for enterprise use. It is designed to help organizations and their employees—including developers, business analysts, customer service agents, and supply chain professionals—work more efficiently by providing intelligent assistance across a wide range of tasks.

Key Features and Capabilities

For Developers: Amazon Q Developer assists with coding, testing, upgrading, troubleshooting, and security scanning. It integrates with AWS environments and can provide code completions, generate new code, debug, and offer best practices for AWS applications.

For Business Users: Amazon Q Business enables users to find information, gain insights, and take action by connecting to enterprise data repositories. It can answer complex questions, summarize documents, analyze trends, and automate workflows. Users can interact with Amazon Q through a web-based interface or within applications like Slack, Microsoft Teams, and Outlook.

For Customer Service and Supply Chain: Amazon Q is integrated with Amazon Connect (for customer service) and AWS Supply Chain, providing real-time, personalized responses, operational insights, and recommended actions based on customer or supply chain data.

Customization and Security: Amazon Q can be tailored to your business by connecting to various data sources (AWS, Microsoft 365, GitHub, Salesforce, etc.), and it prioritizes security and privacy, ensuring customer content is not used for model training.

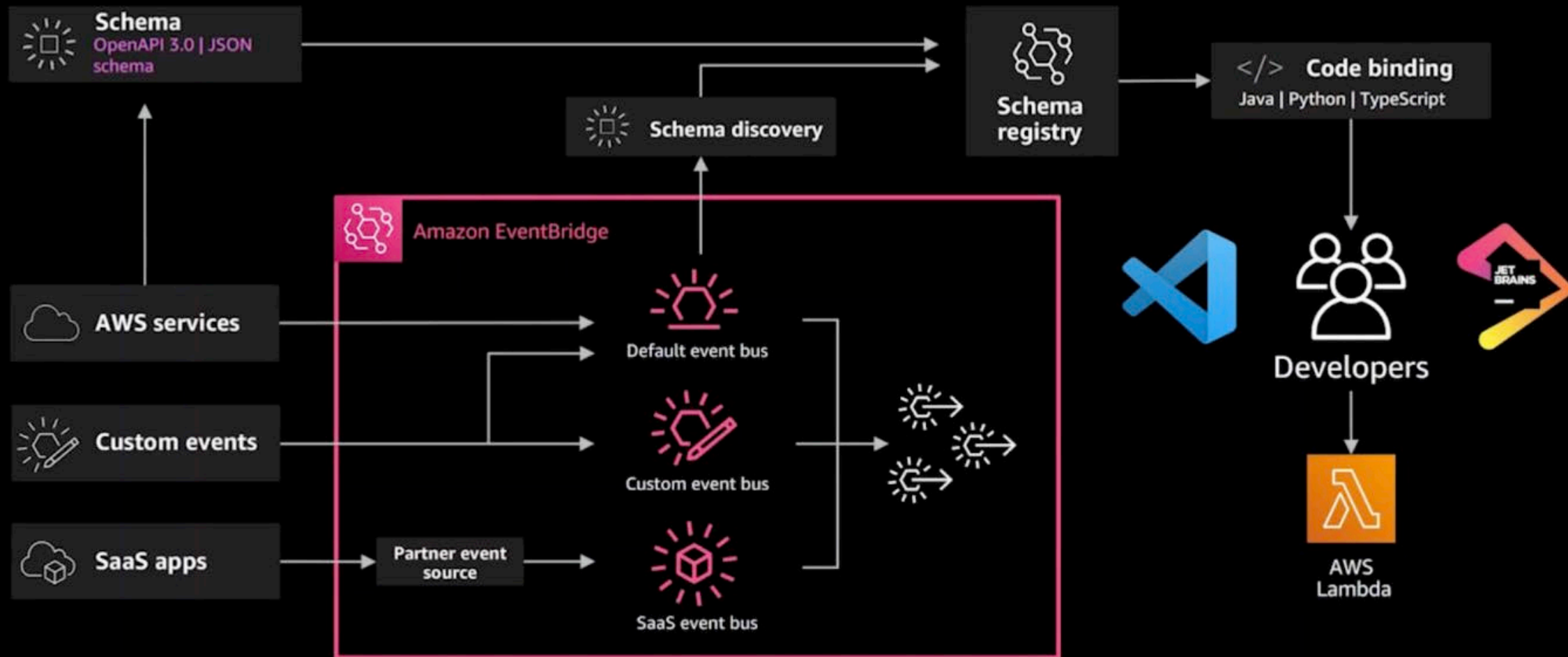
Automation and App Creation: With Amazon Q Apps (in preview), users can create lightweight apps to automate content creation, workflows, and tasks directly from natural language descriptions.

How It Works

Amazon Q uses a combination of Amazon Titan and GPT-based generative AI technology, leveraging the Amazon Bedrock repository of foundational models. It can be accessed through the AWS management console, web browsers, or integrated into popular business applications. Amazon Q is positioned as a business-focused AI assistant that streamlines workflows, accelerates decision-making, and enhances productivity across organizations

Amazon EventBridge architecture

AMAZON EVENTBRIDGE SCHEMA REGISTRY



Amazon EventBridge

Build event-driven applications at scale across AWS, existing systems, or SaaS applications



**Amazon
EventBridge**

Amazon EventBridge is a serverless service designed to facilitate event-driven architectures by connecting and routing events from various sources—such as AWS services, custom applications, and third-party SaaS applications—to their intended targets efficiently and at scale¹²³. It enables asynchronous communication between application components, allowing them to remain loosely coupled, which boosts agility, scalability, and reliability in software systems.

Key Features and Components

Event Buses: Act as routers that receive events and deliver them to multiple targets. Event buses can filter, transform, and route events from many sources to many targets.

Pipes: Designed for point-to-point integrations, pipes receive events from a single source, process them, and deliver them to a single target. They can perform advanced transformations and enrichment of events before delivery.

Scheduler: Allows users to create, trigger, and manage millions of events and tasks based on schedules, supporting reminders, delayed actions, and prompts.

Schema Registry: Helps manage and discover event schemas, making it easier to develop and maintain applications by providing code bindings for various programming languages.

Event Archive and Replay: Offers capabilities to archive events and replay them as needed, which is useful for debugging or recovering from failures.

Discover how W.H.A.L.E. Assessment illuminates your way



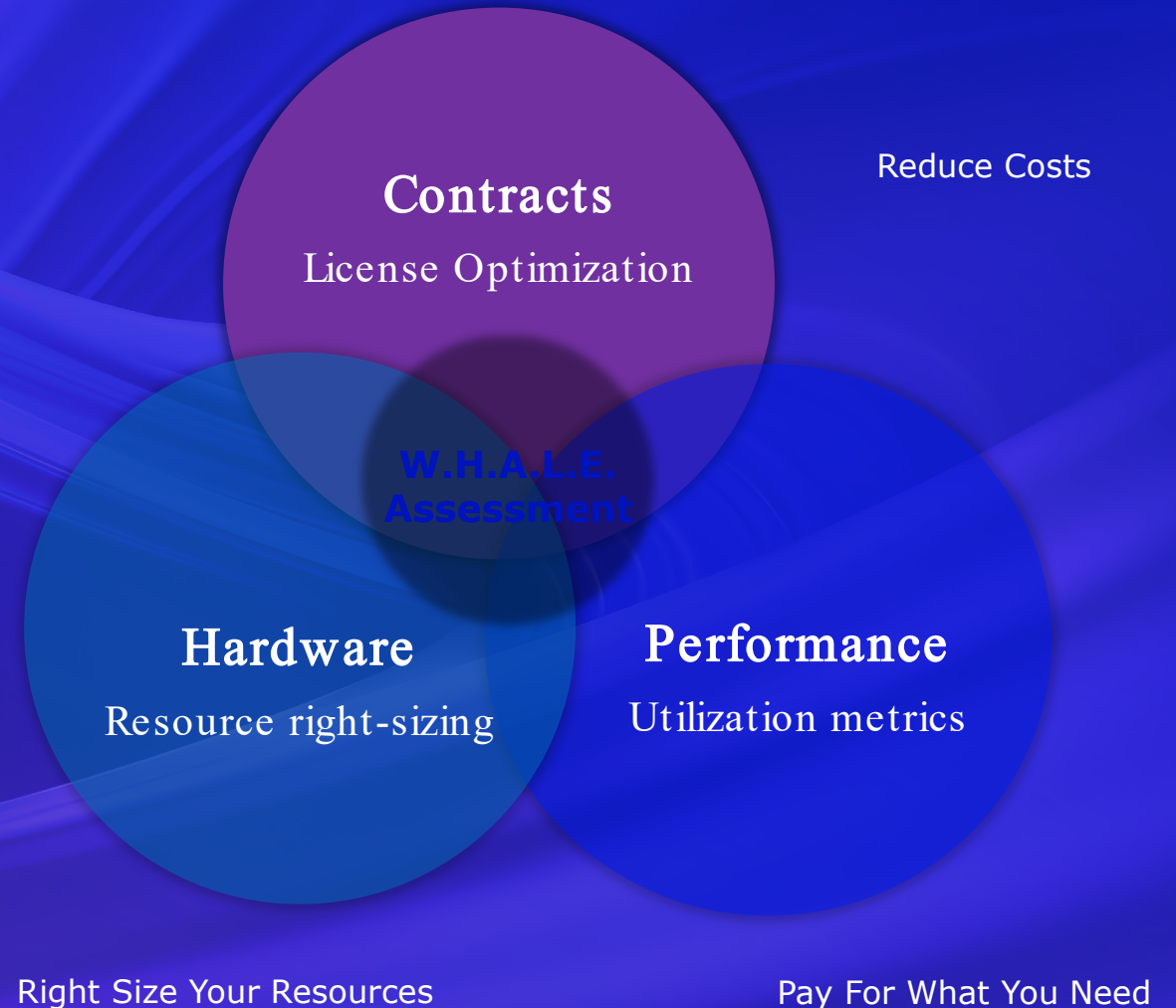
What is the WHALE Assessment?

Workloads Holistic Assessment and Licensing Evaluation

Enables businesses to assess and optimize current on-premises and cloud environments based on actual resources, utilization, and third-party licensing.

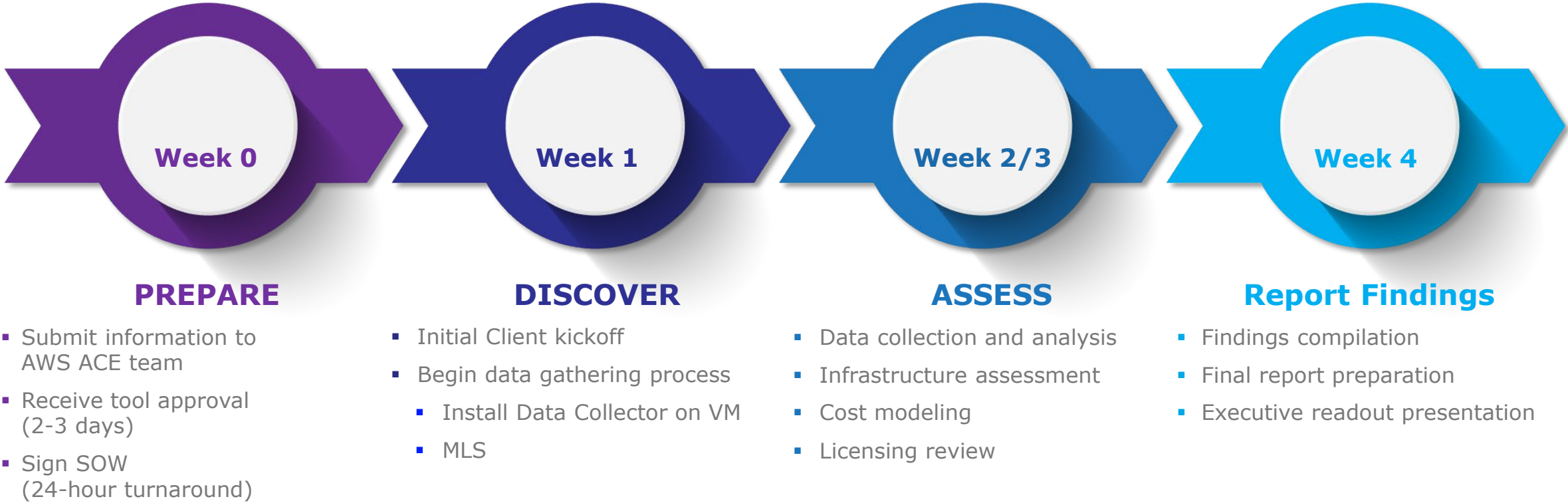
3x Average Savings

Third-party license costs vs. AWS cloud workload costs



Your Path to Clarity

A comprehensive assessment process with minimal disruption to your team





Christopher Belford | Senior Executive

christopher.belford@epiuse.com